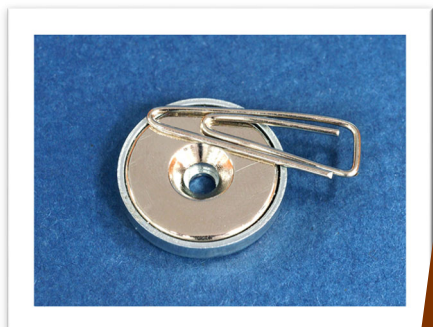


# 脚垫

PLASTIC FOOT



# 磁铁脚垫

MAGNET PLASTIC FOOT



# 橡胶脚垫

RUBBER FOOT



# 金框脚垫/银框脚垫

GOLD / SILVER COVERING FOOT

## 电子电脑塑胶五金零件

PLASTIC HARDWARE & ELECTRONIC COMPONENTS

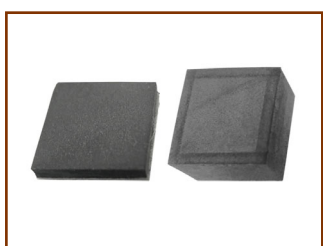
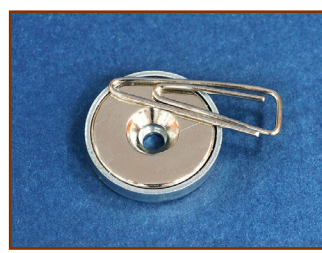
2023 EDITON

仪表脚垫 插销式脚垫 螺丝固定脚垫 脚垫 抗震脚垫 磁铁脚垫 橡胶脚垫 自粘脚垫 银框脚垫 金框脚垫 橡胶垫圈 橡胶华司 橡胶垫片 硅胶脚垫



仪表脚垫 插销式脚垫 螺丝固定脚垫 脚垫 抗震脚垫 磁铁脚垫 橡胶脚垫 自粘脚垫 银框脚垫 金框脚垫 橡胶垫圈 橡胶华司 橡胶垫片 硅胶脚垫

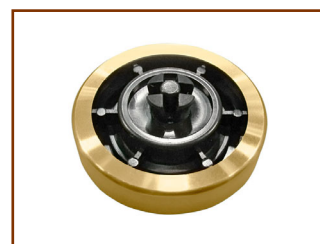
仪表脚垫



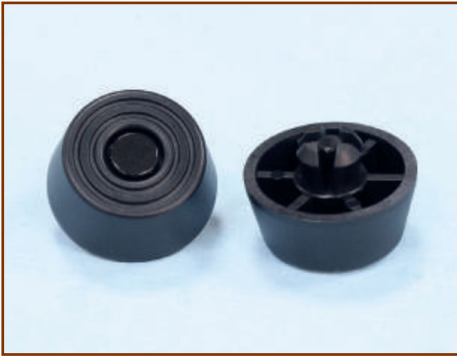
仪表脚垫 插销式脚垫 螺丝固定脚垫 脚垫 抗震脚垫 磁铁脚垫 橡胶脚垫 自粘脚垫 银框脚垫 金框脚垫 橡胶垫圈 橡胶华司 橡胶垫片 硅胶脚垫



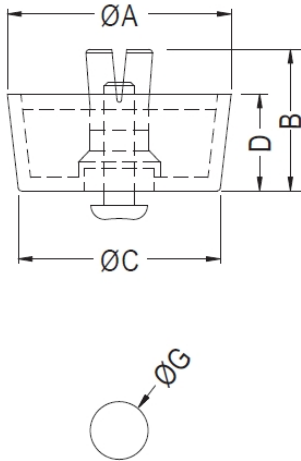
仪表脚垫 插销式脚垫 螺丝固定脚垫 脚垫 抗震脚垫 磁铁脚垫 橡胶脚垫 自粘脚垫 银框脚垫 金  
框脚垫 橡胶垫圈 橡胶华司 橡胶垫片 硅胶脚垫



# 仪表脚垫 PLASTIC FOOT 插销式脚垫



- ◆ MATERIAL : PE/TPR/TPV (UL)      用途: 脚垫,插销式, 可快速将脚垫固定于机壳, 不脱落。
- ◆ FLAME CLASS : 94HB
- ◆ PIN MATERIAL : PP
- ◆ COLOR : BLACK/GRAY/COMPUTER
- ◆ UNIT: mm



MOUNTING HOLE  
CHASSIS THICKNESS: T

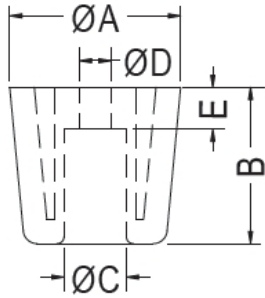
PART NO	A	B	C	D	G	T	PACKAGE
SFF-03	20.8	11.8	19.8	6.4	8.0	1.0~2.5	500
SFF-04	20.0	15.4	18.0	10.0	8.0	1.0~2.5	500
SFF-05	23.7	19.2	19.5	13.7	8.0	1.0~2.5	250
SFF-06	25.0	12.5	23.5	6.5	8.0	1.0~2.5	500
SFF-07	30.0	18.8	27.7	12.8	8.0	1.0~2.5	200
SFF-08	28.5	14.0	26.5	8.2	10.0	1.0~3.5	250
SFF-09	12.7	8.5	12.0	4.4	5.0	1.0~2.0	1000
SFF-10	15.7	8.5	15.0	4.4	5.0	1.0~2.0	1000
SFF-11	20.0	7.0	18.6	4.0	8.0	1.0~2.0	500
SFF-12	23.8	10.0	22.0	5.0	8.0	1.0~2.5	500
SFF-13	31.5	13.6	28.5	7.8	10.0	1.0~3.5	250
SFF-14	20.0	20.8	18.0	15.0	8.0	1.0~3.0	250
SFF-15	20.0	24.3	18.0	18.0	8.0	0.8~1.0	250
SFF-16	19.5	10.5	18.7	5.0	8.0	0.8~2.0	500
SFF-17	29.4	23.0	26.5	15.0	10.0	1.0~3.5	100
SFF-18	20.0	25.6	19.3	20.5	8.0	0.8~2.0	250
SFF-19	19.2	12.1	17.2	7.9	8.0	0.8~1.2	500
SFF-20	23.0	13.3	21.0	8.0	8.0	0.8~2.0	500
SFF-21	24.0	15.8	20.0	10.5	8.0	0.8~2.0	250
SFF-22	22.0	10.5	21.0	3.5	8.0	1.0~3.0	500
SFF-23	26.7	21.0	24.8	16.0	8.0	1.0~3.0	200
SFF-24	20.0	13.5	18.0	10.0	8.0	0.8~2.0	250
SFF-25	27.0	12.0	26.0	6.9	10.0	0.8~2.0	250
SFF-26	14.0	10.6	12.7	5.8	6.0	1.0~2.5	1000
SFF-27	22.0	10.5	20.0	3.5	8.0	1.0~3.0	500
SFF-28	20.8	12.6	19.8	7.2	8.0	1.0~2.5	500
SFF-29	12.0	10.0	10.5	5.8	5.0	1.0~2.5	1000
SFF-30	20.8	11.8	19.8	7.2	8.0	1.0~2.5	500
SFF-32	20.0	9.1	18.0	6.0	4.0	0.8	1000
SFF-33	20.0	8.4	18.0	5.2	5.0	0.8	1000
SFF-34	41.2	21.6	40.0	14.0	10.0	0.8~2.0	100
SFF-91	20.0	17.8	18.0	14.0	5.0	1.6	500
SFF-101	25.0	10.5	23.0	5.0	8.0	0.8~1.5	250

# 仪表脚垫 PLASTIC FOOT 插销式脚垫



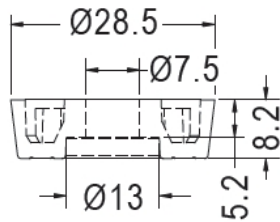
- ◆ MATERIAL : ABS/PP
- ◆ COLOR : BLACK
- ◆ UNIT: mm

用途：脚垫,机械外壳之座垫，使用螺丝固定，安全不脱落，耐重压。



PART NO	A	B	C	D	E	PACKAGE
SFF-51	15.0	8.0	7.5	3.7	3.5	1000
SFF-52	20.0	12.1	8.2	4.1	5.5	500
SFF-53	25.1	16.2	10.4	4.3	8.1	100
SFF-54	24.4	22.4	8.9	4.6	6.0	100
SFF-55	26.0	12.7	10.9	5.1	5.7	100
SFF-56	22.5	22.4	8.6	4.6	6.0	100
SFF-57	17.0	17.0	7.5	3.2	6.0	100
SFF-58	19.8	20.0	9.5	4.2	5.7	500
SFF-59	20.0	12.8	9.5	3.6	5.7	500
SFF-60	20.0	10.5	9.2	4.4	4.0	500
SFF-61	28.5	8.2	11.29	7.1	6.0	100

仪表脚垫



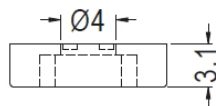
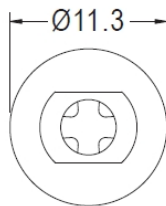
- ◆ MATERIAL : TPR
- ◆ COLOR : BLACK
- ◆ UNIT: mm

PART NO	PACKAGE
SFF-99	200

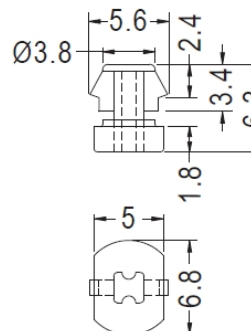


- ◆ MATERIAL : TPE
- ◆ PIN MATERIAL : NYLON 66(UL)
- ◆ FLAME CLASS : 94V-2
- ◆ COLOR : BLACK
- ◆ UNIT: mm

用途：脚垫,插销式，可快速将脚垫固定于机壳，不脱落，耐重压。



BODY



PIN

CHASSIS Ø4.0  
THICKNESS 0.8~1.0

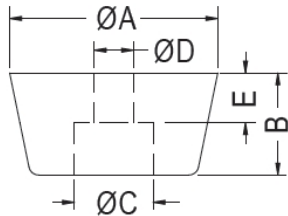
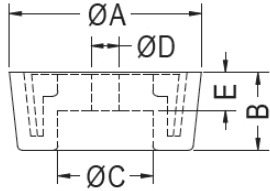
PART NO	PACKAGE
SFF-31	1000

# 仪表脚垫 PLASTIC FOOT 插销式脚垫



- ◆ MATERIAL : PE/PP/RUBBER/  
SILICON RUBBER
- ◆ COLOR : BLACK/WHITE
- ◆ UNIT: mm

用途: 脚垫,机械外壳之座垫, 使用螺丝固定, 安全不脱落, 耐重压。



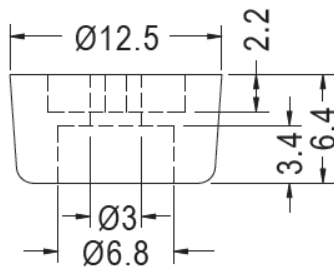
PART NO	A	B	C	D	E	MATERIAL	PACKAGE
SFF-63	14.8	7.0	6.0	3.0	3.1	PE	1000
SFF-67	20.2	8.0	10.0	3.0	4.0	PE	500
SFF-68	25.0	5.8	8.5	3.3	2.8	PE	500
SFF-69	20.0	10.5	9.5	3.0	5.0	PE	500
SFF-70	20.0	10.5	9.5	4.0	5.0	PE	1000
SFF-73	28.0	20.0	9.7	3.8	6.0	PE/PP	100

PART NO	A	B	C	D	E	MATERIAL	PACKAGE
SFF-64	11.5	7.4	5.6	3.2	3.3	RUBBER	1000
SFF-65	16.0	7.8	6.0	3.0	4.0	RUBBER	1000
SFF-66	17.2	7.0	9.0	4.0	3.0	RUBBER	1000
SFF-71	11.0	5.7	6.0	3.5	2.3	PE/PP	1000
SFF-72	18.0	9.8	7.8	3.5	2.7	PP	1000
SFF-74	28.0	25.0	9.7	4.2	6.0	RUBBER	100
SFF-76	20.2	15.0	9.4	3.5	4.0	RUBBER	100
SFF-77	22.0	14.0	9.5	4.0	6.5	RUBBER	100
SFF-102	25.0	5.8	8.5	3.3	3.0	SILICON RUBBER	500



- ◆ MATERIAL : TPE
- ◆ COLOR : BLACK
- ◆ UNIT: mm

用途: 脚垫,可快速将脚垫固定于机壳, 不脱落, 耐重压。



PART NO	PACKAGE
SFF-35	1000

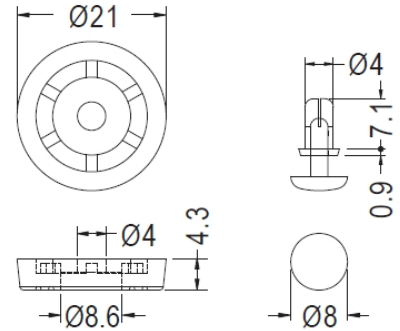


# 仪表脚垫 PLASTIC FOOT 插销式脚垫



- ◆ MATERIAL : TPE
- ◆ PIN MATERIAL : NYLON 66 (UL)
- ◆ FLAME CLASS : 94V-2
- ◆ COLOR : BLACK
- ◆ UNIT: mm

用途：脚垫,插销式,可快速将脚垫固定于机壳,不脱落,耐重压。



BODY

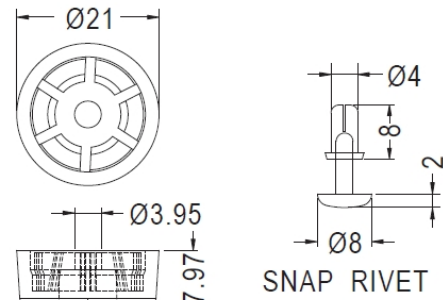
SNAP RIVET

PART NO	PACKAGE
SFF-92	1000



- ◆ MATERIAL : TPR
- ◆ PIN MATERIAL : NYLON 66(UL)
- ◆ FLAME CLASS : 94V-2
- ◆ COLOR : BLACK
- ◆ UNIT: mm

用途：脚垫,插销式,可快速将脚垫固定于机壳,不脱落,可更换铆钉配合不同板厚。



FOOT

SNAP RIVET

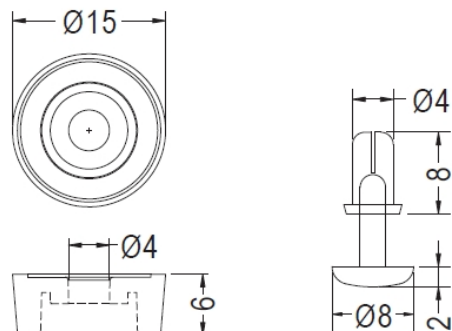
HOLE Ø4.1~Ø4.2  
THICKNESS 0.8~2.0

PART NO	PACKAGE
SFF-93	1000



- ◆ MATERIAL : TPV
- ◆ PIN MATERIAL : NYLON 66(UL)
- ◆ FLAME CLASS : 94V-2
- ◆ COLOR : BLACK
- ◆ UNIT: mm

用途：脚垫,插销式,可快速将脚垫固定于机壳,不脱落,可更换铆钉配合不同板厚。



FOOT

SNAP RIVET

MOUNTING HOLE Ø4.0

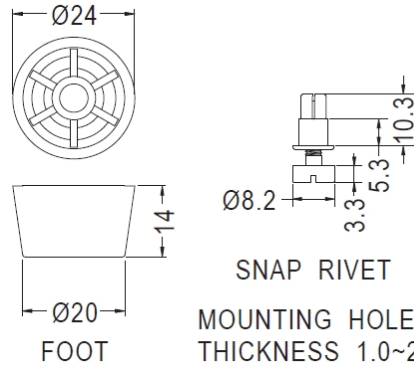
PART NO	PACKAGE
SFF-112	1000

## 仪表脚垫 PLASTIC FOOT 插销式脚垫



- ◆ MATERIAL : TPE
- ◆ PIN MATERIAL : NYLON 66 (UL)
- ◆ FLAME CLASS : 94V-2/94V-0
- ◆ COLOR : BLACK
- ◆ UNIT: mm

用途：脚垫，插销式，可快速将脚垫固定于机壳，不脱落，可更换铆钉配合不同板厚。



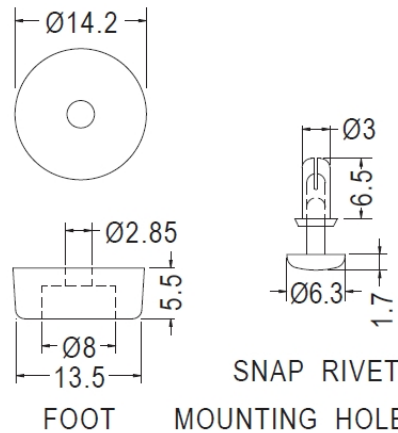
PART NO	PACKAGE
SFF-90	1000

SNAP RIVET  
MOUNTING HOLE  $\varnothing 5.0$   
THICKNESS 1.0~2.3



- ◆ MATERIAL : TPE
- ◆ PIN MATERIAL : NYLON 66(UL)
- ◆ FLAME CLASS : 94V-2/94V-0
- ◆ COLOR : BLACK
- ◆ UNIT: mm

用途：脚垫，插销式，可快速将脚垫固定于机壳，不脱落，可更换铆钉配合不同板厚。



PART NO	PACKAGE
SFF-103	1000

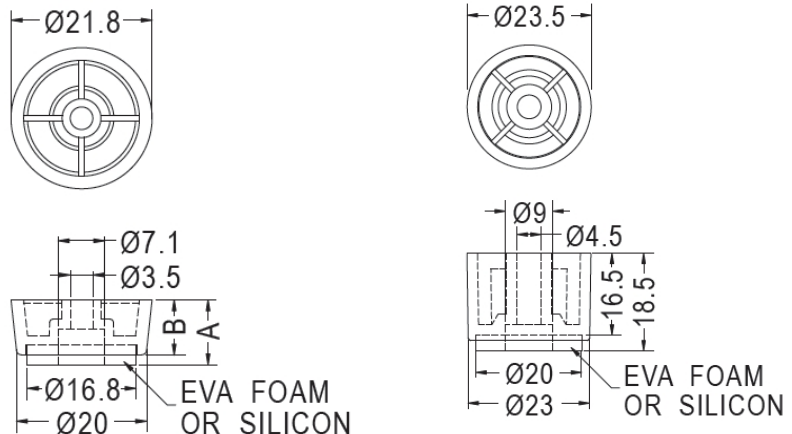
SNAP RIVET  
MOUNTING HOLE  $\varnothing 3.0$

## 仪表脚垫 PLASTIC FOOT 螺丝式脚垫



- ◆ MATERIAL : ABS
- ◆ COLOR : BLACK
- ◆ UNIT: mm

用途：脚垫，螺丝式，将脚垫固定于机壳，下有泡棉或硅胶，防滑性佳。



PART NO	A	B	PACKAGE
SFF-49	10.0	8.5	500
SFF-50	15.0	13.5	500

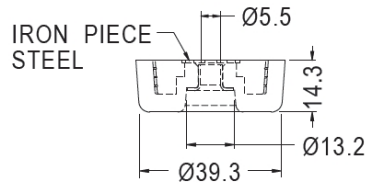
PART NO	PACKAGE
SFF-94	1000

# 仪表脚垫 PLASTIC FOOT 螺丝固定脚垫



- ◆ MATERIAL : TPR
- ◆ COLOR : BLACK
- ◆ UNIT: mm

用途: 脚垫,机械外壳之座垫, 使用螺丝固定, 安全不脱落, 耐重压。

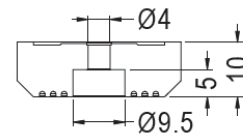
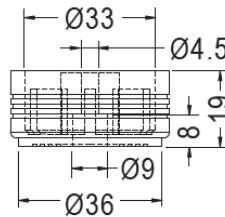
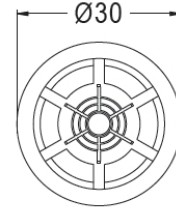
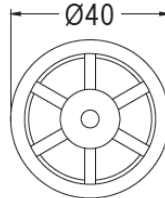


PART NO	PACKAGE
SFF-84	50



- ◆ MATERIAL : TPR
- ◆ COLOR : BLACK
- ◆ UNIT: mm

用途: 脚垫, 机械外壳之座垫, 使用螺丝固定, 安全不脱落, 耐重压。



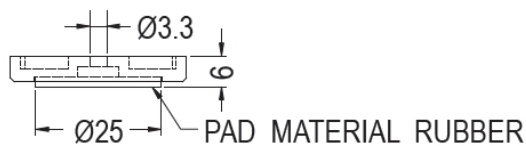
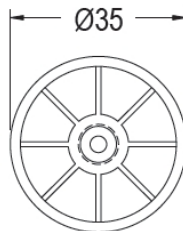
PART NO	PACKAGE
SFF-83	50

PART NO	PACKAGE
SFF-104	250



- ◆ HOUSING MATERIAL : ABS(UL)
- ◆ HOUSING FLAME CLASS : 94HB
- ◆ COLOR : BLACK
- ◆ UNIT: mm

用途: 脚垫, 用于音响、影碟机等之脚垫, 装配容易、美观。



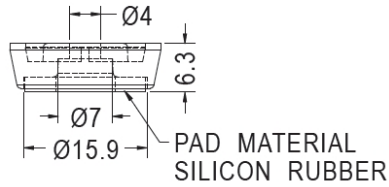
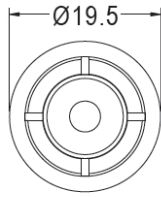
PART NO	PACKAGE
SFF-48	100

# 仪表脚垫 PLASTIC FOOT 螺丝固定脚垫

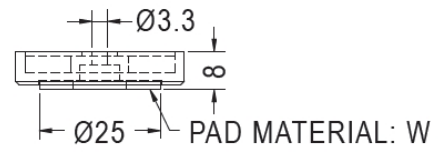
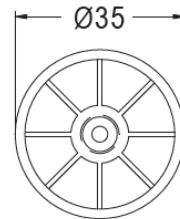
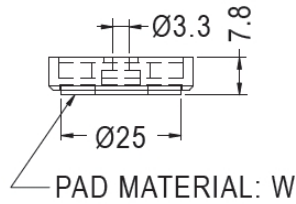
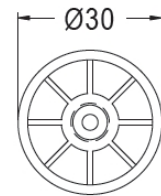


- ◆ MATERIAL : ABS
- ◆ COLOR : BLACK
- ◆ UNIT: mm

用途：脚垫，用于音响、影碟机等之脚垫，装配容易、美观。

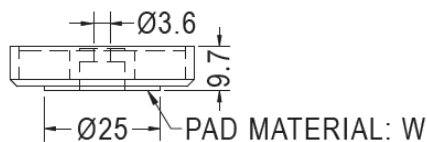
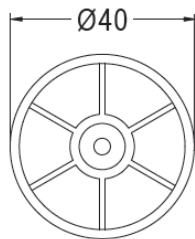


PART NO	PACKAGE
SFF-100	100



PART NO	W	PACKAGE
SFF-38	EVA	100
SFF-39	PORON	100
SFF-40	RUBBER	100

PART NO	W	PACKAGE
SFF-44	EVA	100
SFF-45	PORON	100
SFF-46	RUBBER	100



PART NO	W	PACKAGE
SFF-41	EVA	100
SFF-42	PORON	100
SFF-43	RUBBER	100
SFF-47	PORON	100

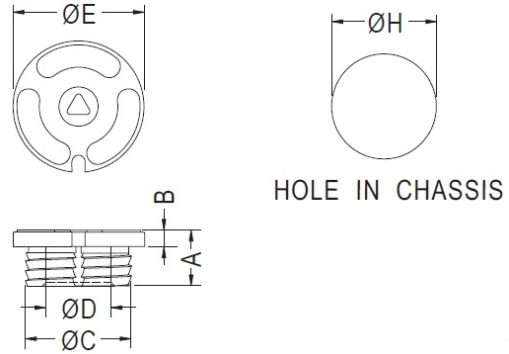
SFF-47 外部雾面处理

# 仪表脚垫 PLASTIC FOOT



- ◆ MATERIAL : TPR
- ◆ COLOR : BLACK
- ◆ UNIT: mm

用途：脚垫,固定于机壳，保护用。



HOLE IN CHASSIS

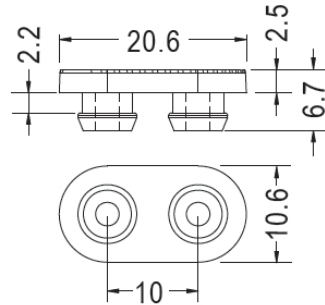
PART NO	A	B	C	D	E	H	PACKAGE
SFF-78	9.0	3.0	16.3	10.0	20.0	16.0	1000
SFF-79	8.5	2.5	16.3	10.0	20.0	16.0	1000
SFF-80	7.5	2.5	16.3	10.0	20.0	16.0	1000
SFF-81	9.0	2.4	20.2	13.5	22.8	19.8	1000

仪表脚垫



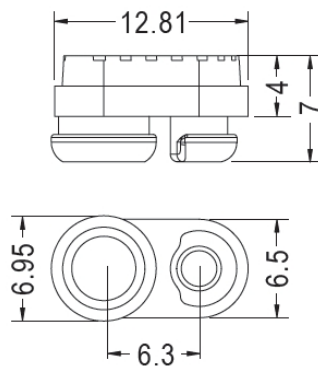
- ◆ MATERIAL : TPR
- ◆ COLOR : BLACK
- ◆ UNIT: mm

用途：脚垫，可快速将脚垫固定于机壳，装配容易，不脱落。

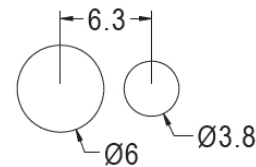


MOUNTING HOLE Ø5.6  
THICKNESS 2.0

PART NO	PACKAGE
SFF-86	1000



MOUNTING HOLE Ø5.6  
CHASSIS THICKNESS 1.0~1.2



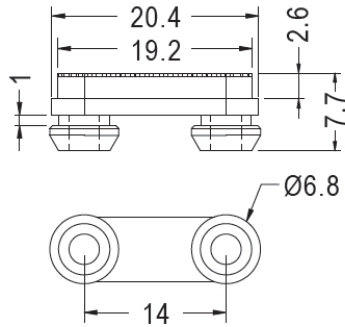
PART NO	PACKAGE
SFF-87	1000

# 仪表脚垫 PLASTIC FOOT



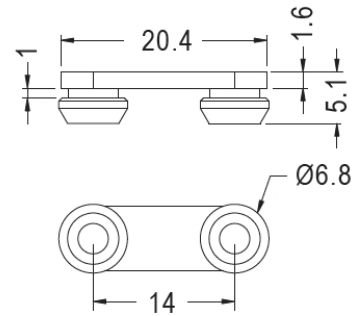
- ◆ MATERIAL : TPR
- ◆ COLOR : BLACK
- ◆ UNIT: mm

用途：脚垫，可快速将脚垫固定于机壳，装配容易，不脱落。



MOUNTING HOLE Ø5.0

PART NO	PACKAGE
SFF-88	1000



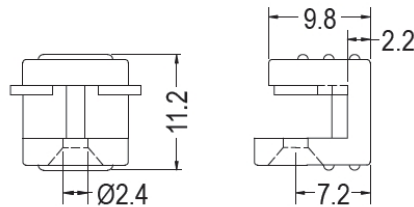
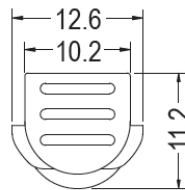
MOUNTING HOLE Ø5.0

PART NO	PACKAGE
SFF-89	1000



- ◆ MATERIAL : TPE
- ◆ COLOR : BLACK
- ◆ UNIT: mm

用途：脚垫，可快速将脚垫固定于机壳，装配容易，不脱落。

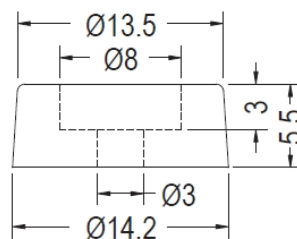


PART NO	PACKAGE
ZNP328	1000



- ◆ MATERIAL : TPE
- ◆ COLOR : BLACK
- ◆ UNIT: mm

用途：脚垫，机械外壳之座垫，使用螺丝固定，安全不脱落，耐重压。



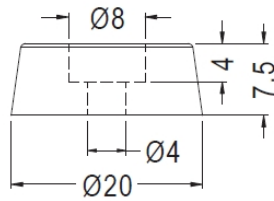
PART NO	PACKAGE
SFF-82	1000

# 仪表脚垫 PLASTIC FOOT



- ◆ MATERIAL : RUBBER
- ◆ COLOR : BLACK
- ◆ UNIT: mm

用途：脚垫，机械外壳之座垫，使用螺丝固定，安全不脱落，耐重压。

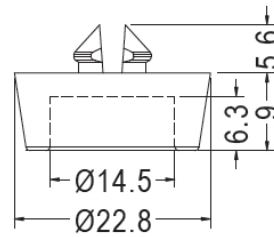


PART NO	PACKAGE
SFF-130	1000



- ◆ MATERIAL : PE
- ◆ COLOR : BLACK
- ◆ UNIT: mm

用途：脚垫，用于机壳之座垫，装配容易，安全不脱落。



MOUNTING HOLE Ø8.0

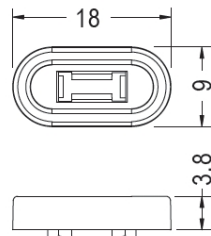
PART NO	PACKAGE
SFF-62	500

仪表脚垫

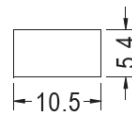


- ◆ MATERIAL : ABS(UL) 94HB/TPR
- ◆ COLOR : BLACK/WHITE
- ◆ UNIT: mm

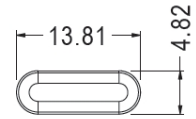
用途：脚垫，插销式，计算机外壳之座垫，使用插销固定，安全不脱落。



BODY



MOUNTING HOLE THICKNESS 0.8



PIN

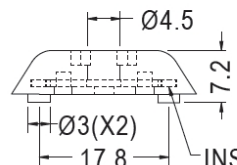
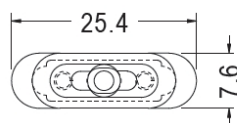
PART NO	PACKAGE
SFF-01	1000

PART NO	PACKAGE
SFF-02	1000



- ◆ MATERIAL : TPR
- ◆ METAL RING MATERIAL : SPCC
- ◆ COLOR : GRAY
- ◆ UNIT: mm

用途：脚垫，机械外壳之座垫，内含铁件，使用螺丝固定，安全不脱落，耐重压。



INSERT IRON PIECE

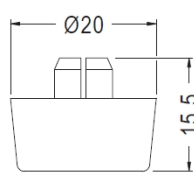
PART NO	PACKAGE
SFF-85	1000

# 仪表脚垫 PLASTIC FOOT 插销式

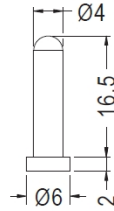


- ◆ MATERIAL : TPV
- ◆ PIN MATERIAL : PP
- ◆ COLOR : BLACK
- ◆ UNIT: mm

用途: 脚垫, 插销式, 可快速将脚垫固定于机壳, 不脱落。

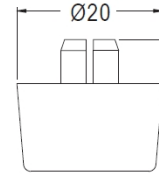


BODY

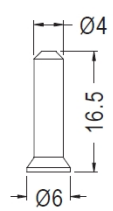


PIN

MOUNTING HOLE Ø8.0~Ø8.1  
PANEL THICKNESS 0.8~1.5



BODY



PIN

MOUNTING HOLE Ø8.0~Ø8.1  
PANEL THICKNESS 0.5~1.2

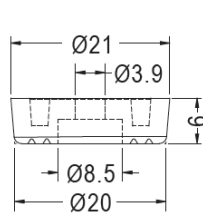
PART NO	PACKAGE
SFF-107	1000

PART NO	PACKAGE
SFF-108	1000

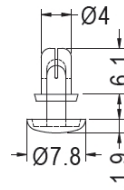


- ◆ FOOT MATERIAL : TPV(UL)
- ◆ RIVET MATERIAL : NYLON 66(UL)
- ◆ FLAME CLASS : 94HB/94V-0/94V-2
- ◆ COLOR : BLACK
- ◆ UNIT: mm

用途: 脚垫, 插销式, 可快速将脚垫固定于机壳, 不脱落, 可更换铆钉配合不同板厚。



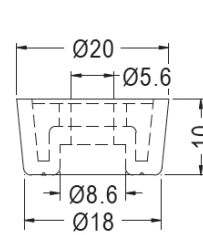
FOOT



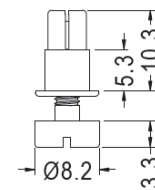
SNAP RIVET

MOUNTING HOLE Ø4.1~Ø4.2  
THICKNESS 0.8~1.8

PART NO	PACKAGE
SFF-109	1000



FOOT



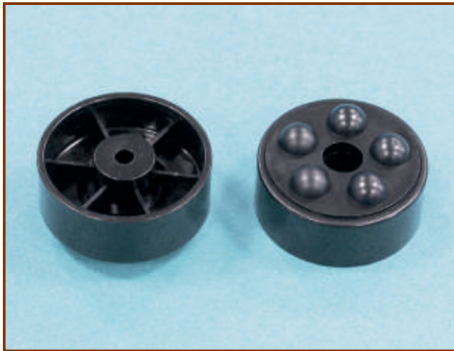
SNAP RIVET

MOUNTING HOLE Ø5.0  
THICKNESS 1.0~2.3

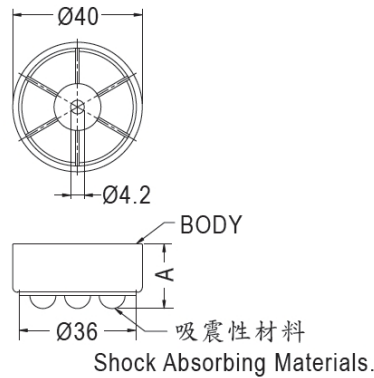
PART NO	PACKAGE
SFF-110	1000



## 抗震脚垫 ANTI-VIBRATION FOOT 防震脚垫



- ◆ BODY MATERIAL : ABS
- ◆ PAD MATERIAL : TPE
- ◆ COLOR : BLACK
- ◆ UNIT: mm



用途：抗震脚垫，也称防震脚垫，特殊吸震材料，用于需抗震之重低音音响、影碟机等之防震脚垫，装配容易、美观、防震性佳。

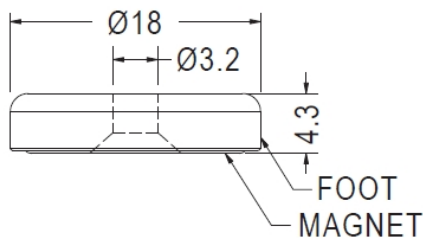
PART NO	A	PACKAGE
SFFQ-1	20.0	500
SFFQ-2	12.0	500

## 磁铁脚垫 MAGNET PLASTIC FOOT

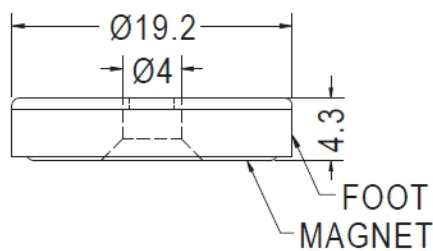
仪表脚垫



- ◆ FOOT MATERIAL : NYLON 66(UL)
  - ◆ MAGNET MATERIAL : NDFEB
  - ◆ FLAME CLASS: BLACK/NATURAL
  - ◆ COLOR : BLACK/NATURAL
  - ◆ UNIT: mm
- 用途：脚垫，磁铁脚垫，可将HUB吸着于铁板上。



PART NO	PACKAGE
CMGF02	1000



- Foot Material: Steel

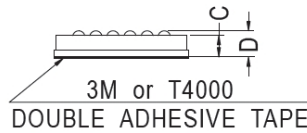
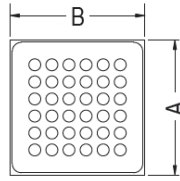
PART NO	PACKAGE
CMGF03	1000

# 橡胶脚垫 RUBBER FOOT 自粘脚垫



- ◆ MATERIAL : RUBBER
- ◆ COLOR : BLACK
- ◆ UNIT: mm

用途：橡胶脚垫，背胶式自粘脚垫，可快速将脚垫固定于机壳，粘性佳、不脱落。



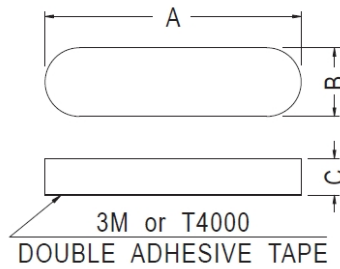
PART NO	A	B	C	D
ZNP001	14.0	13.5	2.1	2.6
ZNP002	15.0	14.5	2.6	3.1



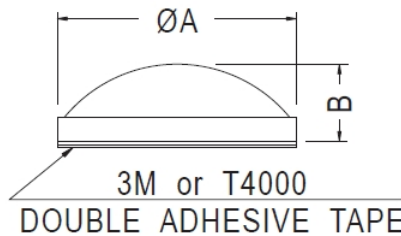
- ◆ MATERIAL : RUBBER/ SILICON RUBBER
- ◆ OTHER MATERIALS AVAILABLE : EPDM
- ◆ COLOR : BLACK
- ◆ UNIT: mm

PART NO	A	B	C
ZNP003	26.8	7.2	3.8
ZNP004	20.5	6.2	1.2
ZNP005	8.0	2.0	1.0
ZNP006	10.5	6.0	1.2
ZNP007	10.5	6.0	1.4
ZNP008	16.0	9.5	1.5
ZNP009	20.5	6.2	1.7
ZNP010	26.8	7.2	2.0
ZNP011	36.0	7.0	1.2
ZNP012	69.6	9.8	2.0
ZNP013	17.5	6.5	2.0
ZNP322	15.8	9.3	2.0
ZNP366	15.2	9.2	3.0
ZNP367	24.0	9.0	2.0

尺寸可依客户要求。  
Different size available per request.



橡胶脚垫



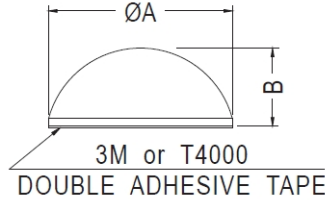
PART NO	A	B
ZNP014	10.0	2.8
ZNP015	8.0	2.0
ZNP016	21.6	11.0
ZNP017	8.0	2.6
ZNP362	8.0	3.0
ZNP363	8.8	2.89

# 橡胶脚垫 RUBBER FOOT 自粘脚垫



- ◆ MATERIAL : RUBBER/ SILICON RUBBER
- ◆ OTHER MATERIALS AVAILABLE : EPDM
- ◆ COLOR : BLACK
- ◆ UNIT: mm

用途：橡胶脚垫，背胶式自粘脚垫，可快速将脚垫固定于机壳，粘性佳、不脱落。



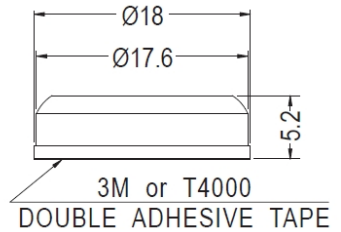
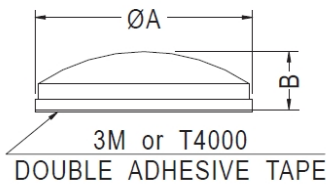
PART NO	A	B
ZNP024	6.7	4.2
ZNP025	15.9	8.0
ZNP026	14.0	8.0
ZNP027	21.6	8.52
ZNP028	21.6	10.0
ZNP029	11.3	5.6
ZNP030	11.0	6.0
ZNP319	9.5	3.9
ZNP320	7.8	2.9

橡胶脚垫



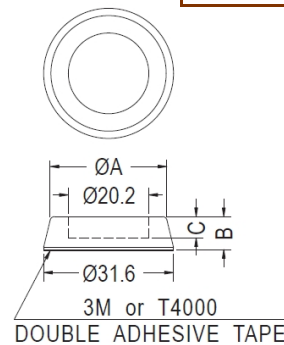
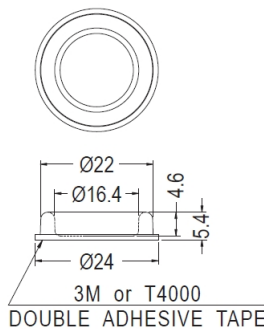
- ◆ MATERIAL : RUBBER
- ◆ COLOR : BLACK
- ◆ UNIT: mm

用途：橡胶脚垫，背胶式自粘脚垫，可快速将脚垫固定于机壳，粘性佳、不脱落。



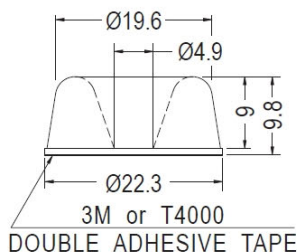
PART NO	A	B
ZNP018	9.9	3.8
ZNP019	14.0	5.0
ZNP020	27.8	7.441

PART NO
ZNP034

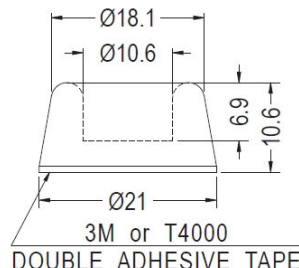


PART NO
ZNP031

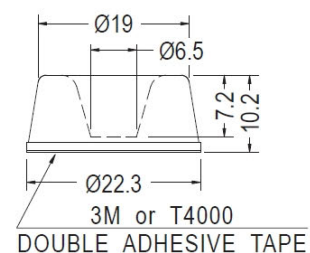
PART NO	A	B	C
ZNP032	29.6	6.6	4.1
ZNP033	29.0	8.8	4.9



PART NO
ZNP021



PART NO
ZNP022



PART NO
ZNP023

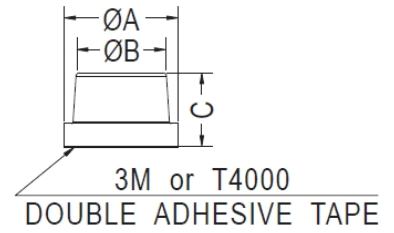
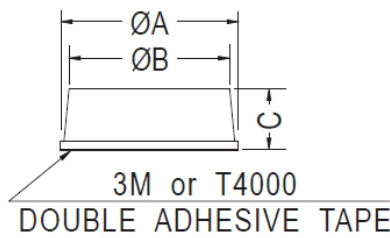
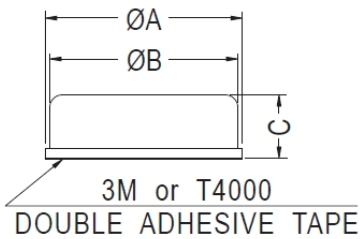
# 橡胶脚垫 RUBBER FOOT 自粘脚垫



用途：橡胶脚垫，背胶式自粘脚垫，可快速将脚垫固定于机壳，粘性佳、不脱落。

- ◆ MATERIAL : RUBBER/ SILICON RUBBER
- ◆ OTHER MATERIALS AVAILABLE : EPDM
- ◆ COLOR : BLACK
- ◆ UNIT: mm

- ◆ MATERIAL : RUBBER
- ◆ SILICON RUBBER
- ◆ COLOR : BLACK
- ◆ UNIT: mm



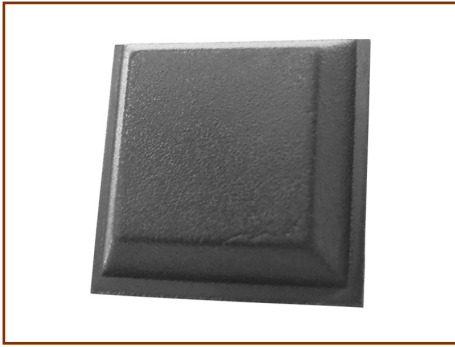
PART NO	A	B	C
ZNP035	9.0	8.2	3.5
ZNP036	8.0	7.7	3.5
ZNP037	8.2	7.6	5.0
ZNP038	15.4	14.8	5.1
ZNP039	22.8	22.4	5.0
ZNP040	22.0	21.0	5.0
ZNP041	22.0	21.0	8.8
ZNP317	9.7	9.3	4.2
ZNP318	19.05	18.05	4.06
ZNP325	5.8	5.5	4.0

PART NO	A	B	C
SRF117	6.0	5.0	5.0
SRF118	10.0	9.5	4.2
SRF119	11.3	10.7	3.2
SRF120	11.0	9.6	5.0
SRF121	13.0	11.4	5.0
SRF122	19.8	18.0	5.0
SRF123	19.0	17.0	7.2
SRF124	20.0	19.0	6.0
SRF125	24.0	20.0	8.0
SRF126	10.8	10.2	3.0
SRF127	11.0	10.5	5.0
SRF128	12.0	11.2	5.1
SRF129	12.0	9.5	4.0
SRF130	12.7	10.0	3.8
SRF131	19.0	15.8	4.2
SRF132	12.0	11.6	2.7
SRF133	10.0	9.5	8.0
SRF134	12.7	11.5	4.0
SRF135	11.9	11.2	6.4
SRF136	7.0	6.6	3.2
SRF137	15.0	13.5	11.0
SRF138	10.0	9.0	9.4
SRF139	13.0	12.2	4.5
SRF173	10.0	9.7	5.5

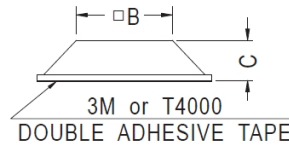
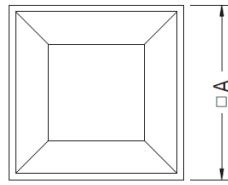
PART NO	A	B	C
ZNP326	17.0	13.25	11.0
SRF172	7.0	6.5	4.2
SRF174	12.7	10.0	6.2
SRF175	8.0	7.2	6.5

橡胶脚垫

# 方形橡胶脚垫 RUBBER FOOT 自粘脚垫

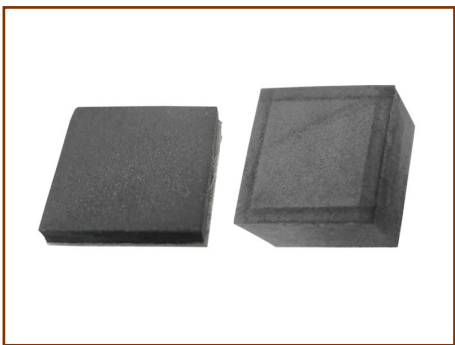


- ◆ MATERIAL : RUBBER/ SILICON RUBBER/PU
- ◆ COLOR : BLACK
- ◆ UNIT: mm



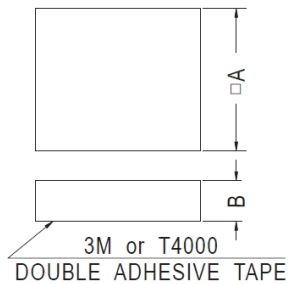
PART NO	A	B	C
ZNP042	12.7	9.0	3.5
ZNP043	12.7	7.0	6.0
ZNP045	20.0	14.0	7.6
ZNP046	10.5	8.6	2.5
ZNP047	12.5	9.5	4.0
ZNP048	12.7	9.8	3.0
ZNP049	12.5	9.7	3.5

用途：橡胶脚垫，背胶式自粘脚垫，可快速将脚垫固定于机壳，粘性佳、不脱落。



用途：方形橡胶脚垫，背胶式自粘脚垫，可快速将脚垫固定于机壳，粘性佳、不脱落。可依客户指定长、宽、高裁切成各种形状，如方形、圆形。表面可分为平面、斜纹等。

- ◆ MATERIAL : RUBBER/SILICON RUBBER
- ◆ COLOR : BLACK
- ◆ UNIT: mm
- ◆ OTHER MATERIAL AVAILABLE : EPDM,PORON...
- ◆ OPTIONAL THICKNESS : 0.7~5.0mm

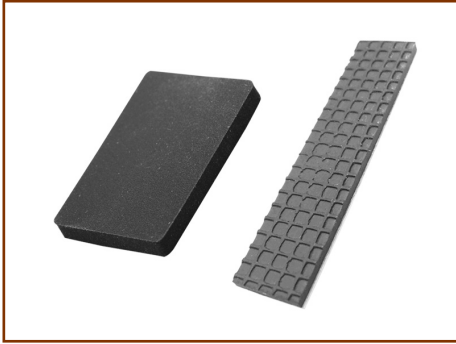


PART NO	A	B
ZNP050	5.0	1.0
ZNP057	6.0	2.5
ZNP058	6.0	6.0
ZNP059	7.0	1.5
ZNP060	7.0	2.0
ZNP061	7.0	4.0
ZNP062	7.0	5.5
ZNP063	7.0	8.0
ZNP064	8.0	2.3
ZNP065	9.0	4.5
ZNP066	10.0	0.7
ZNP067	10.0	0.9
ZNP068	10.0	1.0
ZNP069	10.0	1.6
ZNP070	10.0	2.0
ZNP071	10.0	2.3
ZNP072	10.0	2.5
ZNP073	10.0	3.0
ZNP074	10.0	3.5
ZNP075	10.0	4.0

PART NO	A	B
ZNP076	10.0	5.0
ZNP077	10.0	6.0
ZNP078	11.0	6.0
ZNP079	11.5	5.0
ZNP080	11.5	6.5
ZNP081	12.0	2.5
ZNP082	12.0	5.5
ZNP083	12.0	7.0
ZNP084	14.0	2.0
ZNP085	14.0	8.0
ZNP086	15.0	1.2
ZNP087	15.0	3.5
ZNP088	15.0	5.0
ZNP089	16.0	1.0
ZNP090	17.0	2.5
ZNP091	18.0	1.0
ZNP092	18.0	2.0
ZNP093	18.0	4.0
ZNP094	18.0	5.0
ZNP095	20.0	3.0

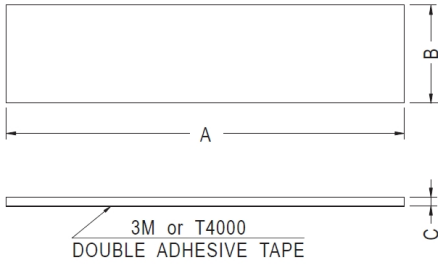
PART NO	A	B
ZNP096	25.4	5.0
ZNP097	40.0	1.0
ZNP098	40.0	5.0
ZNP099	50.0	5.0
ZNP100	6.4	3.0
ZNP101	9.7	2.0
ZNP102	12.0	5.0
ZNP103	6.0	4.0
ZNP104	12.7	2.3
ZNP105	6.0	1.0
ZNP106	6.0	1.5
ZNP107	5.0	1.2
ZNP108	8.0	1.0
ZNP109	8.0	2.0
ZNP110	12.0	1.2
ZNP111	13.0	2.0
ZNP112	15.0	1.5
ZNP113	8.0	2.5
ZNP114	9.7	3.5
ZNP324	6.0	5.0
ZNP359	7.3	2.0

# 橡胶脚垫 RUBBER FOOT 自粘脚垫



用途：橡胶脚垫，背胶式自粘脚垫，可快速将脚垫固定于机壳，粘性佳、不脱落。可依客户指定长、宽、高裁切成各种形状，如方形、圆形。表面可分为平面、斜纹等。

- ◆ MATERIAL : RUBBER/SILICON RUBBER
- ◆ COLOR : BLACK
- ◆ UNIT: mm
- ◆ OTHER MATERIAL AVAILABLE : EPDM,PORON...
- ◆ OPTIONAL THICKNESS : 0.5~10mm

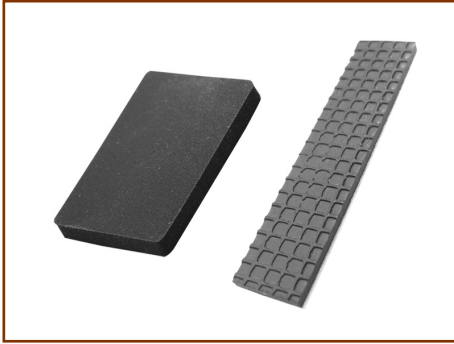


PART NO	A	B	C
ZNP051	5.0	4.5	3.5
ZNP115	6.0	2.3	1.3
ZNP116	6.0	4.0	2.5
ZNP117	6.5	2.8	4.0
ZNP118	6.5	2.8	5.0
ZNP119	7.0	2.0	1.5
ZNP120	7.0	2.0	1.6
ZNP121	7.0	3.0	0.4
ZNP122	7.0	3.5	1.2
ZNP123	7.0	4.0	2.0
ZNP124	7.0	6.0	2.0
ZNP125	8.0	6.0	2.5
ZNP126	8.5	2.5	3.0
ZNP127	8.5	3.5	2.0
ZNP128	8.5	3.5	2.5
ZNP129	8.0	4.5	2.0
ZNP130	9.6	8.0	5.5
ZNP131	9.9	6.0	1.6
ZNP132	10.0	1.9	1.9
ZNP133	10.0	3.5	1.2
ZNP134	10.0	4.0	0.9
ZNP135	10.0	5.0	1.0
ZNP136	10.0	5.0	2.0
ZNP137	10.0	7.0	1.2
ZNP138	10.0	8.0	2.5
ZNP139	10.0	8.0	5.0

PART NO	A	B	C
ZNP140	10.5	7.2	3.0
ZNP141	11.5	8.0	3.0
ZNP142	11.8	7.8	1.0
ZNP143	12.0	5.0	6.5
ZNP144	12.0	8.5	1.0
ZNP145	12.0	9.5	1.5
ZNP146	12.0	15.0	3.0
ZNP147	12.5	6.5	3.5
ZNP148	12.5	10.0	0.8
ZNP149	13.0	6.0	2.0
ZNP150	13.0	6.0	3.0
ZNP151	13.0	7.0	3.5
ZNP152	13.0	7.0	4.0
ZNP153	13.5	8.0	5.5
ZNP154	13.0	2.5	2.5
ZNP155	14.0	4.0	3.0
ZNP156	14.0	4.0	4.0
ZNP157	15.0	3.2	2.0
ZNP158	15.0	6.0	1.0
ZNP159	15.0	10.0	1.6
ZNP160	15.0	1.9	3.0
ZNP161	15.0	25.0	3.0
ZNP162	15.0	50.0	3.0
ZNP163	15.8	5.6	1.0
ZNP164	15.8	10.0	2.5
ZNP165	16.0	5.0	3.6
ZNP166	17.0	5.0	2.5
ZNP167	17.2	4.3	3.0
ZNP168	18.0	9.0	3.0
ZNP169	18.0	10.0	1.0
ZNP170	18.0	10.0	2.0

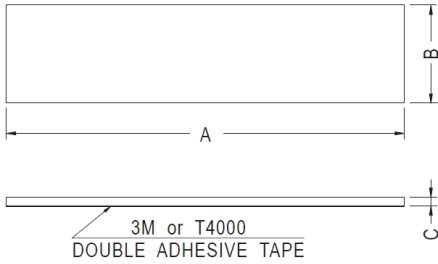
PART NO	A	B	C
ZNP171	19.0	5.6	4.0
ZNP172	19.0	5.7	2.0
ZNP173	19.7	7.7	6.0
ZNP174	19.7	8.0	1.4
ZNP175	19.7	8.0	1.5
ZNP176	19.7	9.7	2.5
ZNP177	19.7	9.7	3.0
ZNP178	20.0	2.5	1.5
ZNP179	20.0	4.0	1.0
ZNP180	20.0	4.0	2.0
ZNP181	20.0	5.0	1.0
ZNP182	20.0	5.0	1.5
ZNP183	20.0	5.0	6.3
ZNP184	20.0	5.0	6.8
ZNP185	20.0	7.0	2.5
ZNP186	20.0	10.0	1.0
ZNP187	20.0	10.0	1.5
ZNP188	20.0	10.0	2.0
ZNP189	20.0	10.0	3.5
ZNP190	20.0	10.0	5.6
ZNP191	20.0	14.0	6.5
ZNP192	20.0	15.0	1.5
ZNP193	20.5	6.0	1.2
ZNP194	21.5	8.6	0.4
ZNP195	22.6	7.6	4.0
ZNP196	23.0	7.6	4.0
ZNP197	23.7	6.5	1.0
ZNP198	24.8	6.0	1.1
ZNP199	25.0	5.0	3.5
ZNP200	25.0	5.0	5.0
ZNP201	25.0	7.0	6.0

# 橡胶脚垫 RUBBER FOOT 自粘脚垫



用途：橡胶脚垫，背胶式自粘脚垫，可快速将脚垫固定于机壳，粘性佳、不脱落。可依客户指定长、宽、高裁切成各种形状，如方形、圆形。表面可分为平面、斜纹等。

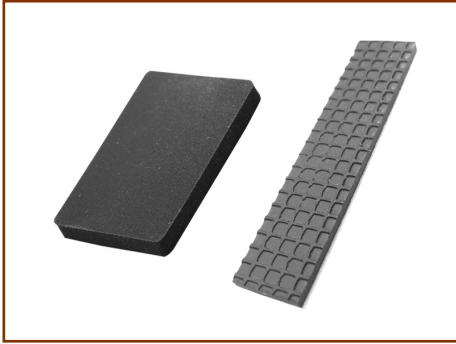
- ◆ MATERIAL : RUBBER/SILICON RUBBER
- ◆ COLOR : BLACK
- ◆ UNIT: mm
- ◆ OTHER MATERIAL AVAILABLE : EPDM,PORON...
- ◆ OPTIONAL THICKNESS : 0.5~10mm



PART NO	A	B	C
ZNP228	33.3	23.3	8.5
ZNP229	33.5	11.5	2.5
ZNP230	30.0	6.0	4.0
ZNP231	16.0	3.5	3.0
ZNP232	19.7	7.7	4.0
ZNP233	22.0	16.0	1.5
ZNP234	30.0	11.0	2.0
ZNP235	30.0	11.0	4.0
ZNP236	12.5	10.0	1.5
ZNP237	19.7	20.0	1.5
ZNP238	19.7	9.7	2.3
ZNP321	27.0	18.0	3.0
ZNP357	19.7	9.7	3.0
ZNP358	30.0	7.0	0.9
ZNP364	12.5	10.0	1.5
ZNP365	16.0	3.5	3.0
ZNP055	34.0	2.0	2.0
ZNP239	34.6	9.5	0.4
ZNP240	35.0	10.0	1.0
ZNP241	35.0	15.0	8.0
ZNP242	35.0	25.0	0.8
ZNP243	36.0	18.0	1.0
ZNP244	36.0	18.0	2.0
ZNP245	39.5	5.0	0.9
ZNP246	40.0	9.0	2.4
ZNP247	40.0	9.0	3.0
ZNP248	40.0	10.5	4.0
ZNP249	40.0	12.0	3.5
ZNP250	40.0	12.0	4.0
ZNP251	40.0	12.0	5.0
ZNP252	40.0	17.5	1.5

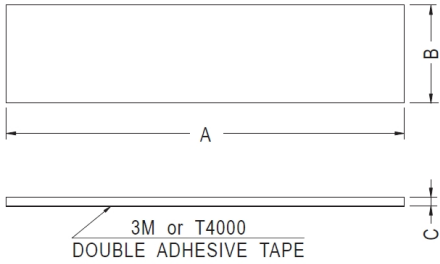
PART NO	A	B	C
ZNP253	44.5	20.0	10.0
ZNP254	45.0	10.0	2.0
ZNP255	47.5	3.5	3.0
ZNP256	48.0	10.0	4.0
ZNP257	48.0	44.0	1.0
ZNP258	49.0	12.0	1.0
ZNP259	50.0	6.0	2.0
ZNP260	50.0	10.0	3.8
ZNP261	54.0	10.0	1.0
ZNP262	55.0	5.0	1.5
ZNP263	58.0	25.0	0.8
ZNP264	58.0	25.0	1.4
ZNP265	58.0	25.0	1.6
ZNP266	60.0	6.0	1.0
ZNP267	60.0	6.0	1.3
ZNP268	60.0	6.0	2.5
ZNP269	60.0	9.0	0.7
ZNP270	60.0	10.0	1.0
ZNP271	60.0	10.0	2.5
ZNP272	60.0	17.5	3.0
ZNP273	60.0	20.0	10.0
ZNP274	65.0	20.0	2.0
ZNP275	65.0	40.0	3.0
ZNP276	70.0	5.0	2.5
ZNP277	70.0	18.0	2.0
ZNP278	70.0	20.0	1.0
ZNP279	76.0	10.0	0.5
ZNP280	84.6	52.6	0.8
ZNP281	88.0	8.0	1.0
ZNP282	95.0	12.0	3.2
ZNP283	98.0	8.0	3.0

# 橡胶脚垫 RUBBER FOOT 自粘脚垫



用途：橡胶脚垫，背胶式自粘脚垫，可快速将脚垫固定于机壳，粘性佳、不脱落。可依客户指定长、宽、高裁切成各种形状，如方形、圆形。表面可分为平面、斜纹等。

- ◆ MATERIAL : RUBBER/SILICON RUBBER
- ◆ COLOR : BLACK
- ◆ UNIT: mm
- ◆ OTHER MATERIAL AVAILABLE : EPDM,PORON...
- ◆ OPTIONAL THICKNESS : 0.5~10mm

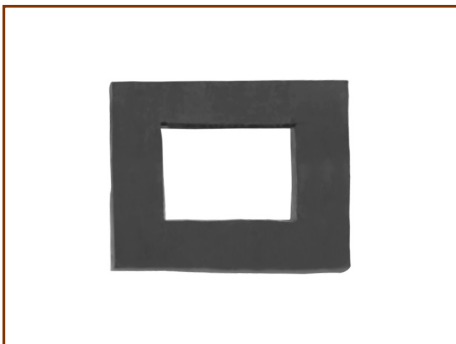


PART NO	A	B	C
ZNP300	150.0	7.0	1.2
ZNP301	150.0	15.0	1.5
ZNP302	160.0	6.0	1.0
ZNP303	166.5	49.0	3.0
ZNP304	250.0	5.0	1.5
ZNP305	250.0	65.0	2.0
ZNP306	270.0	165.0	0.5
ZNP307	258.0	14.5	2.0
ZNP308	310.0	116.6	5.0
ZNP309	310.0	12.0	5.0

PART NO	A	B	C
ZNP284	99.0	3.5	5.5
ZNP285	99.0	9.9	1.5
ZNP286	107.0	58.0	1.5
ZNP287	110.0	5.6	4.0
ZNP288	110.0	10.0	1.0
ZNP289	111.0	10.0	0.9
ZNP290	120.0	3.0	1.0
ZNP291	125.0	46.0	2.0
ZNP292	130.0	20.0	3.0
ZNP293	130.0	20.0	2.0
ZNP294	134.0	2.0	2.0
ZNP295	140.0	5.0	2.0
ZNP296	140.0	10.0	1.0
ZNP297	140.0	25.0	1.0
ZNP298	145.0	105.0	2.0
ZNP299	146.0	10.0	1.0

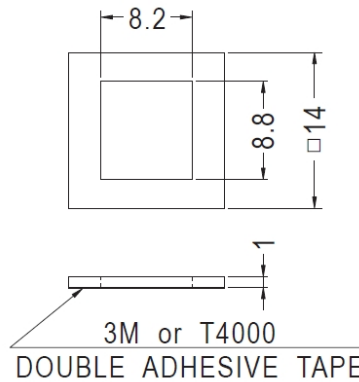
PART NO	A	B	C
ZNP310	540.0	2.9	0.8
ZNP311	100.0	12.0	3.5
ZNP312	40.0	9.0	1.5
ZNP313	60.0	6.0	4.0
ZNP314	34.7	9.7	1.0
ZNP315	80.0	10.0	0.5
ZNP316	150.0	10.0	0.5
ZNP323	60.0	6.7	6.7

橡胶脚垫



- ◆ MATERIAL : RUBBER
- ◆ COLOR : BLACK
- ◆ UNIT: mm

用途：橡胶脚垫，背胶式自粘脚垫，可快速将脚垫固定于机壳，粘性佳、不脱落。



PART NO
ZNP052

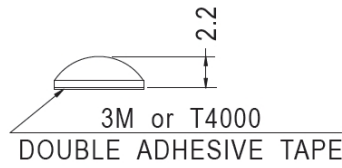
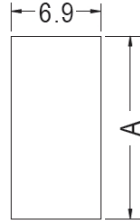


# 橡胶脚垫 RUBBER FOOT 自粘脚垫



用途：橡胶脚垫，背胶式自粘脚垫，可快速将脚垫固定于机壳，粘性佳、不脱落。尺寸可依客户要求。

- ◆ MATERIAL : RUBBER/SILICON RUBBER
- ◆ COLOR : BLACK
- ◆ UNIT: mm
- ◆ OTHER MATERIAL AVAILABLE : EPDM



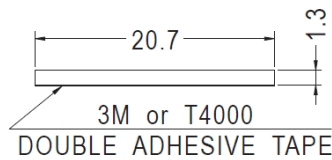
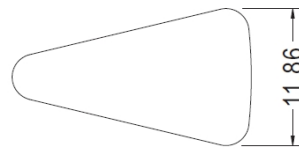
PART NO	A
ZNP053	14.0
ZNP054	27.8

## 橡胶脚垫

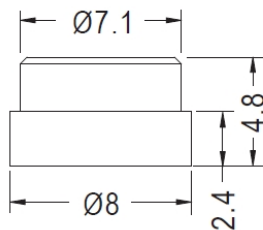


- ◆ MATERIAL : RUBBER
- ◆ COLOR : BLACK
- ◆ UNIT: mm

用途：橡胶脚垫，背胶式自粘脚垫，可快速将脚垫固定于机壳，粘性佳、不脱落。



PART NO	PACKAGE
ZNP056	1000



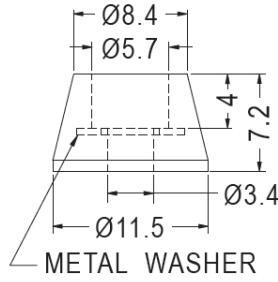
MOUNTING HOLE Ø7.0

PART NO	PACKAGE
ZNP327	1000

# 橡胶脚垫 RUBBER FOOT

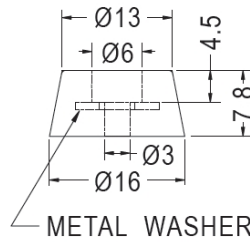


- ◆ MATERIAL : RUBBER
- ◆ COLOR : BLACK
- ◆ UNIT: mm

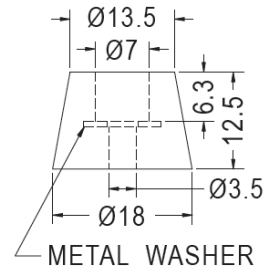


用途：橡胶脚垫，铁垫圈，机械外壳之座垫，内含有铁垫圈，使用螺丝固定，安全不脱落，耐重压。

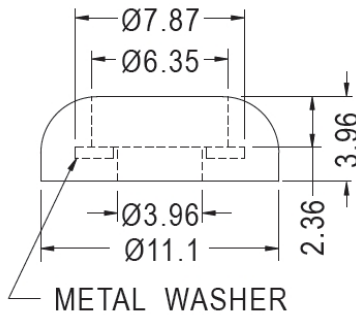
PART NO	PACKAGE
ZNP329	1000



PART NO	PACKAGE
ZNP330	1000



PART NO	PACKAGE
ZNP331	1000

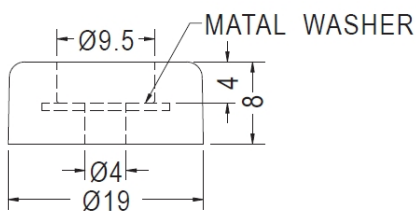


PART NO	PACKAGE
ZNP334	1000

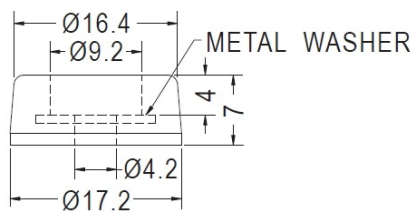


- ◆ MATERIAL : RUBBER/SILICON RUBBER
- ◆ FLAME CLASS : 94HB
- ◆ COLOR : BLACK
- ◆ UNIT: mm

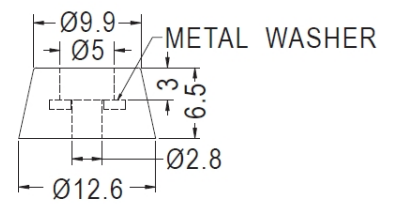
用途：橡胶脚垫，背胶式自粘脚垫，可快速将脚垫固定于机壳，粘性佳、不脱落。



PART NO	PACKAGE
SFF-97	1000



PART NO	PACKAGE
ZNP333	1000

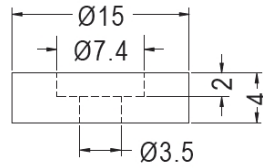


PART NO	PACKAGE
SFF-98	1000

# 橡胶脚垫 RUBBER FOOT

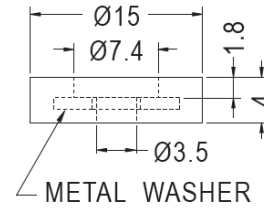


- ◆ MATERIAL : RUBBER
- ◆ COLOR : BLACK
- ◆ UNIT: mm

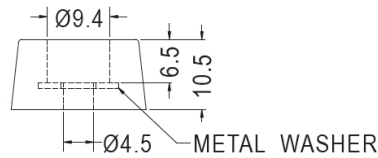
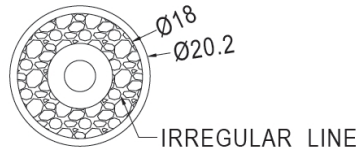


PART NO	PACKAGE
ZNP335	1000

用途：橡胶脚垫，铁垫圈，机械外壳之座垫，内含有铁垫圈，使用螺丝固定，安全不脱落，耐重压。



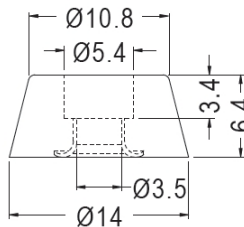
PART NO	PACKAGE
ZNP336	1000



PART NO	PACKAGE
ZNP337	1000



- ◆ MATERIAL : RUBBER
- ◆ RING MATERIAL : BRONZE
- ◆ COLOR : BLACK
- ◆ UNIT: mm

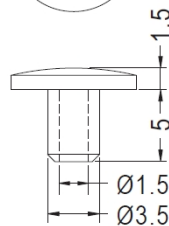
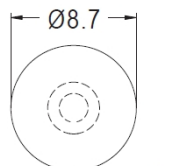


用途：橡胶脚垫，铁垫圈，机械外壳之座垫，内含有铁垫圈，使用螺丝固定，安全不脱落，耐重压。

PART NO	PACKAGE
ZNP338	1000



- ◆ MATERIAL : RUBBER
- ◆ COLOR : BLACK
- ◆ UNIT: mm



MOUNTING HOLE Ø3.5

用途：橡胶脚垫，可快速将脚垫固定于机壳，装配容易，不脱落。

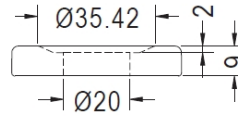
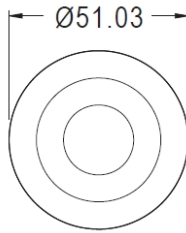
PART NO	PACKAGE
ZNP340	1000

# 橡胶脚垫 RUBBER FOOT



- ◆ MATERIAL : RUBBER
- ◆ COLOR : BLACK
- ◆ UNIT: mm

用途：橡胶脚垫，用于机壳之座垫，  
装配容易，安全不脱落。

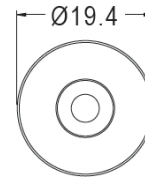
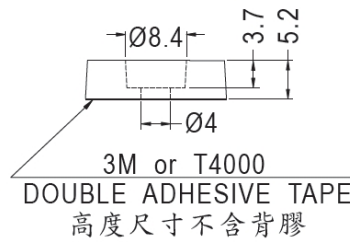


PART NO	PACKAGE
ZNP341	500



- ◆ MATERIAL : RUBBER
- ◆ COLOR : BLACK
- ◆ UNIT: mm

用途：橡胶脚垫，用于机器、电子仪  
器之脚垫，可自粘或螺丝固定  
两用。

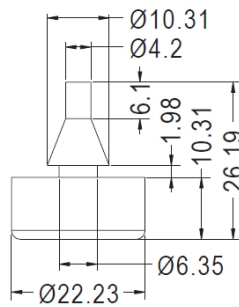


PART NO	PACKAGE
ZNP343	1000



- ◆ MATERIAL : NEOPRENE
- ◆ COLOR : BLACK
- ◆ UNIT: mm

用途：橡胶脚垫，可快速将脚垫固定  
于机壳，装配容易，不脱落。



MOUNTING HOLE Ø8.0  
THICKNESS 2.0

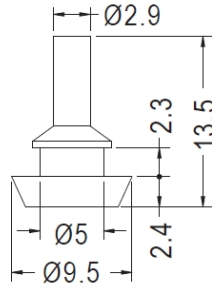
PART NO	PACKAGE
ZNP345	500

# 橡胶脚垫 RUBBER FOOT



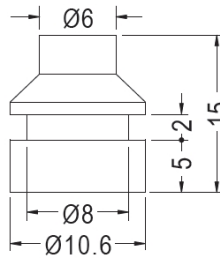
- ◆ MATERIAL : RUBBER
- ◆ COLOR : BLACK
- ◆ UNIT: mm

用途：橡胶脚垫，可快速将脚垫固定于机壳，装配容易，不脱落。

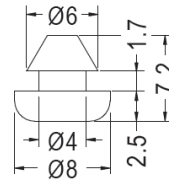


MOUNTING HOLE Ø5.2

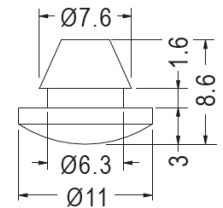
PART NO	PACKAGE
ZNP344	1000



MOUNTING HOLE Ø8.2



MOUNTING HOLE Ø4.2

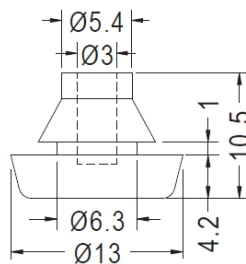


MOUNTING HOLE Ø6.5

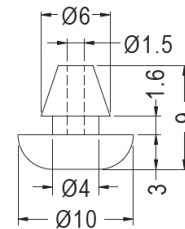
PART NO	PACKAGE
ZNP346	1000

PART NO	PACKAGE
ZNP348	1000

PART NO	PACKAGE
ZNP349	1000



MOUNTING HOLE Ø6.35

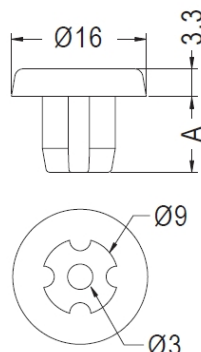


MOUNTING HOLE Ø4.0

• Material: Neoprene

PART NO	PACKAGE
ZNP347	1000

PART NO	PACKAGE
ZNP351	1000



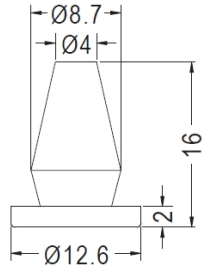
MOUNTING HOLE Ø8.3~Ø8.5

PART NO	A	PACKAGE
ZNP350	9.0	2000
ZNP353	6.5	2000

# 橡胶脚垫 RUBBER FOOT



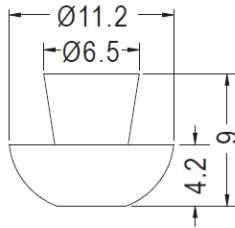
- ◆ MATERIAL : RUBBER
- ◆ COLOR : BLACK
- ◆ UNIT: mm



MOUNTING HOLE Ø7.0

用途：橡胶脚垫，用于机壳之座垫，  
装配容易，安全不脱落。

PART NO	PACKAGE
ZNP355	500

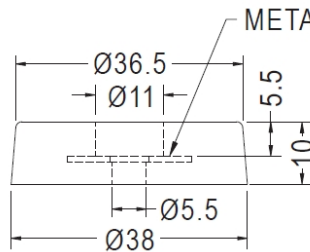


MOUNTING HOLE Ø5.0

PART NO	PACKAGE
ZNP356	1000

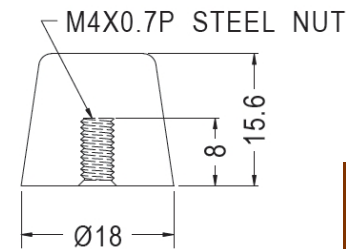


- ◆ MATERIAL : RUBBER
- ◆ COLOR : BLACK
- ◆ UNIT: mm

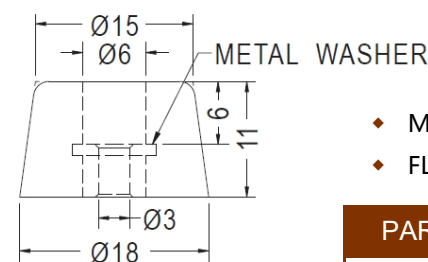


PART NO	PACKAGE
ZNP354	250

用途：橡胶脚垫，铁垫圈，机械外壳  
之座垫，内含有铁垫圈，使用  
螺丝固定，安全不脱落，耐重  
压。



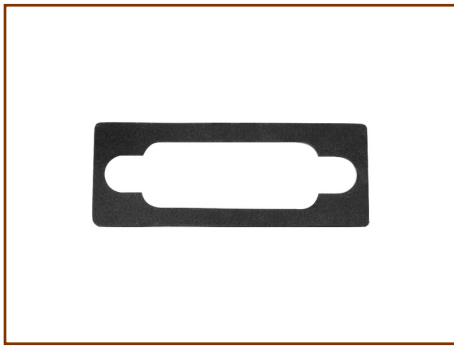
PART NO	PACKAGE
ZNP360	1000



- ◆ MATERIAL : RUBBER/SILICON RUBBER
- ◆ FLAME CLASS : 94HB

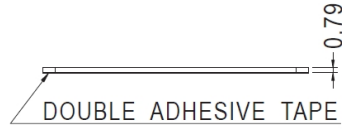
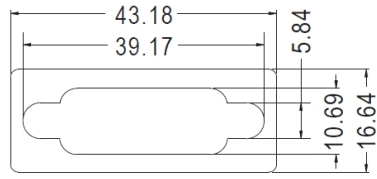
PART NO	PACKAGE
ZNP361	1000

## 橡胶脚垫 RUBBER FOOT



- ◆ MATERIAL : SILICON RUBBER
- ◆ COLOR : BLACK
- ◆ UNIT: mm

用途：橡胶脚垫，背胶式，可贴于D-SUB连接器之外观或里面保护或绝缘。

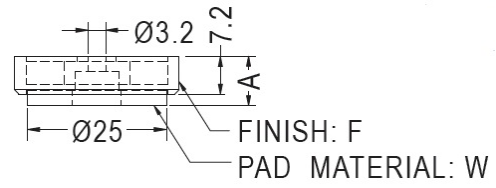
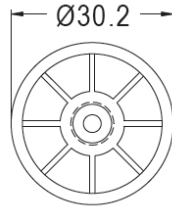


PART NO	PACKAGE
ZNP368	1000

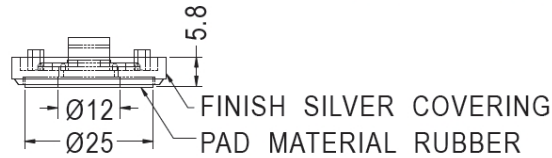
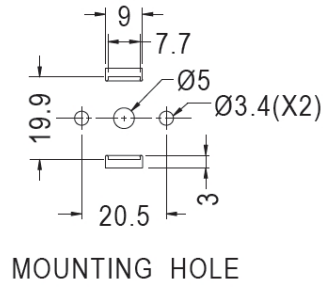
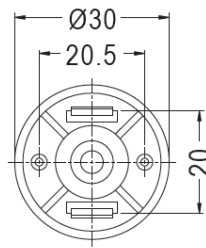
# 银框脚垫 Silver Covering Foot

用途：橡胶脚垫，用于音响、影碟机等之脚垫，装配容易、美观。

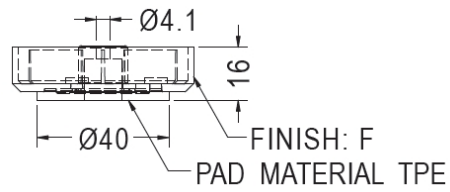
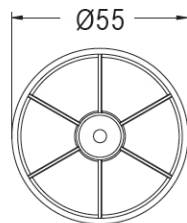
- ◆ MATERIAL : ABS(UL)
- ◆ FLAME CLASS : 94HB
- ◆ COLOR : BLACK
- ◆ UNIT: mm



PART NO	A	F	W
RFF-1	9.1	SILVER COVERING	EVA
RFF-2	9.1	—	EVA
RFF-3	8.2	SILVER COVERING	RUBBER



PART NO
RFF-4



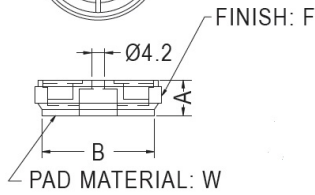
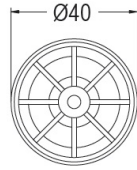
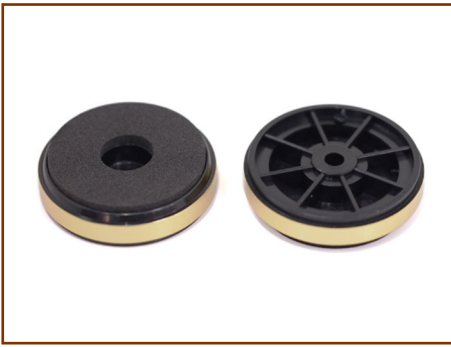
PART NO	F
RFF-5	SILVER COVERING
RFF-6	—



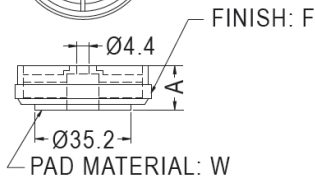
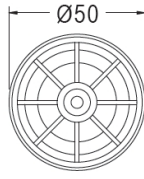
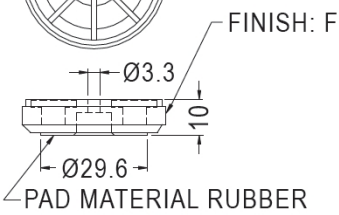
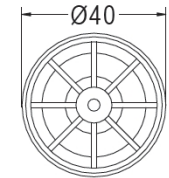
# 金框脚垫 Gold Covering Foot / 银框脚垫 Silver Covering Foot / 脚垫 FOOT

用途：金框脚垫，用于音响、影碟机等之脚垫，装配容易、美观。

- ◆ MATERIAL : ABS
- ◆ COLOR : BLACK
- ◆ UNIT: mm

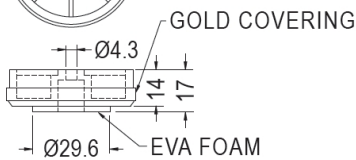
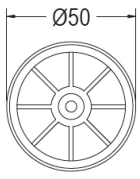


PART NO	A	B	F	W
RAS-01	10.8	35.5	GOLD COVERING	EVA
RAS-02	10.2	35.5	GOLD COVERING	RUBBER
RAS-03	11.0	35.0	SILVER COVERING	EVA
RAS-04	10.2	35.5	SILVER COVERING	RUBBER

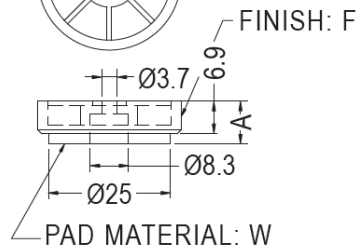
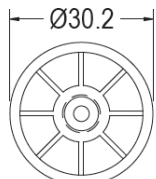


PART NO	A	F	W
RAS-07	16.2	GOLD COVERING	EVA
RAS-08	15.4	GOLD COVERING	RUBBER
RAS-09	16.0	SILVER COVERING	EVA
RAS-10	-	GOLD COVERING	-
RAS-11	16.2	—	EVA
RAS-12	15.4	—	RUBBER

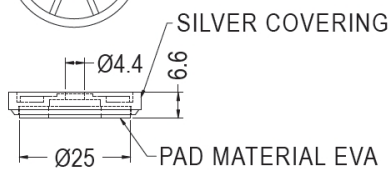
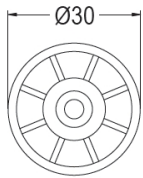
PART NO	F
RAS-05	GOLD COVERING
RAS-06	SILVER COVERING



PART NO
RAS-13



PART NO	A	F	W
RAS-14	9.0	SILVER COVERING	EVA
RAS-15	8.0	SILVER COVERING	RUBBER
RAS-16	8.0	GOLD COVERING	RUBBER
RAS-17	-	SILVER COVERING	-



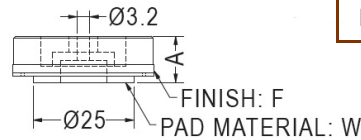
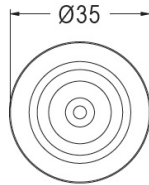
PART NO
RAS-18

# 金框脚垫 Gold Covering Foot / 银框脚垫 Silver Covering Foot / 脚垫 FOOT

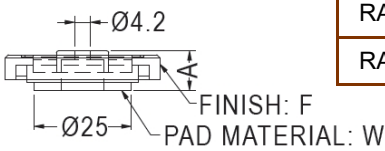
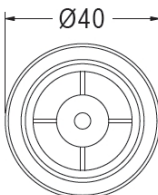


- ◆ HOUSING MATERIAL : ABS
- ◆ METAL MATERIAL : AL
- ◆ COLOR : BLACK
- ◆ UNIT: mm

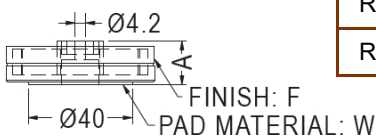
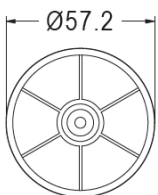
用途：金框脚垫，用于音响、影碟机等之脚垫，装配容易、美观。



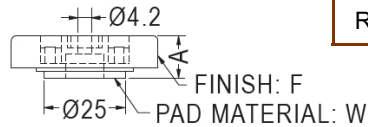
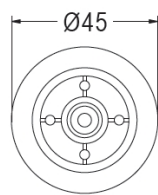
PART NO	A	F	W
RAS-19	11.5	GOLDEN ALUM.COVERING	EVA
RAS-20	11.5	SILVER ALUM.COVERING	EVA
RAS-21	10.5	SILVER ALUM.COVERING	RUBBER



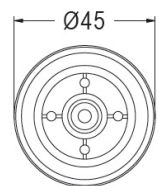
PART NO	A	F	W
RAS-22	12.0	GOLDEN ALUM.COVERING	EVA
RAS-23	11.0	GOLDEN ALUM.COVERING	RUBBER
RAS-24	12.0	SILVER ALUM.COVERING	EVA
RAS-25	11.0	SILVER ALUM.COVERING	RUBBER
RAS-26	12.0	CHAMPAGNE COLOR	EVA



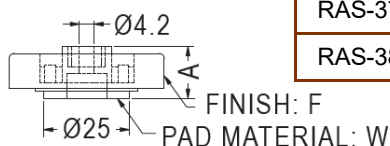
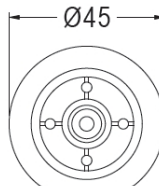
PART NO	A	F	W
RAS-27	17.0	GOLDEN ALUM.COVERING	EVA
RAS-28	17.1	GOLDEN ALUM.COVERING	RUBBER
RAS-29	17.0	SILVER ALUM.COVERING	EVA
RAS-30	17.1	SILVER ALUM.COVERING	RUBBER



PART NO	A	F	W
RAS-31	12.5	SILVER ALUM.COVERING	EVA
RAS-32	11.5	SILVER ALUM.COVERING	RUBBER
RAS-33	11.5	GOLDEN ALUM.COVERING	RUBBER



**PART NO**  
**RAS-39**



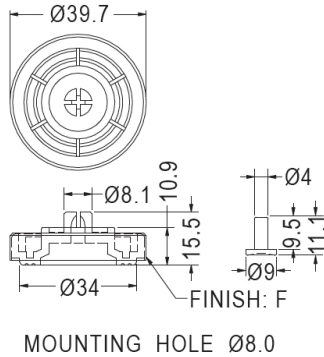
PART NO	A	F	W
RAS-34	15.0	GOLDEN ALUM.COVERING	EVA
RAS-35	15.0	SILVER ALUM.COVERING	EVA
RAS-36	14.0	SILVER ALUM.COVERING	RUBBER
RAS-37	14.1	SILVER ALUM.COVERING	RUBBER
RAS-38	14.1	SILVER ALUM.COVERING	SILICON RUBBER

# 金框脚垫 Gold Covering Foot / 银框脚垫 Silver Covering Foot / 脚垫 FOOT

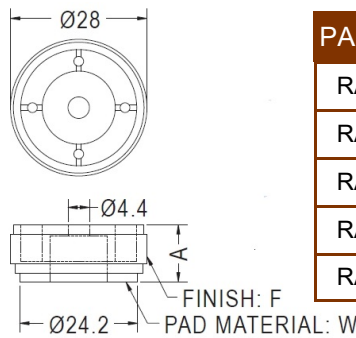


- ◆ FOOT MATERIAL : PE
- ◆ PIN MATERIAL : PP
- ◆ METAL MATERIAL : AL
- ◆ COLOR : BLACK
- ◆ UNIT: mm

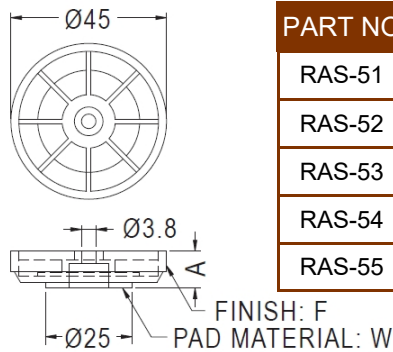
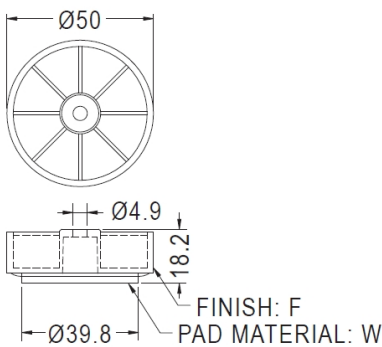
用途：金框脚垫，用于音响、影碟机等之脚垫，装配容易、美观。



PART NO	F
RAS-40	GOLDEN ALUM.COVERING
RAS-41	SILVER ALUM.COVERING
RAS-42	BLACK ALUM.COVERING

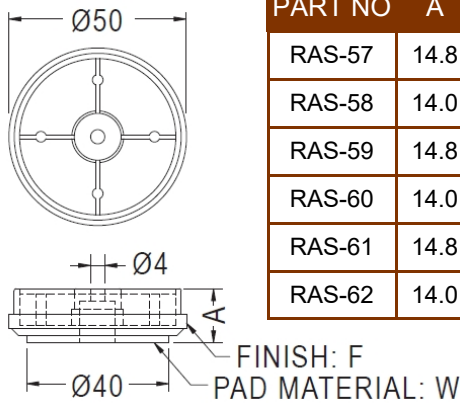
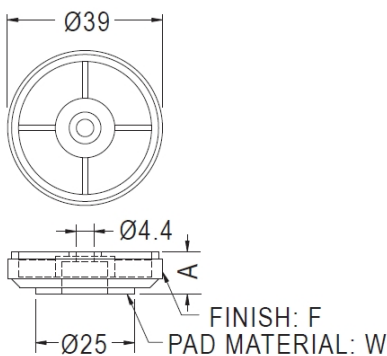


PART NO	A	F	W
RAS-43	11.7	GOLDEN ALUM.COVERING	EVA
RAS-44	11.7	SILVER ALUM.COVERING	EVA
RAS-45	10.7	SILVER ALUM.COVERING	RUBBER
RAS-46	10.7	—	RUBBER
RAS-47	10.0	—	-



PART NO	A	F	W
RAS-51	10.7	GOLDEN ALUM.COVERING	EVA
RAS-52	10.7	SILVER ALUM.COVERING	EVA
RAS-53	9.7	GOLDEN ALUM.COVERING	RUBBER
RAS-54	9.7	SILVER ALUM.COVERING	RUBBER
RAS-55	9.7	SILVER ALUM.COVERING	SILICON RUBBER

PART NO	F	W
RAS-56	GOLDEN ALUM.COVERING	EVA



PART NO	A	F	W
RAS-57	14.8	GOLDEN ALUM.COVERING	EVA
RAS-58	14.0	GOLDEN ALUM.COVERING	RUBBER
RAS-59	14.8	—	EVA
RAS-60	14.0	—	RUBBER
RAS-61	14.8	SILVER ALUM.COVERING	EVA
RAS-62	14.0	SILVER ALUM.COVERING	RUBBER

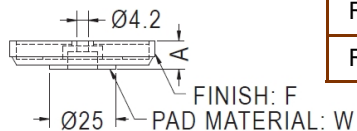
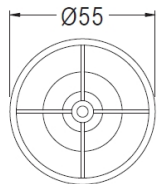
PART NO	A	F	W
RAS-48	10.7	GOLDEN ALUM.COVERING	EVA
RAS-49	10.7	SILVER ALUM.COVERING	EVA
RAS-50	9.8	SILVER ALUM.COVERING	RUBBER

# 金框脚垫 Gold Covering Foot / 银框脚垫 Silver Covering Foot / 脚垫 FOOT

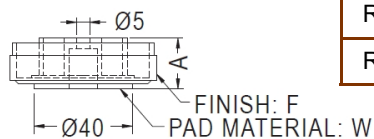
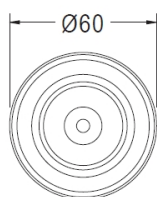


- ◆ FOOT MATERIAL : PE
- ◆ PIN MATERIAL : PP
- ◆ METAL MATERIAL : AL
- ◆ COLOR : BLACK
- ◆ UNIT: mm

用途：金框脚垫，用于音响、影碟机等之脚垫，装配容易、美观。



PART NO	A	F	W
RAS-63	10.7	GOLDEN ALUM.COVERING	EVA
RAS-64	10.7	SILVER ALUM.COVERING	EVA
RAS-65	9.7	SILVER ALUM.COVERING	RUBBER

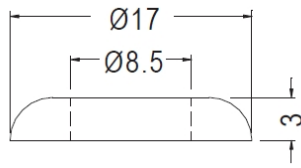


PART NO	A	F	W
RAS-66	20.0	—	EVA
RAS-67	20.0	GOLDEN ALUM.COVERING	EVA
RAS-68	20.0	DARK GRAY COVERING	EVA
RAS-69	20.0	SILVER ALUM.COVERING	EVA
RAS-70	19.3	SILVER ALUM.COVERING	RUBBER

# 橡胶垫圈 Rubber Washer 背胶式 橡胶华司 橡胶垫片



- ◆ MATERIAL : RUBBER
- ◆ COLOR : BLACK
- ◆ UNIT: mm



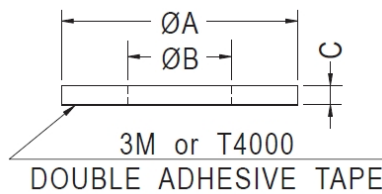
用途：橡胶垫圈，做为零件之垫片。

PART NO

RNWF-1



- ◆ MATERIAL : RUBBER/SILICON RUBBER
- ◆ COLOR : BLACK
- ◆ UNIT: mm



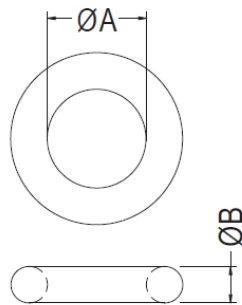
用途：橡胶垫圈，背胶式，可快速将垫圈固定于机壳，粘性佳、不脱落。

PART NO	A	B	C
RNWF-2	8.0	3.5	0.5
RNWF-3	8.0	3.5	1.0
RNWF-4	11.0	3.5	1.5
RNWF-5	20.0	6.0	1.5
RNWF-6	25.0	11.0	2.0
RNWF-7	40.0	12.0	2.0
RNWF-8	43.0	30.1	2.0
RNWF-9	18.0	8.5	1.5
RNWF-10	29.6	10.2	2.0
RNWF-11	15.0	4.5	3.0
RNWF-12	8.0	4.5	2.0

橡胶垫圈



- ◆ MATERIAL : NBR/EPDM
- ◆ COLOR : BLACK
- ◆ UNIT: mm



用途：橡胶垫圈，做为零件之油封或垫片。

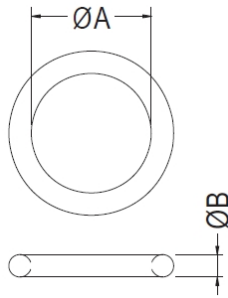
PART NO	A	B	PACKAGE
ORL-09	5.8	1.9	2000
ORL-10	6.02	2.6	2000
ORL-11	7.0	2.0	2000
ORL-12	7.9	1.0	2000
ORL-13	11.0	2.0	2000
ORL-14	21.3	3.0	2000
ORL-15	25.2	3.5	2000
ORL-16	84.4	3.1	2000
ORL-17	20.0	1.0	500
ORL-18	1.7	0.6	2000
ORL-19	5.5	3.15	2000
ORL-20	6.07	1.63	2000
ORL-21	7.65	1.78	2000

PART NO	A	B	PACKAGE
ORL-01	2.0	1.0	2000
ORL-02	2.75	0.6	2000
ORL-03	2.8	0.5	2000
ORL-04	2.9	1.78	2000
ORL-05	3.6	1.78	2000
ORL-06	4.0	2.0	2000
ORL-07	4.6	1.78	2000
ORL-08	5.0	1.0	2000

# 硅胶垫圈 Silicon Rubber O-Ring 矽胶垫圈



- ◆ FOOT MATERIAL : SILICON RUBBER      用途: 做为零件之油封或垫片。
- ◆ COLOR : BLACK
- ◆ UNIT: mm

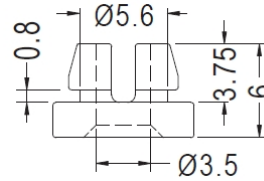
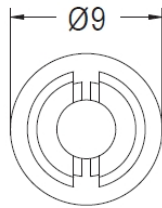


PART NO	A	B	PACKAGE
ORS-1	8.0	1.5	2000
ORS-2	10.5	1.0	2000
ORS-3	15.0	1.5	2000
ORS-4	2.4	1.9	2000
ORS-5	2.6	1.1	2000
ORS-6	10.6	1.25	2000
ORS-7	31.47	1.78	2000

# 硅胶脚垫 SILICON RUBBER FOOT



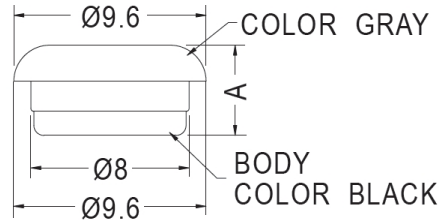
- ◆ MATERIAL : SILICON RUBBER      用途: 硅胶脚垫, 可快速将脚垫固定于机壳, 装配容易, 不脱落。
- ◆ COLOR : BLACK
- ◆ UNIT: mm



PART NO	PACKAGE
SFF-105	1000



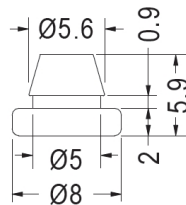
- ◆ MATERIAL : SILICON RUBBER      用途: 硅胶脚垫, 做为脚垫止滑用。
- ◆ BODY MATERIAL : NYLON 66(UL)
- ◆ COLOR : BLACK
- ◆ UNIT: mm



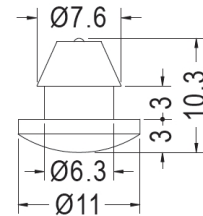
PART NO	A	PACKAGE
SFF-36	4.5	2000
SFF-37	4.55	2000



- ◆ MATERIAL : SILICON RUBBER      用途: 硅胶脚垫, 可快速将脚垫固定于机壳, 装配容易, 不脱落。
- ◆ FLAME CLASS : 94HB/94V-0
- ◆ COLOR : BLACK
- ◆ UNIT: mm



MOUNTING HOLE Ø4.5~Ø5.0



MOUNTING HOLE Ø6.3

PART NO	PACKAGE
SFF-95	2000

6PART NO	PACKAGE
SFF-96	2000

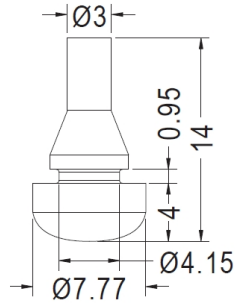
# 硅胶脚垫 SILICON RUBBER FOOT



用途：硅胶脚垫，可快速将脚垫固定于机壳，装配容易，不脱落。

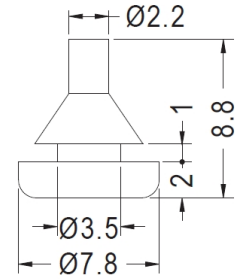
- ◆ MATERIAL : SILICON RUBBER
- ◆ COLOR : BLACK
- ◆ UNIT: mm

- ◆ MATERIAL : EPDM
- ◆ COLOR : BLACK
- ◆ UNIT: mm



MOUNTING HOLE Ø4.2

PART NO	PACKAGE
SFF-208	2000



MOUNTING HOLE Ø3.5

6PART NO	PACKAGE
SFF-106	2000

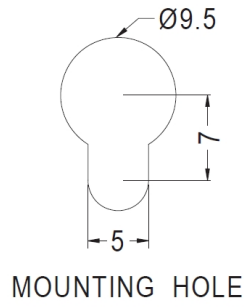
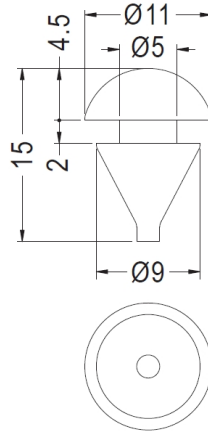


塑料脚垫 SILICON RUBBER FOOT 脚垫



- ◆ MATERIAL : TPE
- ◆ COLOR : WHITE
- ◆ UNIT: mm

用途：塑料脚垫，可快速将脚垫固定于机壳，装配容易，不脱落。



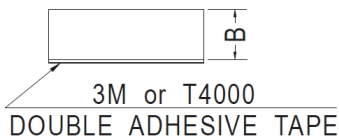
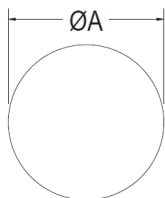
PART NO	PACKAGE
SFF-111	2000

# 橡胶脚垫 RUBBER FOOT



用途：橡胶脚垫，背胶式，可快速将脚垫固定于机壳，粘性佳、不脱落。  
可依客户指定长、宽、高裁切成各种形状，如方形、圆形。表面可分为平面、斜纹等。

- ◆ MATERIAL : SILICON RUBBER / RUBBER
- ◆ COLOR : BLACK
- ◆ UNIT: mm
- ◆ OTHER MATERIALS AVAILABLE : EPDM ,PORON
- ◆ OPTIONAL THICKNESS : 0.5~3.2mm



可依客户指定长、宽、高裁切成各种形状，如方形、圆形。表面可分为平面、斜纹等。

Different size available per request.

PART NO	A	B
SRF001	3.8	2.0
SRF002	4.0	1.5
SRF003	10.0	1.6
SRF004	10.0	1.8
SRF005	11.6	3.2
SRF006	12.0	1.0
SRF007	12.0	2.0
SRF008	12.0	3.2
SRF009	12.5	2.0
SRF010	12.7	3.2
SRF011	14.5	3.0
SRF012	14.6	3.0
SRF013	15.0	1.0
SRF014	15.0	2.0
SRF015	15.0	3.0
SRF016	19.8	2.3
SRF017	20.0	2.3
SRF018	20.0	2.5
SRF019	20.0	3.0
SRF020	22.0	2.5
SRF021	4.0	0.5

PART NO	A	B
SRF022	6.0	0.5
SRF023	7.0	0.5
SRF024	8.0	0.5
SRF025	4.0	0.6
SRF026	5.3	0.7
SRF027	6.0	0.8
SRF028	9.5	0.8
SRF029	10.0	0.8
SRF030	6.0	0.9
SRF031	7.0	0.9
SRF032	4.8	1.0
SRF033	6.0	1.0
SRF034	6.5	1.0
SRF035	7.0	1.0
SRF036	8.0	1.8
SRF037	8.0	1.0
SRF038	9.0	1.0
SRF039	10.0	1.0
SRF040	10.5	1.0
SRF041	12.5	1.0
SRF042	13.0	1.0
SRF043	19.0	1.0
SRF044	20.0	1.0
SRF045	40.0	1.0
SRF046	9.0	1.2
SRF047	6.0	1.3

PART NO	A	B
SRF048	10.0	1.3
SRF049	18.0	1.3
SRF050	8.0	1.4
SRF051	4.5	1.5
SRF052	5.0	1.5
SRF053	6.0	1.5
SRF054	6.6	1.5
SRF055	7.5	1.5
SRF056	7.2	1.5
SRF057	8.0	1.5
SRF058	8.5	1.5
SRF059	9.0	1.5
SRF060	9.5	1.5
SRF061	12.0	1.5
SRF062	18.0	1.5
SRF063	20.0	1.5
SRF064	58.0	1.5
SRF065	5.5	1.6
SRF066	6.6	1.8
SRF067	9.5	1.8
SRF068	20.0	1.8
SRF069	5.0	2.0
SRF070	5.6	2.0
SRF071	6.0	2.0
SRF072	6.6	2.0
SRF073	7.0	2.0

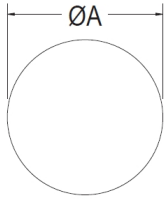
橡胶脚垫

# 橡胶脚垫 RUBBER FOOT

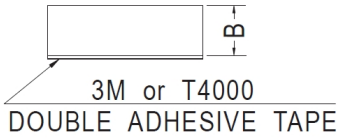


用途：橡胶脚垫，背胶式，可快速将脚垫固定于机壳，粘性佳、不脱落。  
可依客户指定长、宽、高裁切成各种形状，如方形、圆形。表面可分为平面、斜纹等。

- ◆ MATERIAL : SILICON RUBBER / RUBBER
- ◆ COLOR : BLACK
- ◆ UNIT: mm
- ◆ OTHER MATERIALS AVAILABLE : EPDM ,PORON
- ◆ OPTIONAL THICKNESS : 0.5~3.2mm



可依客户指定长、宽、高裁切成各种形状，如方形、圆形。表面可分为平面、斜纹等。  
Different size available per request.



PART NO	A	B
SRF096	7.0	2.7
SRF097	12.0	2.7
SRF098	6.0	3.0
SRF099	8.0	3.0
SRF100	9.0	3.0
SRF101	9.5	3.0
SRF102	10.0	3.0
SRF103	12.0	3.0
SRF104	13.0	3.0
SRF105	16.5	3.0
SRF106	19.0	3.0
SRF107	24.6	3.0
SRF108	27.0	3.0
SRF109	28.0	3.2
SRF110	5.0	3.5
SRF111	6.0	3.5
SRF112	12.0	3.6
SRF113	14.0	4.0
SRF114	14.5	4.0
SRF115	19.0	4.0
SRF116	10.5	15.0
SRF140	7.0	3.0
SRF141	4.0	3.0
SRF142	22.1	10.4
SRF143	64.7	2.5

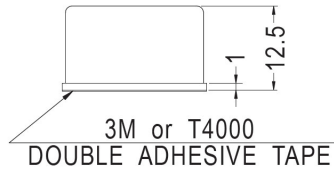
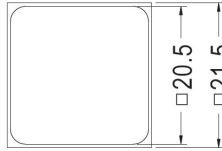
PART NO	A	B
SRF074	7.5	2.0
SRF075	8.0	2.0
SRF076	8.5	2.0
SRF077	9.0	2.0
SRF078	9.5	2.0
SRF079	10.0	2.0
SRF080	10.5	2.0
SRF081	19.0	2.0
SRF082	22.0	2.0
SRF083	30.0	2.0
SRF084	58.0	2.0
SRF085	25.0	2.3
SRF086	5.0	2.5
SRF087	6.0	2.5
SRF088	6.5	2.5
SRF089	7.0	2.5
SRF090	8.0	2.5
SRF091	9.0	2.5
SRF092	18.0	2.5
SRF094	6.4	2.6
SRF095	4.5	2.7

# 橡胶脚垫 RUBBER FOOT

用途：橡胶脚垫，背胶式，可快速将脚垫固定于机壳，粘性佳、不脱落。

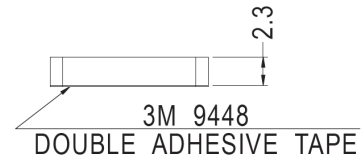
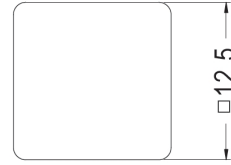


- ◆ MATERIAL : RUBBER
- ◆ COLOR : COMPUTER
- ◆ UNIT: mm



PART NO	PACKAGE
SRF144	1000

- ◆ MATERIAL : RUBBER
- ◆ COLOR : BLACK
- ◆ UNIT: mm



PART NO	PACKAGE
SRF171	1000

# 电子电脑塑胶五金零件目录

1.LED间隔柱

2.LED导光柱 LED导光盖 LED遮光罩

3.LED座 LED座套 红外线灯罩 光纤座

4.90°LED灯座 45°LED灯座

5. PC板间隔柱 PC板隔离柱

6. 塑料铜柱 尼龙柱 六角隔离柱 塑胶铜柱 铜柱 导光板隔离柱 圆体间隔柱 PC板固定定座 固定扣 电路板隔离柱 导电隔离柱

7. 排线固定座 自粘式配线固定座 排线固定夹 压线板 电线固定座 扭线固定座 扭式固定环 扎线固定座 电源线固定座 电源线固定座插头固定扣 天线固定座 T8灯管固定座 风扇束线座 光纤固定座

8. PC板端子 接线插片端子 PC板焊接端子 接地片 圆形连接片 弹片 测试针 探针 测试点 保险丝座 保险丝盖 插式电线连接头 闭端端子 弹簧螺纹端子 压线帽 端子台 快速接线夹 跳线

9. 仪表脚垫 插销式脚垫 螺丝固定脚垫 脚垫 抗震脚垫 磁铁脚垫 橡胶脚垫 自粘脚垫 银框脚垫 金框脚垫 橡胶垫圈 橡胶华司 橡胶垫片 硅胶脚垫

10. 塑料螺丝 塑胶螺丝 翼型塑料螺丝 塑料螺帽 塑料螺帽 蝶形螺母 止付螺丝 紧定螺钉 内牙螺丝 螺丝帽盖 手转螺丝 手拧螺丝 滚花螺丝 手转螺母 手拧螺母

11. PC板拉柄 PC板耳把 PC板导槽 电路板导轨 PCB导轨槽 直立式导槽 电路板导轨

12. 晶体管盖 电晶体盖 晶体管垫片 电晶体垫片 晶体管座 电晶体座 T-O3晶体管座 石英晶体垫片 垫圈 华司 垫片 TO-220晶体管座 光电晶体座 电晶体座 IR晶体座 霍尔晶体座 硅胶帽套 功率晶体导热硅片 功率晶体压板 电源固定压条 晶体管固定弹片 五金弹片 电晶体固定弹片 晶体管夹

# 电子电脑塑胶五金零件目录

13.电容器垫片 垫圈 华司 电容器座 电容器帽套 电容器固定座 电容器盖 电容器护套 压敏护套 硅胶帽套

14.热敏电阻座 电阻保护座 保护电阻器 可变电阻盖

15.陶瓷零件垫片 零件垫片 垫圈 华司 零件垫座 IC座 桥式整流座 跳线座 线圈座 滤波器垫片 绝缘柱 螺丝垫片 滚轮 PC板垫片 球击缓冲垫片 尼龙垫圈 尼龙弹簧垫片 散热陶瓷垫片

16.功率IC盖 桥式整流盖 保护盖 开关盖 硅胶盖 绝缘盖 电池盖 末端套管 软质端子保护套PC端子保护套 喇叭座 拉柄箱扣 线圈固定座 DRAM固定带 十字型插件式固定器 轨道固定器

17.孔塞 扣式孔塞 扣式塞头 DVI防尘盖 螺丝孔孔塞 螺丝塞头 螺纹孔塞

18.电源线扣 电线固定夹 护线环 橡胶圈 护线圈 开口式护线环 橡胶线环 硅胶线环 硅胶护线环 天线护线环 方型护线环 U型护线环 抗震护线环 防震线环 抗震线环用插销 抗震线环用螺丝 硬盘驱动器防震座 透气压力平衡固定头 透气平衡压力固定扣

19.把手 机箱把手 仪器门拉手 纸箱把手 纸箱配件 打包扣 外箱护脚垫 纸箱外箱扣

20.阻尼齿轮 阻尼器 缓冲齿轮

21.电线扎带 电线束线带 固定带 扎线 电源线收线带 珠型扎带 水管座 扎带座 扎带扣 吊勾粘扣带 绑线带

22.USB座护盖 USB端口保护盖 USB端口防尘盖 MICRO USB防尘盖 MINI USB座护盖USB Type-C防尘盖 USB防尘盖 RJ-45防尘盖 RJ-11防尘盖 RJ-12防尘盖 RJ-22防尘盖 电源插头防尘盖 电源插头保护座 电源插头防尘座 电源插头防尘盖 光纤连接器护盖 光纤连接器护套 光纤防尘盖 PC板金手指防尘盖 HDMI防尘盖 Mini数位端子防尘盖 汽车点烟器防尘盖BBU防尘盖 DVI防尘盖 连接器盖 SIM Card Cap防尘盖 SD防尘盖 KVM防尘盖 CF防尘盖 防尘盖 端子盖 S端子盖 平衡端子盖 BNC绝缘座 SATA防尘盖 ESATA护盖 DP端子防尘盖 Mini D.P数位端子防尘盖 D.Type防尘盖 VGA防尘盖 IDE Connector防尘盖 PC端子防尘盖 端子防尘盖 1394端子防尘盖 零件盖 电源盖 机板电源保护盖 连接器座 PCMIC卡保护盖 面板 DDR防尘盖 D-Sub保护盖 高压防尘盖 SD保护盖 Micoro SD卡保护盖 SIM卡保护盖 防水帽盖 帽盖连接带 防水圈 电脑风扇防护盖 电脑风扇防尘座 电脑风扇框护垫 电脑风扇支架 开关遮板 光纤晶体座

# 电子电脑塑胶五金零件目录

23.插销 铆钉 尼龙铆钉 螺丝铆钉 散热片铆钉 塑料铆钉 电脑风扇铆钉 散热片扣件 弹簧铆钉 螺丝固定座 膨胀螺栓 墙塞 无帽鱼型膨胀管 墙面固定座 石膏板固定座

24.固定扣 门扣开关 机器门扣开关 弹簧固定座 旋转型门扣 门扣碰珠 磁铁门扣

55.工具 线扣工具 进口束线枪 旗型端子工具 国产束线枪 非绝缘端子工具 绝缘端子工具



# 电子电脑塑胶五金零件目录



1.LED间隔柱



2.LED导光柱



3.LED座



4.90°LED灯座



5.PC板间隔柱



6.塑料铜柱



7.排线固定座



8.PC板端子



9.仪表脚垫



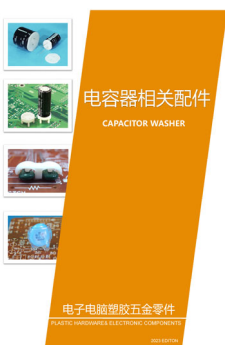
10.塑料螺丝



11.PC板拉柄导槽



12.晶体管盖



13.电容器垫片



14.热敏电阻座



15.陶瓷零件垫片



16.功率IC盖





# 电子电脑塑胶五金零件目录



17.孔塞



18.电源线扣



19.机箱把手



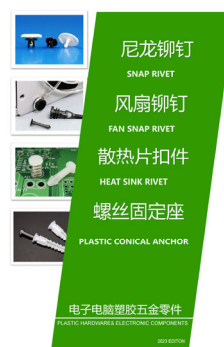
20.阻尼齿轮



21.电线扎带



22.USB座护盖



23.尼龙铆钉



24.门扣开关



55.工具

## 电子电脑塑胶五金零件

PLASTIC HARDWARE & ELECTRONIC COMPONENTS



南京泽金电气有限公司

Nanjing Zhejin Electric Co., Ltd.

2023.03/2024

选型手册总目录

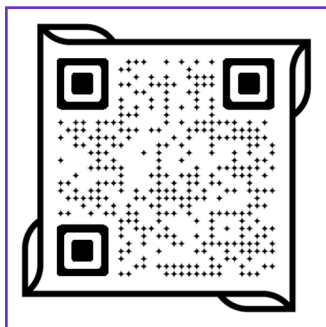
本公司保留因质量改进、后续开发或生产要求引起的设计更改权力。本产品目录为元件的详细说明，不能做担保依据。使用者有义务审核该元件是否符合应用范围的规定。



微信



QQ



网站

## 南京诺金电气有限公司

Nanjing Nowking Electric Co., Ltd

- ◆ Tel: 025-85422485 85436028 85437901
- ◆ Wechat/Mobile :13770725488
- ◆ QQ:260678075
- ◆ E-mail: nk@nowking.com
- ◆ Http://www.nowking.com
- ◆ Http://www.kyphe.com