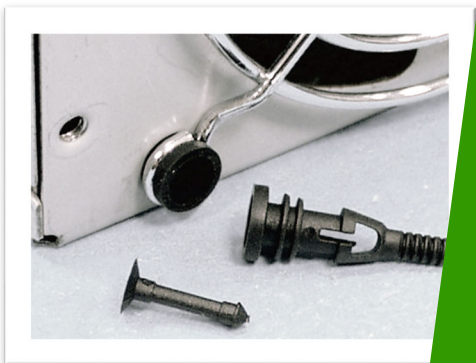




尼龙铆钉

SNAP RIVET



风扇铆钉

FAN SNAP RIVET



散热片扣件

HEAT SINK RIVET



螺丝固定座

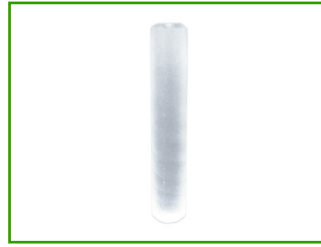
PLASTIC CONICAL ANCHOR

电子电脑塑胶五金零件

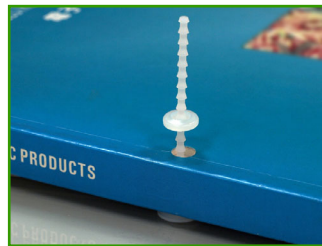
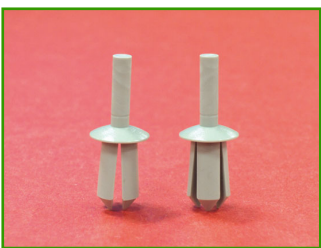
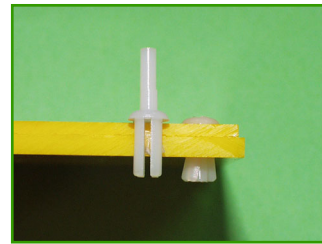
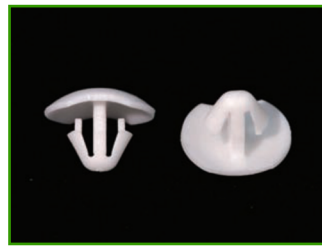
PLASTIC HARDWARE & ELECTRONIC COMPONENTS

2023 EDITON

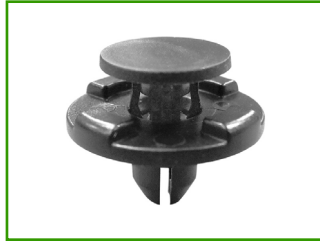
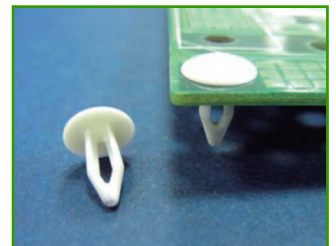
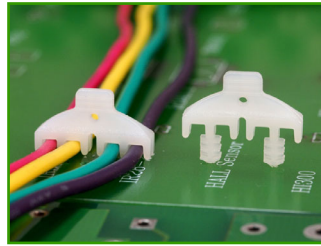
插销 铆钉 尼龙铆钉 螺丝铆钉 散热片铆钉 塑料铆钉 电脑风扇铆钉 散热片扣件 弹簧铆钉 螺丝固定座 膨胀螺栓 墙塞 无帽鱼型膨胀管 墙面固定座 石膏板固定座



插销 铆钉 尼龙铆钉 螺丝铆钉 散热片铆钉 塑料铆钉 电脑风扇铆钉 散热片扣件 弹簧铆钉 螺丝固定座 膨胀螺栓 墙塞 无帽鱼型膨胀管 墙面固定座 石膏板固定座



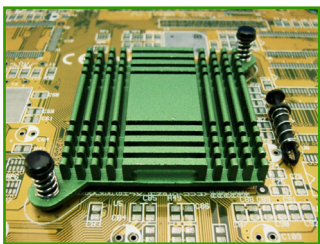
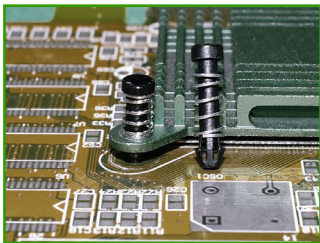
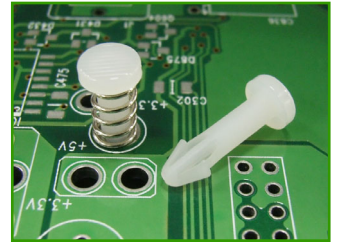
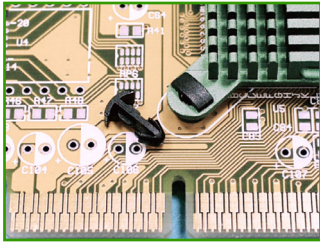
插销 铆钉 尼龙铆钉 螺丝铆钉 散热片铆钉 塑料铆钉 电脑风扇铆钉 散热片扣件 弹簧铆钉 螺丝固定座 膨胀螺栓 墙塞 无帽鱼型膨胀管 墙面固定座 石膏板固定座



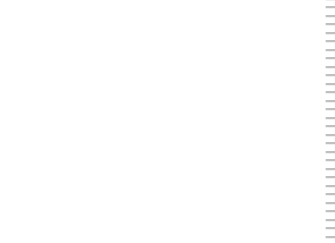
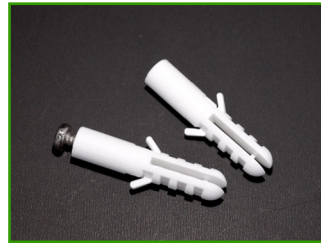
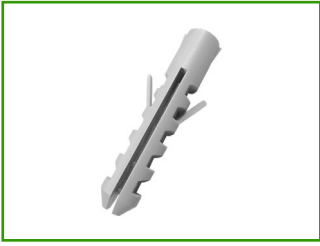
插销 铆钉 尼龙铆钉 螺丝铆钉 散热片铆钉 塑料铆钉 电脑风扇铆钉 散热片扣件 弹簧铆钉 螺丝固定座 膨胀螺栓 墙塞 无帽鱼型膨胀管 墙面固定座 石膏板固定座



插销 铆钉 尼龙铆钉 螺丝铆钉 散热片铆钉 塑料铆钉 电脑风扇铆钉 散热片扣件 弹簧铆钉 螺丝固定座 膨胀螺栓 墙塞 无帽鱼型膨胀管 墙面固定座 石膏板固定座



插销 铆钉 尼龙铆钉 螺丝铆钉 散热片铆钉 塑料铆钉 电脑风扇铆钉 散热片扣件 弹簧铆钉 螺丝固定座 膨胀螺栓 墙塞 无帽鱼型膨胀管 墙面固定座 石膏板固定座



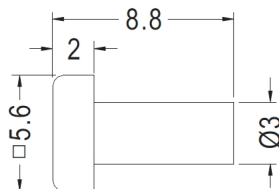
插销 铆钉 尼龙铆钉 螺丝铆钉 散热片铆钉 塑料铆钉 电脑风扇铆钉 散热片扣件 弹簧铆钉 螺丝固定座 膨胀螺栓 墙塞 无帽鱼型膨胀管 墙面固定座 石膏板固定座

插销 PIN



- ◆ MATERIAL : ABS (UL)
- ◆ FLAME CLASS : 94HB
- ◆ COLOR : BLACK
- ◆ UNIT: mm

用途：插销，配合超声波热溶，可当螺丝固定。

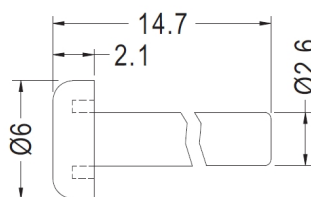


| PART NO | PACKAGE |
|---------|---------|
| ACKS-1 | 2000 |



- ◆ MATERIAL : NYLONG 66 (UL)
- ◆ FLAME CLASS : 94V-2/94V-0
- ◆ COLOR : BLACK/NATURAL
- ◆ UNIT: mm

用途：插销，PC板与机板间固定，省时方便。

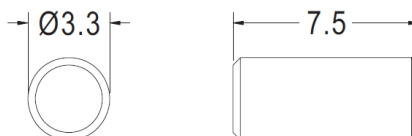


| PART NO | PACKAGE |
|---------|---------|
| ACKS-2 | 1000 |



- ◆ MATERIAL : POM
- ◆ COLOR : NATURAL
- ◆ UNIT: mm

用途：插销，做为塑料插销pin使用。



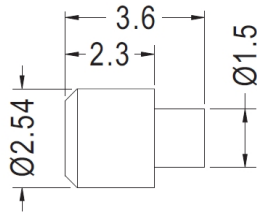
| PART NO | PACKAGE |
|---------|---------|
| ACKS-3 | 2000 |

插销 PIN

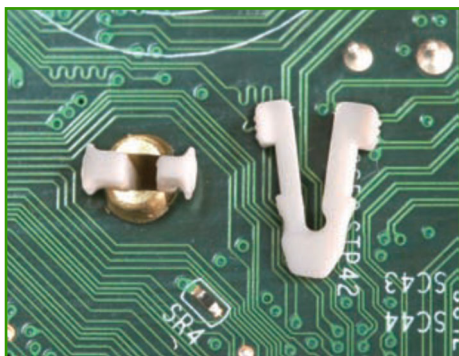


- ◆ MATERIAL : NYLON 66 (UL)
- ◆ FLAME CLASS : 94V-0/94V-2
- ◆ COLOR : NATURAL/WHITE/BLACK
- ◆ UNIT: mm

用途： 插销，做为塑料插销pin使用。

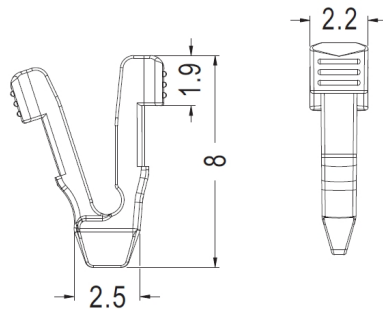


| PART NO | PACKAGE |
|---------|---------|
| ACKS-4 | 1000 |



- ◆ MATERIAL : NYLON 66 (UL)
- ◆ FLAME CLASS : 94V-0/94V-2
- ◆ COLOR : NATURAL/WHITE/BLACK
- ◆ UNIT: mm

用途： 插销，加强散热片铜插销之固定，避免震动脱落。



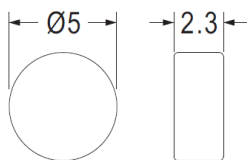
| PART NO | PACKAGE |
|---------|---------|
| ACKS-5 | 2000 |



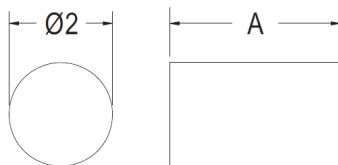
用途： 插销，做为塑料插销pin使用。

- ◆ MATERIAL : NYLON 66 (UL)
- ◆ FLAME CLASS : 94V-0/94V-2
- ◆ COLOR : NATURAL
- ◆ UNIT: mm

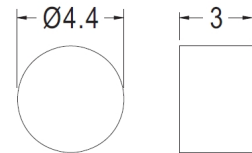
- ◆ MATERIAL : PC+ABS (UL)
- ◆ FLAME CLASS : 94V-0
- ◆ COLOR : NATURAL
- ◆ UNIT: mm



| PART NO | PACKAGE |
|---------|---------|
| ACKS-10 | 2000 |



| PART NO | A | PACKAGE |
|---------|-----|---------|
| ACKS-7 | 3.3 | 2000 |
| ACKS-8 | 3.6 | 2000 |



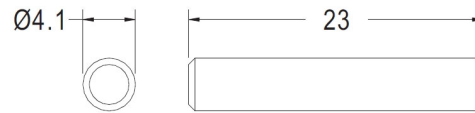
| PART NO | PACKAGE |
|---------|---------|
| ACKS-6 | 2000 |

插销 PIN



- ◆ MATERIAL : PC (UL)
- ◆ FLAME CLASS : 94V-2/94V-0
- ◆ COLOR : TRANSPARENT
- ◆ UNIT: mm

用途： 插销， 散热片上插销使用。



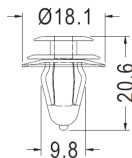
| PART NO | PACKAGE |
|---------|---------|
| ACKS-9 | 2000 |

尼龙铆钉 SNAP RIVET 铆钉



- ◆ MATERIAL : NYLON 66 (UL)
- ◆ FLAME CLASS : 94V-0/94V-2
- ◆ COLOR : NATURAL/BLACK
- ◆ UNIT: mm

用途： 尼龙铆钉，用于车用板件或板件间的固定，使用方便。

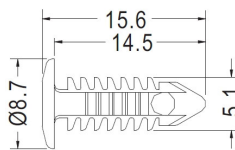


CHASSIS Ø8.0
THICKNESS 0.8~1.6

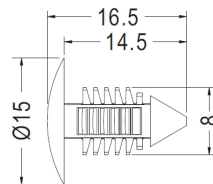
| PART NO | PACKAGE |
|---------|---------|
| NLR-001 | 1000 |



- ◆ MATERIAL : NYLON 66 (UL)/NYLON 6(UL) 用途： 尼龙铆钉，用于木板、铁板、PC板...等板子间的结合固定。
- ◆ FLAME CLASS : 94V-0/94V-2
- ◆ COLOR : NATURAL/BLACK
- ◆ UNIT: mm



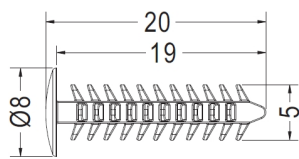
MOUNTING HOLE Ø4.5~Ø4.8



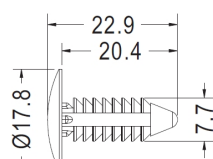
MOUNTING HOLE Ø7.0
THICKNESS 3.2~6.0

| PART NO | PACKAGE |
|---------|---------|
| NLR-002 | 1000 |

| PART NO | PACKAGE |
|---------|---------|
| NLR-098 | 1000 |



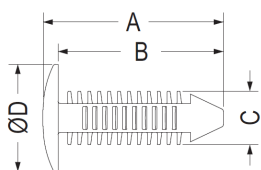
MOUNTING HOLE Ø4.0
THICKNESS 2.1~15.9



MOUNTING HOLE Ø6.0~Ø6.3
THICKNESS 2.5~12.0

| PART NO | PACKAGE |
|---------|---------|
| NLR-147 | 1000 |

| PART NO | PACKAGE |
|---------|---------|
| NLR-206 | 1000 |



MOUNTING HOLE: ØG
THICKNESS: T

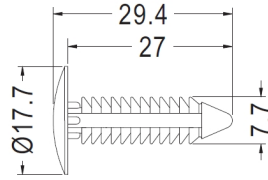
| PART NO | A | B | C | D | G | T | PACKAGE |
|---------|------|------|-----|------|---------|-----------|---------|
| NLR-149 | 18.5 | 17.5 | 5.6 | 11.7 | 4.8 | 2.54~15.2 | 1000 |
| NLR-150 | 21.5 | 20.5 | 5.6 | 11.7 | 4.8 | 4.0~25.0 | 1000 |
| NLR-317 | 19.2 | 18.0 | 3.3 | 6.0 | 2.7~3.3 | 1.5~15.0 | 1000 |
| NLR-318 | 21.8 | 20.0 | 6.5 | 13.0 | 5.6~6.4 | 1.5~15.0 | 1000 |

尼龙铆钉 SNAP RIVET 铆钉



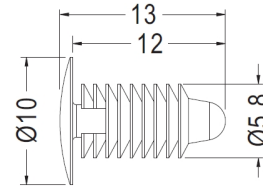
- ◆ MATERIAL : NYLON 66 (UL)
- ◆ FLAME CLASS : 94V-0/94V-2
- ◆ COLOR : NATURAL/BLACK
- ◆ UNIT: mm

用途：尼龙铆钉，用于木板、铁板、PC板...等板子间的结合固定。



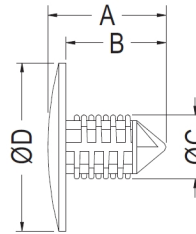
MOUNTING HOLE Ø6.4~Ø7.0

| PART NO | PACKAGE |
|---------|---------|
| NLR-210 | 1000 |



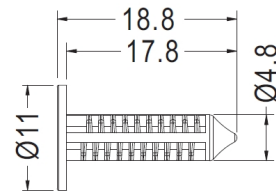
MOUNTING HOLE Ø5.5
THICKNESS 0.7~6.4

| PART NO | PACKAGE |
|---------|---------|
| NLR-211 | 1000 |



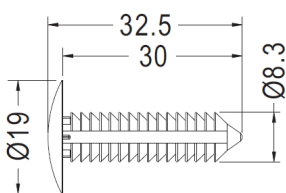
MOUNTING HOLE: ØG
THICKNESS: T

| PART NO | A | B | C | D | G | T | PACKAGE |
|---------|------|------|------|------|------|-----------|---------|
| NLR-212 | 13.0 | 11.0 | 7.4 | 18.5 | 6.35 | 0.8~7.4 | 1000 |
| NLR-213 | 23.0 | 20.0 | 7.86 | 25.4 | 7.0 | 2.54~20.0 | 1000 |



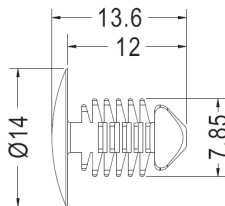
MOUNTING HOLE Ø5.0
THICKNESS 1.5~11.0

| PART NO | PACKAGE |
|---------|---------|
| NLR-219 | 1000 |



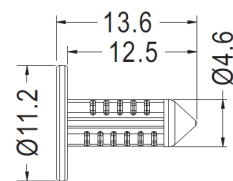
MOUNTING HOLE Ø7.1
THICKNESS 1.5~25.4

| PART NO | PACKAGE |
|---------|---------|
| NLR-222 | 1000 |



MOUNTING HOLE Ø7.0~Ø7.1
THICKNESS 3.0~7.0

| PART NO | PACKAGE |
|---------|---------|
| NLR-223 | 1000 |



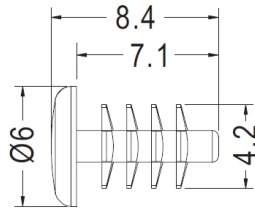
MOUNTING HOLE Ø5.0
THICKNESS 2.5~4.5

| PART NO | PACKAGE |
|---------|---------|
| NLR-231 | 1000 |

尼龙铆钉 SNAP RIVET 铆钉



- ◆ MATERIAL : NYLON 66 (UL)
- ◆ FLAME CLASS : 94V-0/94V-2
- ◆ COLOR : NATURAL/BLACK
- ◆ UNIT: mm



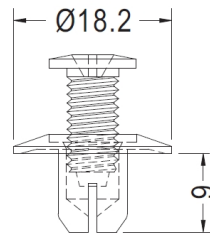
MOUNTING HOLE Ø3.5

用途：尼龙铆钉，用于木板、铁板、PC板...等板子间的结合固定。

| PART NO | PACKAGE |
|---------|---------|
| NLR-003 | 1000 |



- ◆ MATERIAL : NYLON 66 (UL)
- ◆ FLAME CLASS : 94V-0/94V-2
- ◆ COLOR : NATURAL/BLACK
- ◆ UNIT: mm



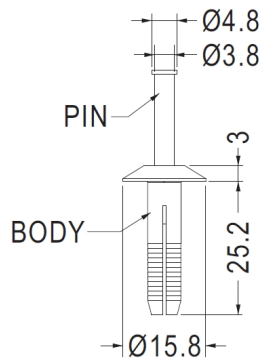
CHASSIS Ø8.0
THICKNESS 3.5~4.2

用途：尼龙铆钉，用于PC板、铁板零件固定，结合力强。

| PART NO | PACKAGE |
|---------|---------|
| NLR-004 | 500 |



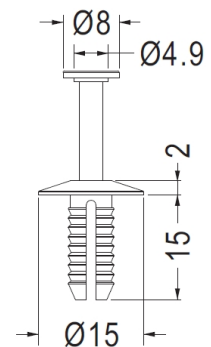
- ◆ MATERIAL : NYLON 66 (UL)
- ◆ FLAME CLASS : 94V-0/94V-2
- ◆ COLOR : NATURAL/BLACK
- ◆ UNIT: mm



CHASSIS Ø6.4

用途：尼龙铆钉，用于装配的孔或机板间的固定，敲入后可牢固于物件上。

| PART NO | PACKAGE |
|---------|---------|
| NLR-005 | 1000 |



CHASSIS Ø6.35

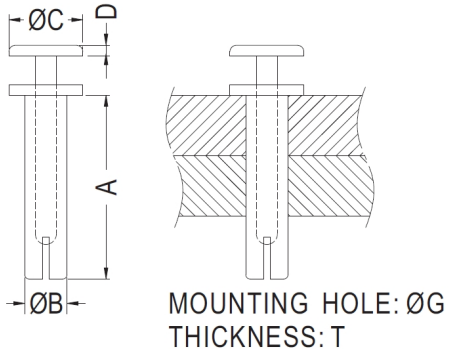
| PART NO | PACKAGE |
|---------|---------|
| NLR-138 | 1000 |

尼龙铆钉 SNAP RIVET 铆钉

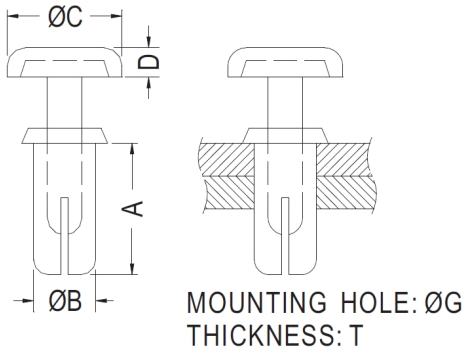


- ◆ MATERIAL : NYLON 66 (UL)
- ◆ FLAME CLASS : 94V-0/94V-2
- ◆ COLOR : NATURAL/BLACK
- ◆ UNIT: mm

用途：尼龙铆钉，用于PC板、铁板零件固定，代替螺丝，省时不需工具，结合力强。



| PART NO | A | B | C | D | G | T | PACKAGE |
|---------|-----|------|-----|------|-----|---------|---------|
| NLR-006 | 4.0 | 2.0 | 3.5 | 0.5 | 2.0 | 2.0~3.0 | 2000 |
| NLR-007 | 5.0 | 2.0 | 4.8 | 0.75 | 2.0 | 2.5~3.5 | 1000 |
| NLR-008 | 6.0 | 2.0 | 4.8 | 0.75 | 2.0 | 3.5~4.5 | 1000 |
| NLR-018 | 7.0 | 2.0 | 4.8 | 0.75 | 2.0 | 4.5~5.5 | 1000 |
| NLR-088 | 8.7 | 1.95 | 3.5 | 0.5 | 2.0 | 7.2 | 1000 |



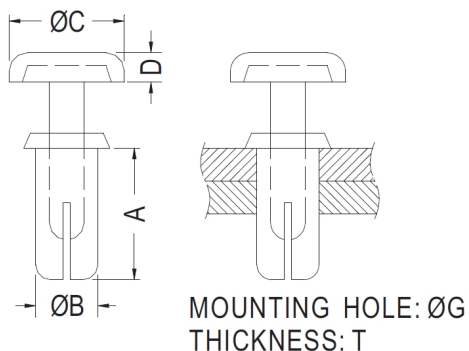
| PART NO | A | B | C | D | G | T | PACKAGE |
|---------|------|------|-----|-----|-----|------------|---------|
| NLR-009 | 3.2 | 2.0 | 4.2 | 1.2 | 2.0 | 1.3~2.0 | 2000 |
| NLR-011 | 4.5 | 3.2 | 6.3 | 1.7 | 3.2 | 1.5~3.0 | 1000 |
| NLR-013 | 3.2 | 2.6 | 5.0 | 1.7 | 2.6 | 1.0~2.0 | 1000 |
| NLR-015 | 4.2 | 2.6 | 5.0 | 1.7 | 2.6 | 2.0~3.0 | 1000 |
| NLR-017 | 4.8 | 2.6 | 5.0 | 1.4 | 2.6 | 2.5~3.4 | 1000 |
| NLR-019 | 5.5 | 2.6 | 5.0 | 1.4 | 2.6 | 3.0~4.3 | 1000 |
| NLR-020 | 3.6 | 3.0 | 6.3 | 1.7 | 3.0 | 1.0~2.0 | 1000 |
| NLR-021 | 24.0 | 2.85 | 6.0 | 1.7 | 2.8 | 18.5~19.5 | 1000 |
| NLR-022 | 3.6 | 3.0 | 6.3 | 1.7 | 3.0 | 1.0~2.0 | 1000 |
| NLR-023 | 4.5 | 3.0 | 6.3 | 1.7 | 3.0 | 2.0~3.0 | 1000 |
| NLR-024 | 5.5 | 3.0 | 6.3 | 1.7 | 3.0 | 3.0~3.5 | 1000 |
| NLR-025 | 6.0 | 3.0 | 6.3 | 1.7 | 3.0 | 3.5~4.5 | 1000 |
| NLR-026 | 6.5 | 3.0 | 6.3 | 1.7 | 3.0 | 4.0~4.5 | 1000 |
| NLR-027 | 7.5 | 3.0 | 6.3 | 1.7 | 3.0 | 5.0~6.0 | 1000 |
| NLR-028 | 8.1 | 3.0 | 6.3 | 1.7 | 3.0 | 5.5~6.5 | 1000 |
| NLR-029 | 9.1 | 3.0 | 6.3 | 1.7 | 3.0 | 6.5~7.5 | 1000 |
| NLR-030 | 10.0 | 3.0 | 6.3 | 1.7 | 3.0 | 7.5~8.5 | 1000 |
| NLR-031 | 13.2 | 3.0 | 6.3 | 1.7 | 3.0 | 10.0~11.0 | 1000 |
| NLR-033 | 15.5 | 3.0 | 6.2 | 1.7 | 3.0 | 11.5! 13.0 | 1000 |
| NLR-034 | 18.5 | 3.0 | 6.3 | 1.7 | 3.0 | 15.0~16.5 | 1000 |
| NLR-035 | 4.5 | 3.5 | 6.3 | 1.7 | 3.5 | 2.0~3.0 | 1000 |
| NLR-036 | 5.0 | 3.5 | 6.3 | 1.7 | 3.5 | 2.5~3.5 | 1000 |
| NLR-037 | 6.0 | 3.5 | 6.3 | 1.7 | 3.5 | 3.0~4.0 | 1000 |
| NLR-038 | 7.0 | 3.5 | 6.3 | 1.7 | 3.5 | 4.5~5.5 | 1000 |
| NLR-039 | 9.0 | 3.5 | 6.3 | 1.7 | 3.5 | 6.0~7.0 | 1000 |

尼龙铆钉 SNAP RIVET 铆钉

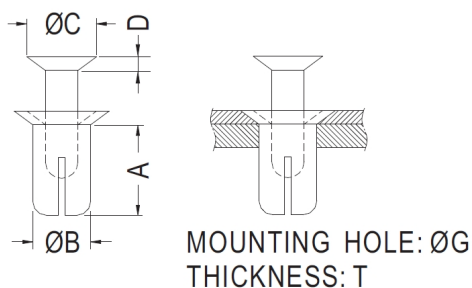


- ◆ MATERIAL : NYLON 66 (UL)
- ◆ FLAME CLASS : 94V-0/94V-2
- ◆ COLOR : NATURAL/BLACK
- ◆ UNIT: mm

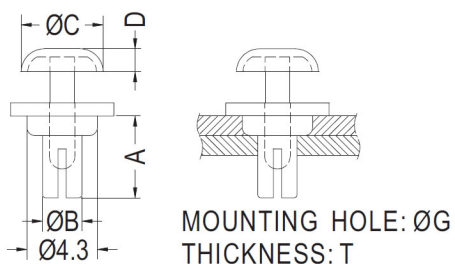
用途：尼龙铆钉，用于PC板、铁板零件固定，代替螺丝，省时不需工具，结合力强。



| PART NO | A | B | C | D | G | T | PACKAGE |
|---------|------|------|-----|-----|---------|-----------|---------|
| NLR-040 | 23.0 | 3.5 | 6.3 | 1.7 | 3.5 | 18.5~20.0 | 1000 |
| NLR-078 | 5.0 | 3.0 | 6.3 | 1.7 | 3.0~3.1 | 2.5~3.5 | 1000 |
| NLR-079 | 5.5 | 3.0 | 6.3 | 1.7 | 3.0 | 3.0~3.5 | 1000 |
| NLR-081 | 6.4 | 2.6 | 5.0 | 1.4 | 2.6~2.7 | 4.3~5.0 | 1000 |
| NLR-082 | 6.5 | 3.8 | 6.3 | 2.0 | 3.8 | 4.0~4.5 | 1000 |
| NLR-086 | 5.5 | 3.0 | 6.3 | 1.7 | 3.0 | 3.0~4.0 | 1000 |
| NLR-087 | 6.5 | 3.0 | 6.3 | 1.7 | 3.0 | 4.0~5.0 | 1000 |
| NLR-132 | 3.5 | 3.5 | 6.3 | 1.7 | 3.5 | 1.5~2.0 | 1000 |
| NLR-133 | 7.5 | 3.5 | 6.3 | 1.7 | 3.5 | 5.0~6.0 | 1000 |
| NLR-139 | 3.2 | 2.0 | 4.2 | 1.2 | 2.0 | 1.3~1.9 | 2000 |
| NLR-141 | 12.0 | 3.0 | 6.3 | 1.7 | 3.0~3.1 | 7.0~9.0 | 1000 |
| NLR-142 | 17.0 | 3.0 | 3.2 | 1.7 | 3.0~3.1 | 12.0~14.0 | 1000 |
| NLR-151 | 2.4 | 2.0 | 4.2 | 1.2 | 2.0 | 0.6~1.2 | 2000 |
| NLR-152 | 5.6 | 2.0 | 4.2 | 1.2 | 2.0 | 3.7~4.4 | 1000 |
| NLR-153 | 6.4 | 2.0 | 4.2 | 1.2 | 2.0 | 4.5~5.2 | 1000 |
| NLR-154 | 8.0 | 3.5 | 6.3 | 1.7 | 3.5 | 5.7~6.6 | 1000 |
| NLR-155 | 32.0 | 3.45 | 6.3 | 1.7 | 3.5 | 28.0 | 1000 |



| PART NO | A | B | C | D | G | T | PACKAGE |
|---------|------|-----|-----|-----|-----|-----------|---------|
| NLR-012 | 3.9 | 3.0 | 3.2 | 0.5 | 3.0 | 1.5~2.0 | 1000 |
| NLR-032 | 13.0 | 3.2 | 5.3 | 1.0 | 3.3 | 10.0~11.0 | 1000 |



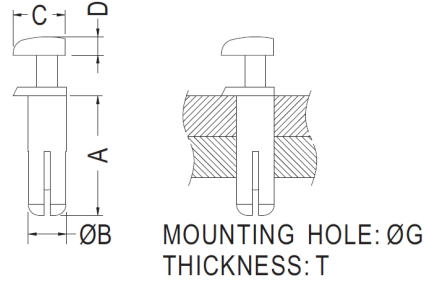
| PART NO | A | B | C | D | G | T | PACKAGE |
|---------|-----|-----|-----|-----|-----|---------|---------|
| NLR-140 | 5.0 | 2.4 | 5.0 | 1.4 | 2.4 | 2.2~3.2 | 1000 |

尼龙铆钉 SNAP RIVET 铆钉

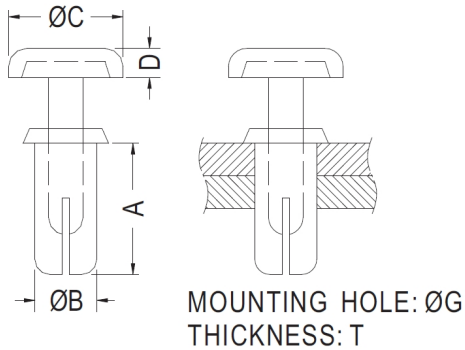


- ◆ MATERIAL : NYLON 66 (UL)
- ◆ FLAME CLASS : 94V-0/94V-2
- ◆ COLOR : NATURAL/BLACK
- ◆ UNIT: mm

用途：尼龙铆钉，用于PC板、铁板零件固定，代替螺丝，省时不需工具，结合力强。



| PART NO | A | B | C | D | G | T | PACKAGE |
|---------|------|-----|-----|-----|---------|---------|---------|
| NLR-131 | 11.0 | 6.5 | 4.9 | 1.7 | 3.5~3.6 | 6.5~7.5 | 1000 |



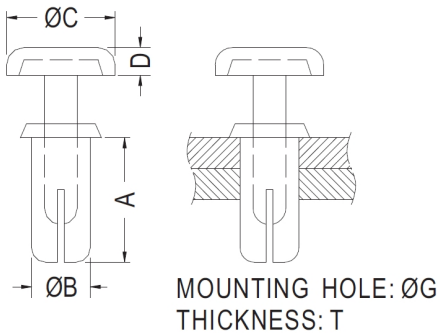
| PART NO | A | B | C | D | G | T | PACKAGE |
|---------|------|------|------|-----|---------|-----------|---------|
| NLR-016 | 6.0 | 6.0 | 12.0 | 2.5 | 6.0 | 2.5~4.0 | 1000 |
| NLR-041 | 5.0 | 4.0 | 7.8 | 1.9 | 4.1 | 2.5~3.5 | 1000 |
| NLR-042 | 6.1 | 4.0 | 7.8 | 1.9 | 4.0 | 3.5~4.5 | 1000 |
| NLR-044 | 7.1 | 4.0 | 8.0 | 2.0 | 4.0 | 4.5~5.5 | 1000 |
| NLR-046 | 8.1 | 4.0 | 8.0 | 2.0 | 4.0 | 5.5~6.5 | 1000 |
| NLR-048 | 9.0 | 4.0 | 8.0 | 2.0 | 4.0 | 6.5~7.5 | 1000 |
| NLR-049 | 10.0 | 4.0 | 8.0 | 2.0 | 4.0 | 7.5~8.5 | 1000 |
| NLR-051 | 12.0 | 4.0 | 8.0 | 2.0 | 4.0 | 9.5~10.5 | 1000 |
| NLR-053 | 13.7 | 4.0 | 8.0 | 2.0 | 4.0 | 11.0~12.0 | 1000 |
| NLR-054 | 15.3 | 4.0 | 8.0 | 2.0 | 4.0 | 11.5~13.0 | 1000 |
| NLR-055 | 20.0 | 4.0 | 8.0 | 2.0 | 4.0 | 15.0~17.0 | 500 |
| NLR-056 | 24.5 | 4.0 | 8.0 | 2.0 | 4.0 | 22.0~23.0 | 500 |
| NLR-057 | 4.6 | 5.0 | 8.9 | 2.2 | 5.0 | 1.5~2.5 | 1000 |
| NLR-059 | 5.5 | 5.0 | 8.9 | 2.0 | 5.0 | 2.5~3.5 | 1000 |
| NLR-060 | 6.5 | 5.0 | 8.69 | 2.2 | 5.0 | 3.5~4.5 | 1000 |
| NLR-061 | 7.5 | 5.0 | 8.9 | 2.2 | 5.0 | 4.5~5.5 | 1000 |
| NLR-062 | 8.4 | 5.0 | 8.9 | 2.2 | 5.0 | 5.5~6.5 | 1000 |
| NLR-063 | 8.0 | 6.0 | 12.0 | 3.0 | 6.0 | 4.5~6.0 | 1000 |
| NLR-080 | 4.6 | 4.0 | 7.8 | 1.9 | 4.0~4.1 | 2.5~3.5 | 1000 |
| NLR-083 | 9.5 | 5.0 | 8.9 | 2.1 | 5.0 | 5.5~7.5 | 1000 |
| NLR-084 | 10.5 | 5.0 | 8.9 | 2.1 | 5.0 | 6.5~8.5 | 1000 |
| NLR-135 | 10.5 | 4.95 | 10.0 | 2.1 | 5.0 | 6.5~8.5 | 1000 |
| NLR-143 | 15.5 | 4.0 | 8.0 | 2.0 | 4.0 | 11.5~13.0 | 1000 |
| NLR-144 | 5.0 | 4.3 | 7.8 | 1.9 | 4.3 | 2.5~3.5 | 1000 |
| NLR-145 | 10.5 | 6.0 | 12.0 | 3.0 | 6.1 | 7.5~8.5 | 1000 |

尼龙铆钉 SNAP RIVET 铆钉



- ◆ MATERIAL : NYLON 66 (UL)
- ◆ FLAME CLASS : 94V-0/94V-2
- ◆ COLOR : NATURAL/BLACK
- ◆ UNIT: mm

用途：尼龙铆钉，用于PC板、铁板零件固定，代替螺丝，省时不需工具，结合力强。

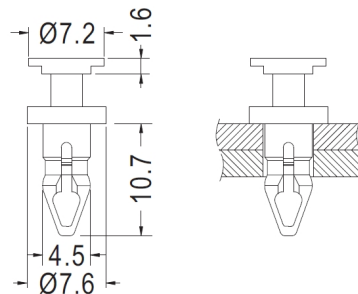


| PART NO | A | B | C | D | G | T | PACKAGE |
|---------|------|-----|-----|-----|-----|-----------|---------|
| NLR-014 | 5.5 | 4.0 | 5.8 | 0.7 | 4.0 | 2.0~3.0 | 1000 |
| NLR-043 | 6.1 | 4.0 | 7.5 | 1.1 | 4.0 | 3.0~4.0 | 1000 |
| NLR-045 | 7.0 | 4.0 | 6.4 | 0.8 | 4.0 | 3.5~5.0 | 1000 |
| NLR-047 | 8.2 | 4.0 | 7.5 | 1.1 | 4.0 | 5.5~6.5 | 1000 |
| NLR-050 | 10.0 | 4.0 | 6.8 | 1.5 | 4.0 | 7.5~8.5 | 1000 |
| NLR-052 | 14.5 | 4.0 | 6.4 | 1.0 | 4.0 | 10.0~11.0 | 1000 |
| NLR-058 | 7.0 | 5.0 | 8.5 | 2.5 | 5.0 | 3.5~4.5 | 1000 |
| NLR-085 | 7.2 | 4.0 | 7.5 | 1.1 | 4.0 | 3.5~5.0 | 1000 |

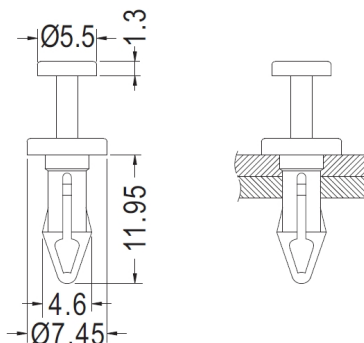


- ◆ MATERIAL : NYLON 66 (UL)
- ◆ FLAME CLASS : 94V-2/94V-0
- ◆ COLOR : BLACK/NATURAL
- ◆ UNIT: mm

用途：尼龙铆钉，用于CPU座与主板之固定。



| PART NO | PACKAGE |
|---------|---------|
| NLR-064 | 1000 |



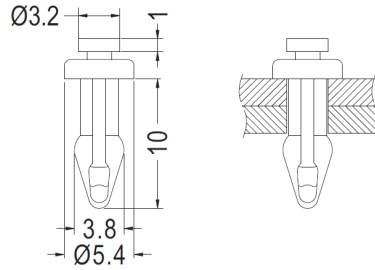
| PART NO | PACKAGE |
|---------|---------|
| NLR-065 | 1000 |

尼龙铆钉 SNAP RIVET 铆钉



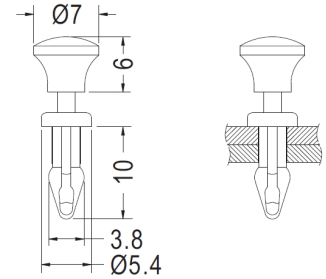
- ◆ MATERIAL : NYLON 66 (UL)
- ◆ FLAME CLASS : 94V-0/94V-2
- ◆ COLOR : NATURAL/BLACK
- ◆ UNIT: mm

用途：尼龙铆钉，用于CPU座与主板之固定。



MOUNTING HOLE Ø3.0
THICKNESS 4.4

| PART NO | PACKAGE |
|---------|---------|
| NLR-066 | 1000 |



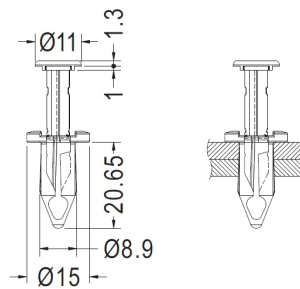
MOUNTING HOLE Ø3.0
THICKNESS 4.4

| PART NO | PACKAGE |
|---------|---------|
| NLR-097 | 1000 |



- ◆ MATERIAL : NYLON 66 (UL)
- ◆ FLAME CLASS : 94V-2/94V-0
- ◆ COLOR : BLACK/NATURAL
- ◆ UNIT: mm

用途：尼龙铆钉，用于CPU座或散热风扇与主板之固定。



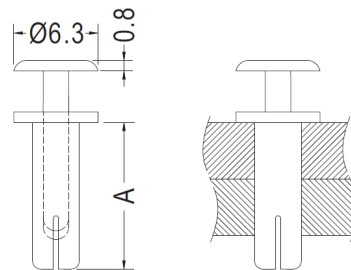
MOUNTING HOLE Ø8.0~Ø8.3
THICKNESS 3.0~8.0

| PART NO | PACKAGE |
|---------|---------|
| NLR-244 | 1000 |



- ◆ MATERIAL : NYLON 66 (UL)
- ◆ FLAME CLASS : 94V-2/94V-0
- ◆ COLOR : BLACK
- ◆ UNIT: mm

用途：尼龙铆钉，用于PC板与机板间固定，省时方便。



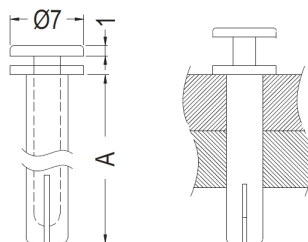
MOUNTING HOLE Ø3.5
THICKNESS: T

| PART NO | A | T | PACKAGE |
|---------|------|------|---------|
| NLR-067 | 11.0 | 8.0 | 1000 |
| NLR-068 | 65.0 | 62.0 | 500 |
| NLR-091 | 37.0 | 34.0 | 1000 |
| NLR-146 | 29.0 | 25.0 | 1000 |
| NLR-157 | 62.3 | 58.0 | 500 |

尼龙铆钉 SNAP RIVET 铆钉



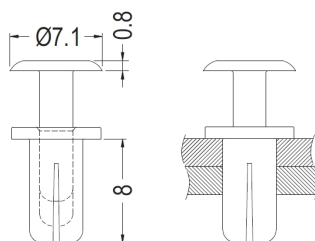
- ◆ MATERIAL : NYLON 66 (UL)
- ◆ FLAME CLASS : 94V-0/94V-2
- ◆ COLOR : BLACK
- ◆ UNIT: mm



MOUNTING HOLE Ø4.0

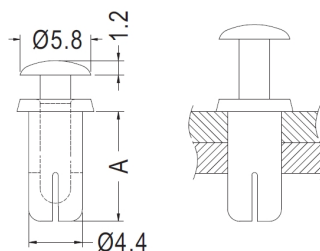
用途：尼龙铆钉，用于计算机风扇固定。

| PART NO | A | PACKAGE |
|---------|------|---------|
| NLR-069 | 28.0 | 500 |
| NLR-070 | 30.0 | 500 |
| NLR-071 | 31.0 | 500 |



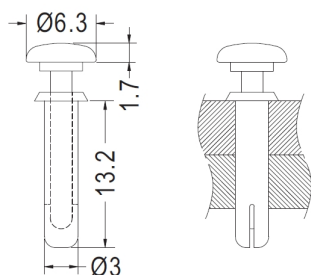
MOUNTING HOLE Ø4.2
THICKNESS 5.5~6.5

| PART NO | PACKAGE |
|---------|---------|
| NLR-072 | 1000 |



MOUNTING HOLE Ø4.5
THICKNESS: T

| PART NO | A | T | PACKAGE |
|---------|------|------|---------|
| NLR-073 | 10.0 | 6.2 | 1000 |
| NLR-092 | 8.0 | 4.2 | 1000 |
| NLR-093 | 9.0 | 5.2 | 1000 |
| NLR-094 | 12.0 | 8.2 | 1000 |
| NLR-095 | 14.0 | 10.2 | 1000 |
| NLR-096 | 16.0 | 12.2 | 1000 |



MOUNTING HOLE Ø3.0
THICKNESS 10.0~11.0

用途：尼龙铆钉，用于计算机风扇固定用于PC板与机板间固定，省时方便。

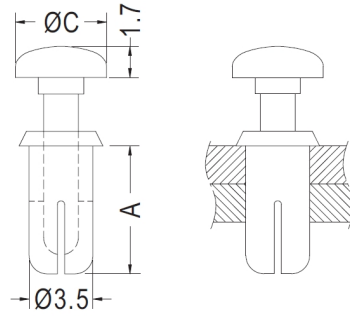
| PART NO | PACKAGE |
|---------|---------|
| NLR-074 | 1000 |

尼龙铆钉 SNAP RIVET 铆钉



- ◆ MATERIAL : NYLON 66 (UL)
- ◆ FLAME CLASS : 94V-0/94V-2
- ◆ COLOR : BLACK
- ◆ UNIT: mm

用途：尼龙铆钉，用于PC板与机板间固定，省时方便。



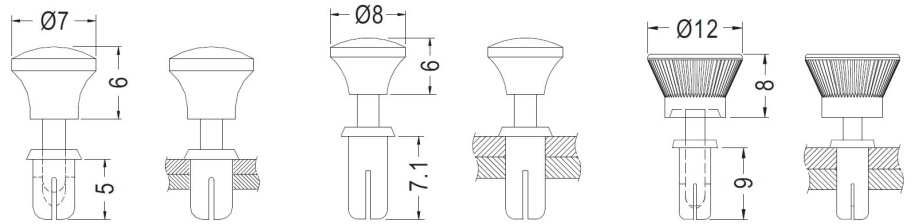
MOUNTING HOLE: ØG
THICKNESS: T

| PART NO | A | C | G | T | PACKAGE |
|---------|-----|-----|---------|---------|---------|
| NLR-075 | 7.0 | 5.0 | 3.5~3.6 | 4.5~5.5 | 1000 |
| NLR-090 | 4.5 | 6.3 | 3.5 | 1.5~3.0 | 1000 |



- ◆ MATERIAL : NYLON 66 (UL)
- ◆ FLAME CLASS : 94V-2/94V-0
- ◆ COLOR : BLACK
- ◆ UNIT: mm

用途：尼龙铆钉，用于PC板与机板间固定，省时方便。



CHASSIS Ø3.5
THICKNESS 2.5~3.5

CHASSIS Ø4.1
THICKNESS 4.5~5.5

CHASSIS Ø4.1~Ø4.2
THICKNESS 6.5~7.5

| PART NO | PACKAGE |
|---------|---------|
| NLR-089 | 1000 |

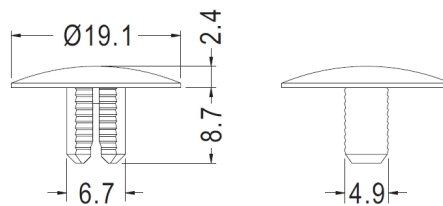
| PART NO | PACKAGE |
|---------|---------|
| NLR-076 | 1000 |

| PART NO | PACKAGE |
|---------|---------|
| NLR-077 | 1000 |



- ◆ MATERIAL : NYLON 66 (UL)
- ◆ FLAME CLASS : 94V-2/94V-0
- ◆ COLOR : BLACK/NATURAL
- ◆ UNIT: mm

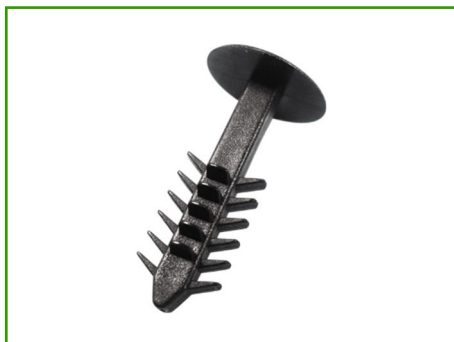
用途：尼龙铆钉，用于PC板与机板间固定，省时方便。



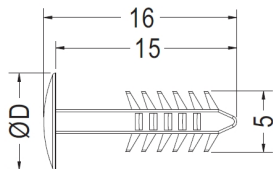
MOUNTING HOLE Ø7.1
ASSEMBLED THICKNESS 8.8~12.8

| PART NO | PACKAGE |
|---------|---------|
| NLR-100 | 1000 |

尼龙铆钉 MOUNTING BUTTON 铆钉



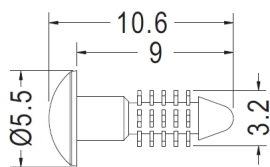
- ◆ MATERIAL : NYLON 66 (UL)
- ◆ FLAME CLASS : 94V-0/94V-2
- ◆ COLOR : BLACK/NATURAL
- ◆ UNIT: mm



MOUNTING HOLE Ø4.0
THICKNESS 5.7~10.7

用途：尼龙铆钉，用于木板、铁板、PC板...等板子间的结合固定。

| PART NO | D | PACKAGE |
|---------|------|---------|
| NLR-101 | 8.0 | 1000 |
| NLR-160 | 10.0 | 1000 |

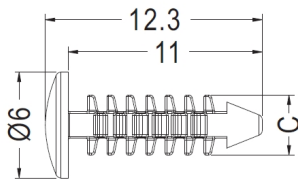


MOUNTING HOLE Ø3.0

| PART NO | PACKAGE |
|---------|---------|
| NLR-263 | 1000 |



- ◆ MATERIAL : NYLON 6 (UL)
- ◆ FLAME CLASS : 94V-2
- ◆ COLOR : BLACK/NATURAL
- ◆ UNIT: mm



MOUNTING HOLE: ØG
THICKNESS 1.5~8.0

用途：尼龙铆钉，用于木板、铁板、PC板...等板子间的结合固定。

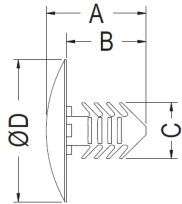
| PART NO | C | G | PACKAGE |
|---------|-----|---------|---------|
| NLR-112 | 3.4 | 3.0~3.3 | 1000 |
| NLR-113 | 3.3 | 2.7~3.3 | 1000 |

尼龙铆钉 MOUNTING BUTTON 铆钉

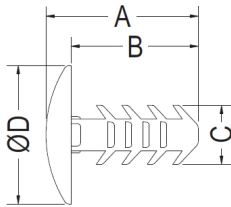


- ◆ MATERIAL : NYLON 66 (UL)
- ◆ FLAME CLASS : 94V-0/94V-2
- ◆ COLOR : BLACK/NATURAL
- ◆ UNIT: mm

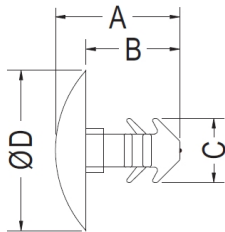
用途：尼龙铆钉，用于木板、铁板、PC板...等板子间的结合固定。



MOUNTING HOLE: ØG
THICKNESS: T



NLR-167 NLR-171 NLR-233



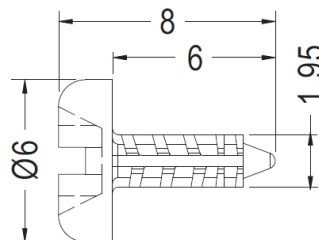
NLR-161 NLR-166

| PART NO | A | B | C | D | G | T | PACKAGE |
|---------|------|------|------|------|------|-----------|---------|
| NLR-111 | 22.4 | 19.7 | 5.8 | 22.4 | 7.9 | 1.6~15.9 | 1000 |
| NLR-148 | 17.2 | 15.2 | 5.2 | 12.7 | 4.8 | 1.6~12.7 | 1000 |
| NLR-161 | 6.5 | 4.9 | 3.4 | 8.4 | 3.0 | 1.6~3.0 | 1000 |
| NLR-162 | 13.2 | 11.6 | 3.7 | 8.7 | 3.2 | 1.6~9.5 | 1000 |
| NLR-163 | 21.0 | 19.0 | 5.25 | 8.0 | 4.8 | 2.1~15.9 | 1000 |
| NLR-164 | 20.0 | 17.5 | 10.2 | 25.4 | 9.5 | 1.6~12.7 | 1000 |
| NLR-165 | 12.0 | 9.5 | 5.8 | 15.9 | 5.25 | 1.57~6.35 | 1000 |
| NLR-166 | 6.9 | 5.3 | 3.7 | 8.7 | 3.2 | 1.6~3.2 | 2000 |
| NLR-167 | 9.2 | 7.6 | 3.4 | 8.4 | 3.0 | 1.6~6.0 | 1000 |
| NLR-168 | 10.8 | 8.8 | 5.2 | 12.7 | 4.8 | 1.6~6.4 | 1000 |
| NLR-169 | 13.3 | 11.7 | 3.45 | 8.4 | 3.0 | 1.6~10.0 | 2000 |
| NLR-170 | 13.8 | 11.3 | 10.3 | 25.4 | 9.5 | 1.6~6.4 | 1000 |
| NLR-171 | 10.3 | 8.3 | 4.6 | 11.2 | 4.0 | 1.6~6.0 | 1000 |
| NLR-172 | 14.3 | 12.3 | 5.3 | 14.0 | 5.0 | 1.6~10.0 | 1000 |
| NLR-173 | 11.3 | 9.3 | 6.4 | 16.8 | 6.0 | 1.6~6.0 | 1000 |
| NLR-174 | 15.9 | 13.4 | 8.5 | 22.2 | 7.9 | 1.6~9.5 | 1000 |
| NLR-175 | 15.6 | 13.1 | 7.8 | 20.0 | 7.1 | 1.6~9.5 | 1000 |
| NLR-233 | 9.6 | 8.0 | 3.7 | 8.7 | 3.2 | 1.57~6.35 | 1000 |
| NLR-234 | 22.4 | 19.9 | 8.5 | 12.5 | 7.9 | 1.6~15.9 | 1000 |
| NLR-235 | 12.5 | 10.0 | 7.0 | 17.8 | 6.35 | 1.57~6.35 | 1000 |
| NLR-316 | 28.4 | 25.9 | 7.8 | 20.0 | 7.15 | 1.6~22.3 | 1000 |



- ◆ MATERIAL : NYLON 66 (UL)
- ◆ FLAME CLASS : 94V-2/94V-0
- ◆ COLOR : BLACK/NATURAL
- ◆ UNIT: mm

用途：尼龙铆钉，用于PC板与机板间固定，省时方便。



MOUNTING HOLE Ø2.2

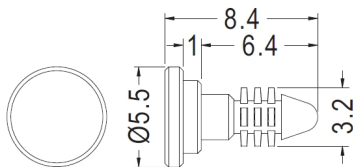
| PART NO | PACKAGE |
|---------|---------|
| NLR-103 | 2000 |

尼龙铆钉 MOUNTING BUTTON 铆钉



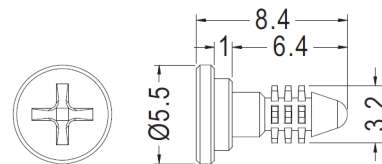
- ◆ MATERIAL : NYLON 66 (UL)
- ◆ FLAME CLASS : 94V-0/94V-2
- ◆ COLOR : BLACK/NATURAL
- ◆ UNIT: mm

用途：尼龙铆钉，用于PC板与机板间固定，省时方便。



MOUNTING HOLE Ø3.0

| PART NO | PACKAGE |
|---------|---------|
| NLR-104 | 2000 |



MOUNTING HOLE Ø3.0

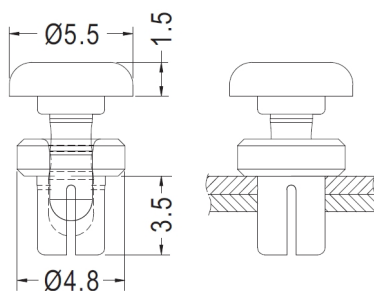
| PART NO | PACKAGE |
|---------|---------|
| NLR-105 | 2000 |

尼龙铆钉 SNAP RIVET 铆钉



- ◆ MATERIAL : NYLON 66 (UL)
- ◆ FLAME CLASS : 94V-2/94V-0
- ◆ COLOR : BLACK
- ◆ UNIT: mm

用途：尼龙铆钉，用于PC板与机板间固定，省时方便。



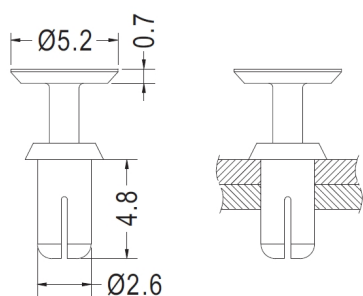
MOUNTING HOLE Ø3.0
THICKNESS 1.6

| PART NO | PACKAGE |
|---------|---------|
| NLR-102 | 1000 |



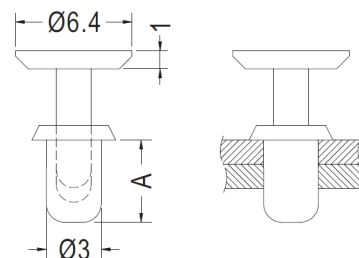
- ◆ MATERIAL : NYLON 66 (UL)
- ◆ FLAME CLASS : 94V-2
- ◆ COLOR : BLACK/NATURAL
- ◆ UNIT: mm

用途：尼龙铆钉，用于木板、铁板、PC板...等板子间的结合固定。



MOUNTING HOLE Ø2.6~Ø2.7
THICKNESS 2.5~3.4

| PART NO | PACKAGE |
|---------|---------|
| NLR-156 | 1000 |



MOUNTING HOLE Ø3.1~Ø3.2
THICKNESS: T

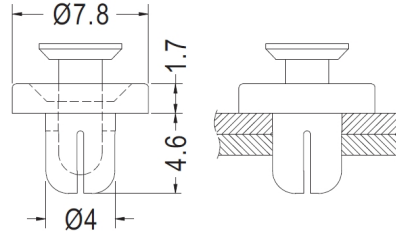
| PART NO | C | G | PACKAGE |
|---------|-----|---------|---------|
| NLR-107 | 5.5 | 3.0~4.0 | 1000 |
| NLR-108 | 4.5 | 2.0~3.0 | 1000 |

尼龙铆钉 SNAP RIVET 铆钉



- ◆ MATERIAL : NYLON 66 (UL)
- ◆ FLAME CLASS : 94V-0/94V-2
- ◆ COLOR : BLACK
- ◆ UNIT: mm

用途：尼龙铆钉，用于PC板与机板间固定，省时方便。



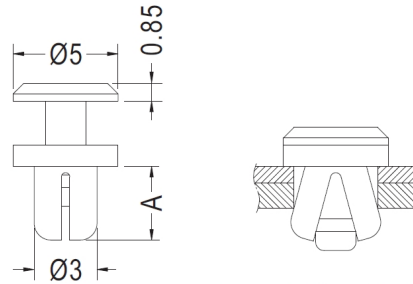
MOUNTING HOLE Ø4.0
THICKNESS 1.8~2.5

| PART NO | PACKAGE |
|---------|---------|
| NLR-106 | 1000 |



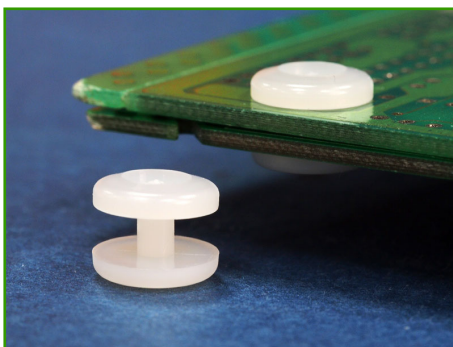
- ◆ MATERIAL : NYLON 66 (UL)
- ◆ FLAME CLASS : 94V-2/94V-0
- ◆ COLOR : BLACK/NATURAL
- ◆ UNIT: mm

用途：尼龙铆钉，用于计算机风扇的固定。



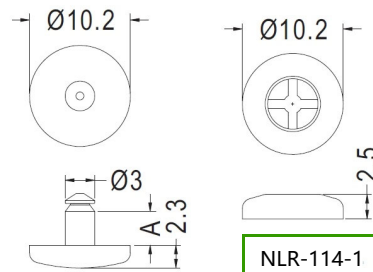
MOUNTING HOLE Ø3.0
THICKNESS: T

| PART NO | A | T | PACKAGE |
|---------|-----|---------|---------|
| NLR-109 | 4.0 | 1.5~2.5 | 1000 |
| NLR-110 | 3.5 | 1.0~2.0 | 1000 |

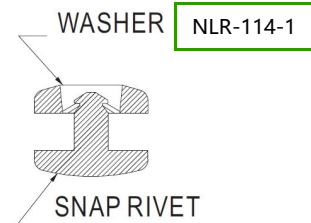


- ◆ MATERIAL : NYLON 66 (UL)
- ◆ FLAME CLASS : 94V-2/94V-0
- ◆ COLOR : BLACK/NATURAL
- ◆ UNIT: mm

用途：尼龙铆钉，用于PC板、铁板、书本间固定，结合力强，搭配NLR-114-1使用。



TO FIT IN Ø3.2 HOLE



THICKNESS: T
組裝示意圖

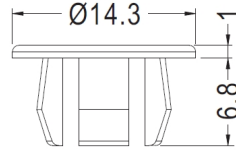
| PART NO | A | T | PACKAGE |
|---------|-----|------|---------|
| NLR-114 | 1.6 | 0.76 | 1000 |
| NLR-115 | 2.4 | 1.57 | 1000 |
| NLR-116 | 3.3 | 2.54 | 1000 |
| NLR-117 | 4.0 | 3.18 | 1000 |
| NLR-118 | 5.5 | 4.75 | 1000 |
| NLR-119 | 7.1 | 6.35 | 1000 |

尼龙铆钉 MOUNTING BUTTON 铆钉

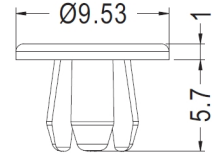


- ◆ MATERIAL : NYLON 66 (UL)
- ◆ FLAME CLASS : 94V-0/94V-2
- ◆ COLOR : BLACK/NATURAL
- ◆ UNIT: mm

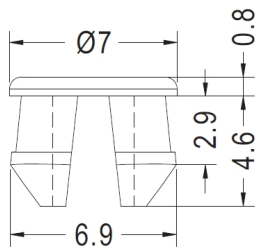
用途：尼龙铆钉，用于PC板与机板间固定，省时方便。



MOUNTING HOLE Ø9.5
THICKNESS 0.8~3.6

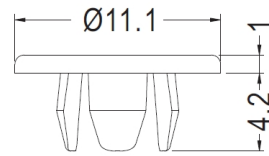


MOUNTING HOLE Ø4.8
THICKNESS 0.8~3.6



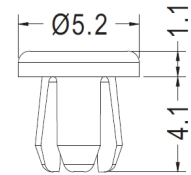
CHASSIS Ø6.2
THICKNESS 2.4

| PART NO | PACKAGE |
|---------|---------|
| NLR-204 | 2000 |



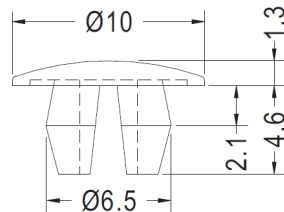
MOUNTING HOLE Ø6.35
THICKNESS 0.79~1.58

| PART NO | PACKAGE |
|---------|---------|
| NLR-122 | 2000 |



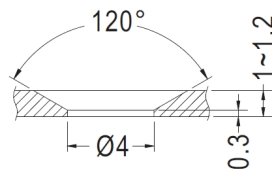
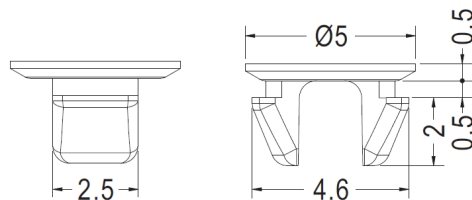
MOUNTING HOLE Ø3.2
THICKNESS 0.8~2.4

| PART NO | PACKAGE |
|---------|---------|
| NLR-159 | 2000 |



CHASSIS Ø6.0
THICKNESS 1.2

| PART NO | PACKAGE |
|---------|---------|
| NLR-203 | 2000 |



MOUNTING HOLE Ø4.0
CHASSIS THICKNESS 1.0~1.2

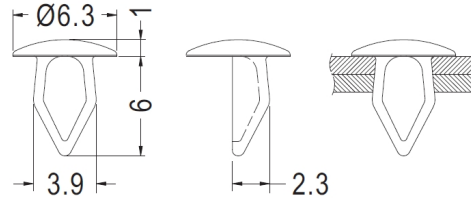
| PART NO | PACKAGE |
|---------|---------|
| NLR-230 | 1000 |

尼龙铆钉 MOUNTING BUTTON 铆钉



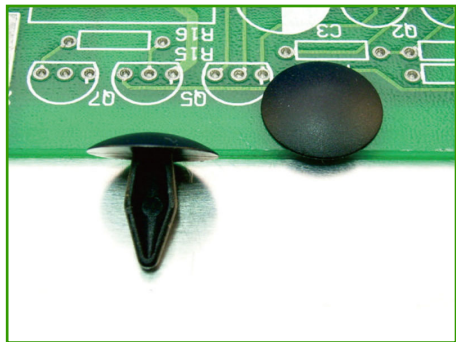
- ◆ MATERIAL : PC+ABS (UL)
- ◆ FLAME CLASS : 94V-0
- ◆ COLOR : BLACK/WHITE/NATURAL
- ◆ UNIT: mm

用途：尼龙铆钉，用于PC板与机板间固定，省时方便。



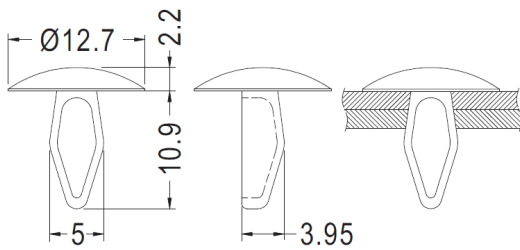
MOUNTING HOLE Ø3.5
THICKNESS 0.8~2.0

| PART NO | PACKAGE |
|---------|---------|
| NLR-123 | 2000 |



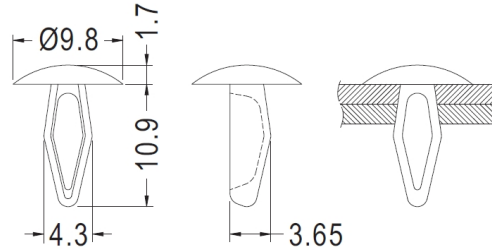
- ◆ MATERIAL : NYLON 66 (UL)
- ◆ FLAME CLASS : 94V-2/94V-0
- ◆ COLOR : BLACK/NATURAL
- ◆ UNIT: mm

用途：尼龙铆钉，用于PC板与机板间固定，省时方便。



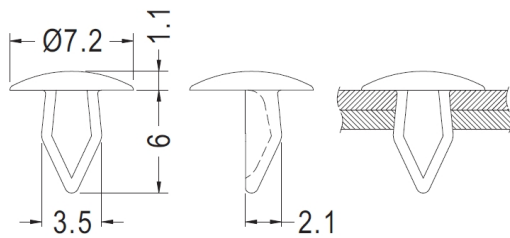
CHASSIS Ø4.0
THICKNESS 2.5~3.5

| PART NO | PACKAGE |
|---------|---------|
| NLR-251 | 1000 |



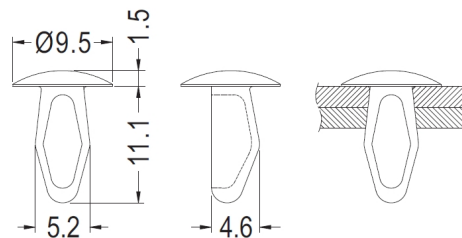
CHASSIS Ø3.9~Ø4.05
THICKNESS 2.1~3.7

| PART NO | PACKAGE |
|---------|---------|
| NLR-252 | 1000 |



CHASSIS Ø3.0~Ø3.2
THICKNESS 0.8~2.0

| PART NO | PACKAGE |
|---------|---------|
| NLR-254 | 1000 |



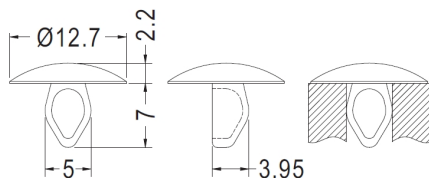
CHASSIS Ø4.7~Ø4.8
THICKNESS 2.5~4.0

| PART NO | PACKAGE |
|---------|---------|
| NLR-257 | 1000 |

尼龙铆钉 MOUNTING BUTTON 铆钉



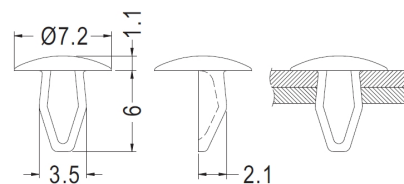
- ◆ MATERIAL : NYLON 66 (UL)
- ◆ FLAME CLASS : 94V-0/94V-2
- ◆ COLOR : BLACK/NATURAL
- ◆ UNIT: mm



CHASSIS Ø4.8

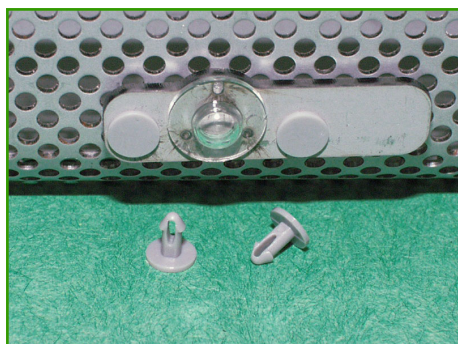
| PART NO | PACKAGE |
|---------|---------|
| NLR-296 | 2000 |

用途：尼龙铆钉，用于PC板与机板间固定，省时方便。

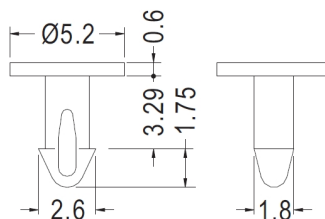


CHASSIS Ø3.0~Ø3.2
THICKNESS 0.8~2.0

| PART NO | PACKAGE |
|---------|---------|
| NLR-310 | 2000 |



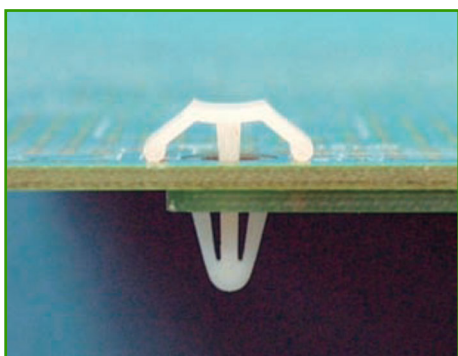
- ◆ MATERIAL : NYLON 66 (UL)
- ◆ FLAME CLASS : 94V-0/94V-2
- ◆ COLOR : BLACK/NATURAL/GRAY
- ◆ UNIT: mm



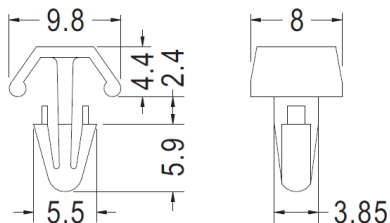
CHASSIS Ø2.0
THICKNESS 3.2

| PART NO | PACKAGE |
|---------|---------|
| NLR-178 | 2000 |

用途：尼龙铆钉，用于PC板与机板间固定，省时方便。



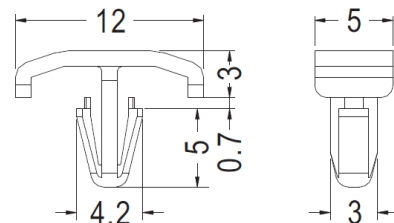
- ◆ MATERIAL : NYLON 66 (UL)
- ◆ FLAME CLASS : 94V-0/94V-2
- ◆ COLOR : BLACK/NATURAL
- ◆ UNIT: mm



CHASSIS Ø4.0
THICKNESS 2.5~3.2

| PART NO | PACKAGE |
|---------|---------|
| NLR-247 | 1000 |

用途：尼龙铆钉，用于PC板与机板间固定，省时方便。



CHASSIS Ø3.2
THICKNESS 0.8~2.3

| PART NO | PACKAGE |
|---------|---------|
| NLR-248 | 1000 |

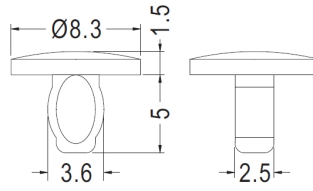
尼龙铆钉 MOUNTING BUTTON 铆钉



| PART NO | PACKAGE |
|---------|---------|
| NLR-258 | 1000 |

- ◆ MATERIAL : NYLON 66 (UL)
- ◆ FLAME CLASS : 94V-2/94V-0
- ◆ COLOR : BLACK/NATURAL
- ◆ UNIT: mm

用途：尼龙铆钉，用于PC板与机板间固定，省时方便。



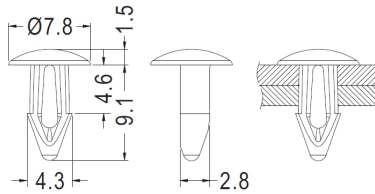
CHASSIS Ø3.2~Ø3.5



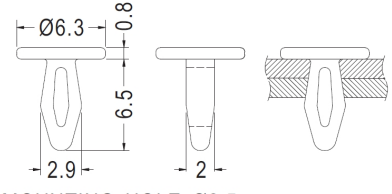
用途：尼龙铆钉，用于PC板与机板间固定，省时方便。

- ◆ MATERIAL : NYLON 66 / PBT(UL)
- ◆ FLAME CLASS : 94V-2/94V-0
- ◆ COLOR : BLACK/NATURAL
- ◆ UNIT: mm

- ◆ MATERIAL : NYLON 66 (UL)
- ◆ FLAME CLASS : 94V-2/94V-0
- ◆ COLOR : BLACK/NATURAL
- ◆ UNIT: mm



HOLE IN P.C.B Ø3.6



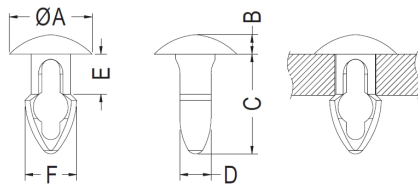
MOUNTING HOLE Ø2.5
THICKNESS 2.0~2.5

| PART NO | PACKAGE |
|---------|---------|
| NLR-190 | 2000 |

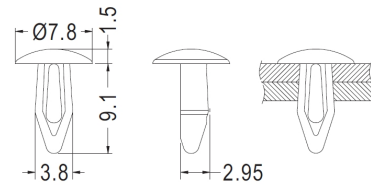
| PART NO | PACKAGE |
|---------|---------|
| NLR-295 | 2000 |

- ◆ MATERIAL : NYLON 66 (UL)
- ◆ FLAME CLASS : 94V-2/94V-0
- ◆ COLOR : BLACK/NATURAL
- ◆ UNIT: mm

- ◆ MATERIAL : PBT (UL)
- ◆ FLAME CLASS : 94V-0
- ◆ COLOR : NATURAL
- ◆ UNIT: mm



CHASSIS: ØG
THICKNESS: T

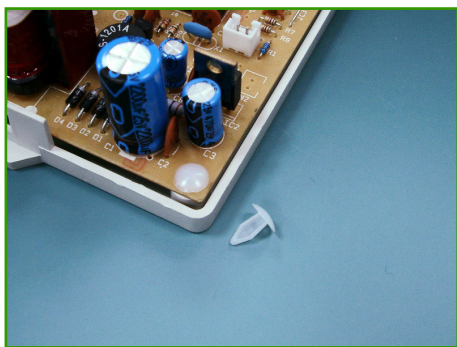


CHASSIS Ø3.5
THICKNESS 3.5~4.3

| PART NO | A | B | C | D | F | G | T | PACKAGE |
|---------|------|-------|-------|------|------|------|------|---------|
| NLR-302 | 6.4 | 1.5 | 7.7 | 2.4 | 4.0 | 3.17 | 3.17 | 2000 |
| NLR-313 | 7.93 | 1.57 | 9.53 | 2.6 | 5.1 | 4.0 | 4.0 | 2000 |
| NLR-321 | 6.35 | 41.57 | 6.95 | 2.45 | 4.2 | 3.17 | 2.36 | 2000 |
| NLR-322 | 6.35 | 1.57 | 8.6 | 2.5 | 4.2 | 3.17 | 4.0 | 2000 |
| NLR-323 | 8.0 | 1.57 | 10.43 | 4.4 | 6.05 | 4.75 | 3.18 | 2000 |
| NLR-324 | 8.0 | 1.57 | 11.63 | 4.4 | 6.05 | 4.75 | 4.75 | 2000 |
| NLR-325 | 8.0 | 1.57 | 13.43 | 4.4 | 6.05 | 4.75 | 6.35 | 2000 |

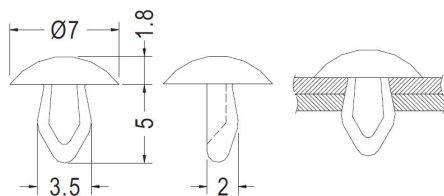
| PART NO | PACKAGE |
|---------|---------|
| NLR-221 | 2000 |

尼龙铆钉 MOUNTING BUTTON 铆钉



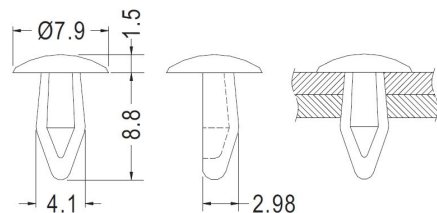
- ◆ MATERIAL : NYLON 66 (UL)
- ◆ FLAME CLASS : 94V-0/94V-2
- ◆ COLOR : BLACK/NATURAL
- ◆ UNIT: mm

用途：尼龙铆钉，用于PC板与机板间固定，省时方便。



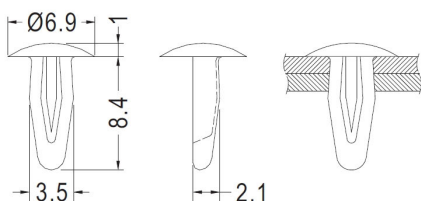
CHASSIS Ø3.15~Ø3.2
THICKNESS 1.6~1.9

| PART NO | PACKAGE |
|---------|---------|
| NLR-191 | 2000 |



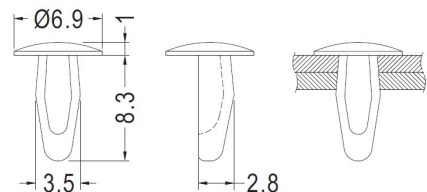
CHASSIS Ø3.5~Ø3.7
THICKNESS 3.5~4.0

| PART NO | PACKAGE |
|---------|---------|
| NLR-192 | 2000 |



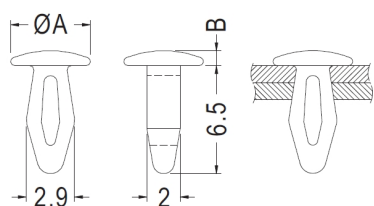
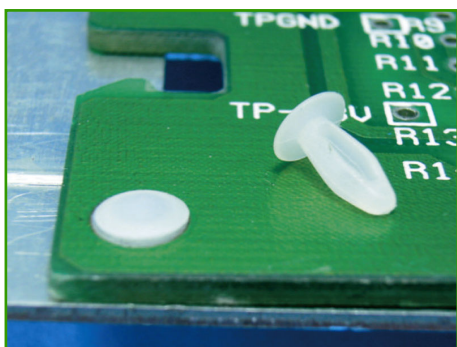
CHASSIS Ø3.1~Ø3.2
THICKNESS 2.0~2.5

| PART NO | PACKAGE |
|---------|---------|
| NLR-193 | 2000 |



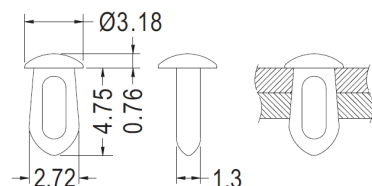
CHASSIS Ø3.1~Ø3.2
THICKNESS 2.0~2.5

| PART NO | PACKAGE |
|---------|---------|
| NLR-194 | 2000 |



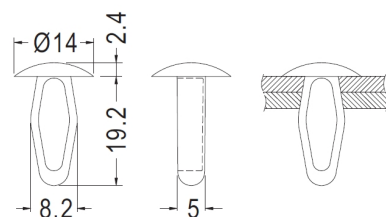
CHASSIS Ø2.5
THICKNESS 2.0~2.5

| PART NO | A | B | PACKAGE |
|---------|------|------|---------|
| NLR-249 | 4.8 | 0.9 | 1000 |
| NLR-250 | 4.75 | 0.95 | 1000 |



CHASSIS Ø2.16~Ø2.29
THICKNESS 0.81~2.72

| PART NO | PACKAGE |
|---------|---------|
| NLR-301 | 1000 |



CHASSIS Ø6.4
THICKNESS 5.0

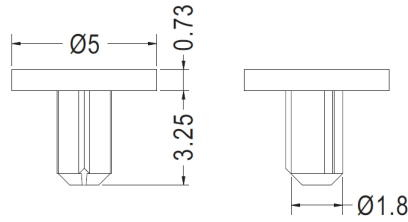
| PART NO | PACKAGE |
|---------|---------|
| NLR-300 | 1000 |

尼龙铆钉 MOUNTING BUTTON 铆钉



- ◆ MATERIAL : PC+ABS (UL)
- ◆ FLAME CLASS : 94V-2/94V-0
- ◆ COLOR : BLACK/GRAY
- ◆ UNIT: mm

用途：尼龙铆钉，用于螺丝孔的塞头。



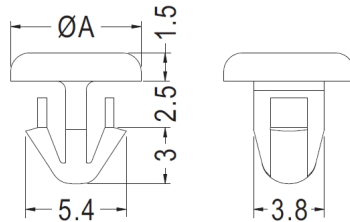
MOUNTING HOLE Ø2.0
THICKNESS Ø1.8~Ø2.0

| PART NO | PACKAGE |
|---------|---------|
| NLR-253 | 2000 |



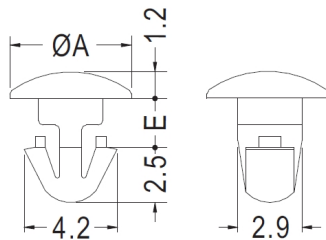
- ◆ MATERIAL : NYLON 66 (UL)
- ◆ FLAME CLASS : 94V-2/94V-0
- ◆ COLOR : BLACK/NATURAL
- ◆ UNIT: mm

用途：尼龙铆钉，用于PC板与机板间固定，省时方便。



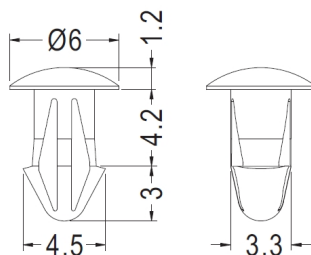
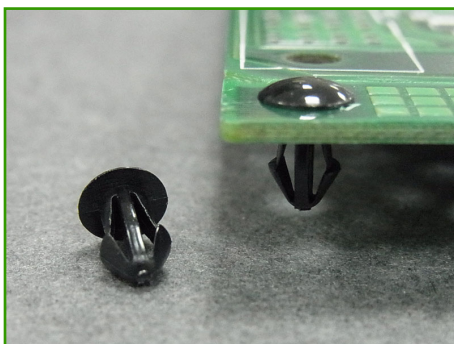
CHASSIS Ø4.0
THICKNESS 2.2

| PART NO | A | PACKAGE |
|---------|-----|---------|
| NLR-255 | 7.0 | 1000 |
| NLR-303 | 8.0 | 1000 |



P.C.B Ø3.0
THICKNESS: T

| PART NO | A | E | T | PACKAGE |
|---------|-----|-----|-----|---------|
| NLR-259 | 5.5 | 2.2 | 2.0 | 2000 |
| NLR-260 | 6.4 | 2.5 | 2.4 | 2000 |
| NLR-261 | 6.4 | 3.0 | 2.8 | 2000 |
| NLR-304 | 5.5 | 3.7 | 3.5 | 2000 |



P.C.B Ø3.5

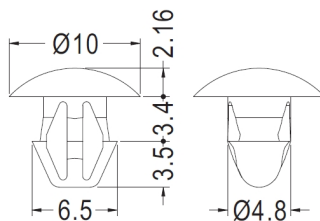
| PART NO | PACKAGE |
|---------|---------|
| NLR-256 | 1000 |

尼龙铆钉 MOUNTING BUTTON 铆钉



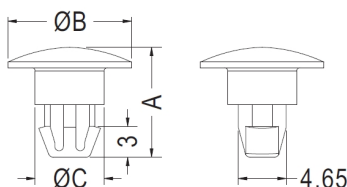
- ◆ MATERIAL : NYLON 66 (UL)
- ◆ FLAME CLASS : 94V-0/94V-2
- ◆ COLOR : BLACK/NATURAL
- ◆ UNIT: mm

用途：尼龙铆钉，用于PC板与机板间固定，省时方便。



HOLE Ø5.0~Ø5.2
THICKNESS 3.2

| PART NO | PACKAGE |
|---------|---------|
| NLR-228 | 1000 |



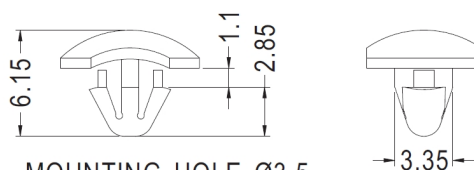
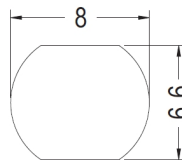
HOLE Ø4.8
THICKNESS: T

| PART NO | A | B | C | T | PACKAGE |
|---------|------|------|-----|-----|---------|
| NLR-279 | 10.7 | 12.0 | 6.7 | 2.0 | 1000 |
| NLR-280 | 11.1 | 12.0 | 6.7 | 2.0 | 1000 |
| NLR-281 | 11.2 | 12.0 | 6.7 | 2.4 | 1000 |
| NLR-282 | 11.1 | 10.0 | 7.3 | 2.0 | 1000 |
| NLR-283 | 12.8 | 12.0 | 6.7 | 4.0 | 1000 |



- ◆ MATERIAL : NYLON 66 (UL)
- ◆ FLAME CLASS : 94V-2/94V-0
- ◆ COLOR : BLACK/NATURAL/WHITE
- ◆ UNIT: mm

用途：尼龙铆钉，装于机壳上，避免使用者不当自行拆机。



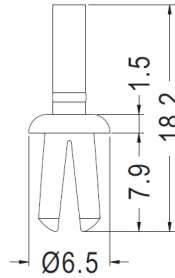
MOUNTING HOLE Ø3.5
THICKNESS 1.2~1.4

| PART NO | PACKAGE |
|---------|---------|
| NLR-314 | 1000 |

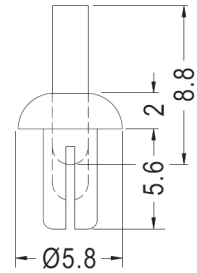
尼龙铆钉 SNAP RIVET 铆钉

用途：尼龙铆钉，用于装配的孔或机板间之固定，敲入后可牢固于物件上。

- ◆ MATERIAL : NYLON 66 (UL)
- ◆ FLAME CLASS : 94V-2/94V-0
- ◆ COLOR : BLACK/NATURAL/WHITE
- ◆ UNIT: mm



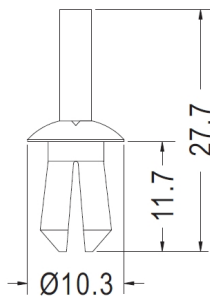
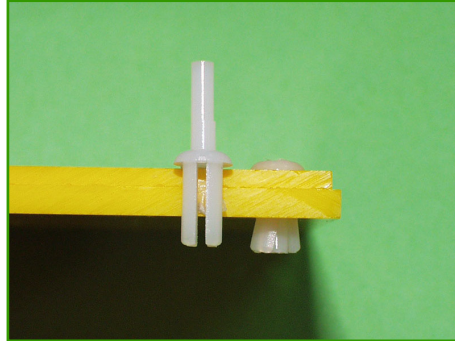
MOUNTING HOLE Ø4.0
THICKNESS 1.5~6.0



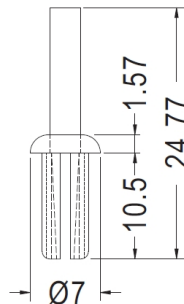
CHASSIS Ø3.0
THICKNESS 3.0

| PART NO | PACKAGE |
|---------|---------|
| NLR-124 | 1000 |

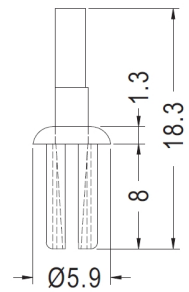
| PART NO | PACKAGE |
|---------|---------|
| NLR-269 | 1000 |



CHASSIS Ø6.0
THICKNESS 6.0



CHASSIS Ø4.6~Ø4.8
THICKNESS 6.5



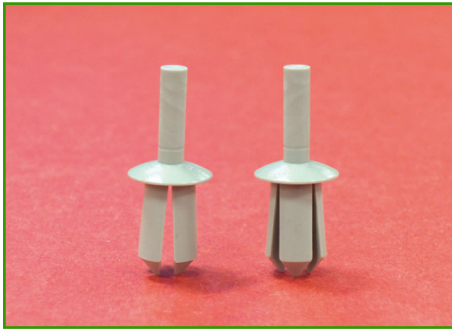
CHASSIS Ø4.0
THICKNESS 4.0

| PART NO | PACKAGE |
|---------|---------|
| NLR-273 | 1000 |

| PART NO | PACKAGE |
|---------|---------|
| NLR-270 | 1000 |

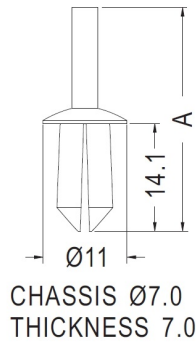
| PART NO | PACKAGE |
|---------|---------|
| NLR-271 | 1000 |

尼龙铆钉 SNAP RIVET 铆钉

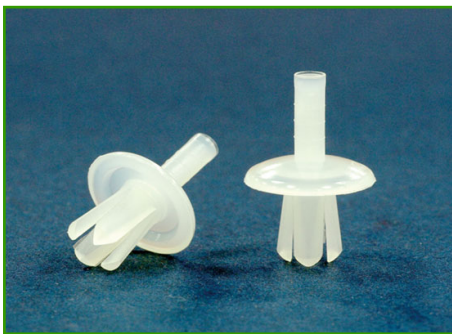


- ◆ MATERIAL : PE
- ◆ COLOR : GRAY
- ◆ UNIT: mm

用途：尼龙铆钉，用于装配的孔或机板间之固定，敲入后可牢固于物件上。

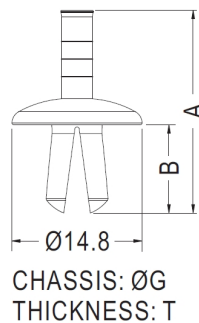


| PART NO | A | PACKAGE |
|---------|------|---------|
| NLR-290 | 29.3 | 1000 |
| NLR-291 | 30.3 | 1000 |



- ◆ MATERIAL : NYLON 66 (UL)
- ◆ FLAME CLASS : 94V-2/94V-0
- ◆ COLOR : BLACK/NATURAL/WHITE
- ◆ UNIT: mm

用途：尼龙铆钉，用于装配的孔或机板间之固定，敲入后可牢固于物件上。

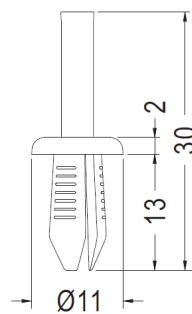


| PART NO | A | B | C | T | PACKAGE |
|---------|------|------|------|---------|---------|
| NLR-288 | 23.0 | 10.0 | 6.0 | 2.0~7.0 | 1000 |
| NLR-289 | 36.8 | 15.0 | 6.35 | 6.0 | 1000 |



- ◆ MATERIAL : NYLON 6 (UL)
- ◆ FLAME CLASS : 94V-2
- ◆ COLOR : BLACK/NATURAL
- ◆ UNIT: mm

用途：尼龙铆钉，用于装配的孔或机板间之固定，敲入后可牢固于物件上。



MOUNTING HOLE Ø6.0~Ø6.4
THICKNESS 6.0

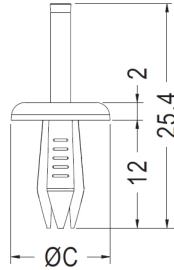
| PART NO | PACKAGE |
|---------|---------|
| NLR-314 | 1000 |

尼龙铆钉 SNAP RIVET 铆钉



- ◆ MATERIAL : NYLON 6 (UL)
- ◆ FLAME CLASS : 94V-2
- ◆ COLOR : BLUE
- ◆ UNIT: mm

用途：尼龙铆钉，用于装配的孔或机板间之固定，敲入后可牢固于物件上。



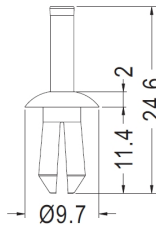
MOUNTING HOLE Ø4.0
THICKNESS 5.0

| PART NO | C | PACKAGE |
|---------|------|---------|
| NLR-294 | 9.0 | 1000 |
| NLR-299 | 11.0 | 1000 |



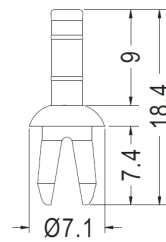
- ◆ MATERIAL : NYLON 66 (UL)
- ◆ FLAME CLASS : 94V-2/94V-0
- ◆ COLOR : BLACK/NATURAL
- ◆ UNIT: mm

用途：尼龙铆钉，用于装配的孔或机板间之固定，敲入后可牢固于物件上。



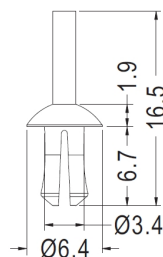
MOUNTING HOLE Ø5.0
THICKNESS 3.0~7.0

| PART NO | PACKAGE |
|---------|---------|
| NLR-126 | 1000 |



MOUNTING HOLE Ø5.0
THICKNESS 1.5~5.0

| PART NO | PACKAGE |
|---------|---------|
| NLR-127 | 1000 |



MOUNTING HOLE Ø3.4~Ø3.7
THICKNESS 3.4~4.8

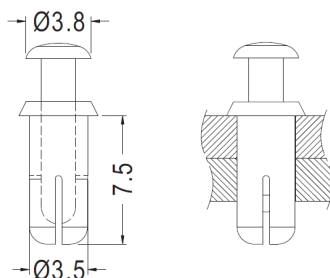
| PART NO | PACKAGE |
|---------|---------|
| NLR-128 | 1000 |

尼龙铆钉 SNAP RIVET 铆钉



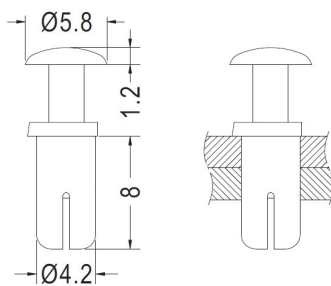
- ◆ MATERIAL : NYLON 66 (UL)
- ◆ FLAME CLASS : 94V-2/94V-0
- ◆ COLOR : BLACK/NATURAL
- ◆ UNIT: mm

用途：尼龙铆钉，用于PC板、铁板零件固定，代替螺丝，省时不需工具，结合力强。

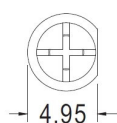


MOUNTING HOLE Ø3.5
THICKNESS 5.0~6.0

| PART NO | PACKAGE |
|---------|---------|
| NLR-129 | 1000 |



MOUNTING HOLE Ø4.3~Ø4.4
THICKNESS 4.5

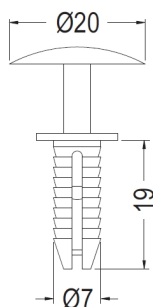


| PART NO | PACKAGE |
|---------|---------|
| NLR-158 | 1000 |



- ◆ MATERIAL : NYLON 6 (UL)
- ◆ FLAME CLASS : 94V-2/94V-0
- ◆ COLOR : BLACK/NATURAL/GRAY
- ◆ UNIT: mm

用途：尼龙铆钉，用于PC板与机板间固定，省时方便。



MOUNTING HOLE Ø7.0
THICKNESS 10.0

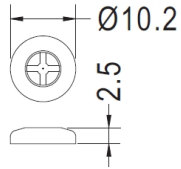
| PART NO | PACKAGE |
|---------|---------|
| NLR-130 | 1000 |

尼龙铆钉 SNAP RIVET 铆钉

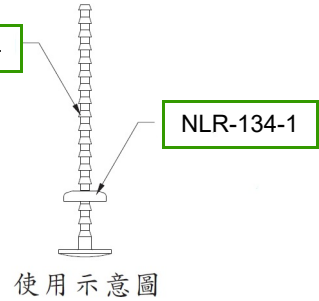
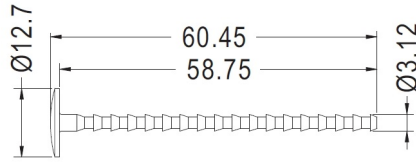


- ◆ MATERIAL : NYLON 66 (UL)
- ◆ FLAME CLASS : 94V-2/94V-0
- ◆ COLOR : BLACK/NATURAL
- ◆ UNIT: mm

用途：尼龙铆钉，用于PC板、铁板、书本间固定，可调式，结合力强，可搭配NLR-134-1使用。



NLR-134-1

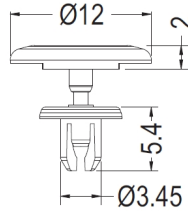


| PART NO | PACKAGE |
|---------|---------|
| NLR-134 | 500 |



- ◆ MATERIAL : PC (UL)
- ◆ FLAME CLASS : 94V-0
- ◆ COLOR : BLACK/WHITE
- ◆ UNIT: mm

用途：尼龙铆钉，用于PC板与机板间固定，省时方便。



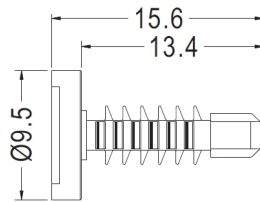
MOUNTING HOLE Ø3.5
THICKNESS 1.6~2.4

| PART NO | PACKAGE |
|---------|---------|
| NLR-136 | 1000 |



- ◆ MATERIAL : PC (UL)
- ◆ FLAME CLASS : 94V-0
- ◆ COLOR : BLACK/WHITE
- ◆ UNIT: mm

用途：尼龙铆钉，用于PC板与机板间固定，省时方便。



MOUNTING HOLE Ø3.96
THICKNESS 0.8~7.92

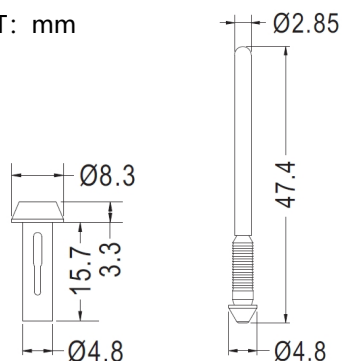
| PART NO | PACKAGE |
|---------|---------|
| NLR-176 | 500 |

尼龙铆钉 SNAP RIVET 铆钉



- ◆ CLIP MATERIAL : NYLON 66 (UL)
- ◆ FLAME CLASS : 94V-2/94V-0
- ◆ PIN MATERIAL : POM
- ◆ COLOR : BLACK
- ◆ UNIT: mm

用途：尼龙铆钉，用于装配的孔或机板间之固定，敲入后可牢固于物件上。



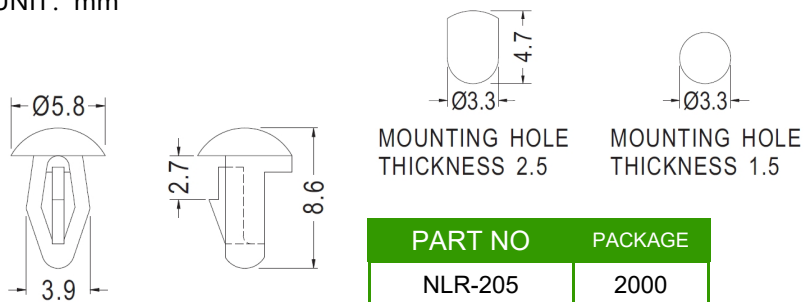
| PART NO | PACKAGE |
|---------|---------|
| NLR-177 | 500 |

尼龙铆钉 SNAP RIVET 铆钉

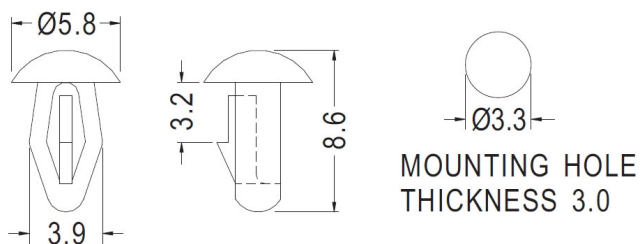


- ◆ MATERIAL : NYLON 66 (UL)
- ◆ FLAME CLASS : 94V-2/94V-0
- ◆ COLOR : BLACK/NATURAL
- ◆ UNIT: mm

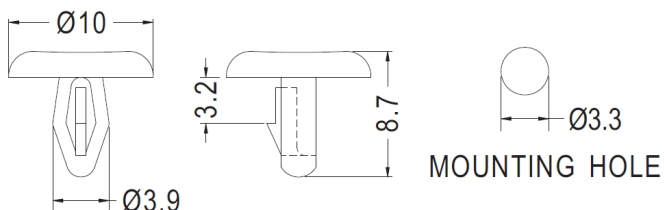
用途：尼龙铆钉，用于PC板与机板间固定，省时方便。



| PART NO | PACKAGE |
|---------|---------|
| NLR-205 | 2000 |



| PART NO | PACKAGE |
|---------|---------|
| NLR-195 | 2000 |



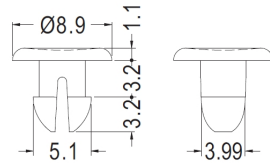
| PART NO | PACKAGE |
|---------|---------|
| NLR-224 | 1000 |

尼龙铆钉 MOUNTING BUTTON 铆钉



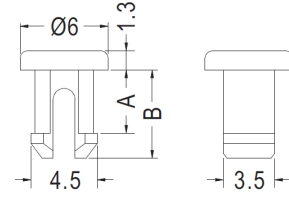
- ◆ MATERIAL : NYLON 66 (UL)
- ◆ FLAME CLASS : 94V-2/94V-0
- ◆ COLOR : BLACK/NATURAL
- ◆ UNIT: mm

用途：尼龙铆钉，用于PC板与机板间固定，省时方便。



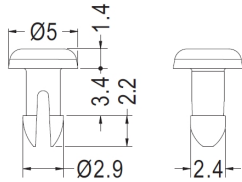
CHASSIS Ø4.5
THICKNESS 3.0

| PART NO | PACKAGE |
|---------|---------|
| NLR-197 | 1000 |



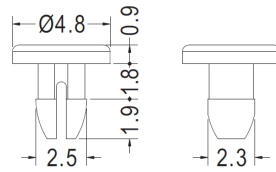
CHASSIS Ø4.0

| PART NO | A | B | PACKAGE |
|---------|-----|-----|---------|
| NLR-199 | 4.3 | 6.0 | 2000 |
| NLR-200 | 2.0 | 3.7 | 2000 |



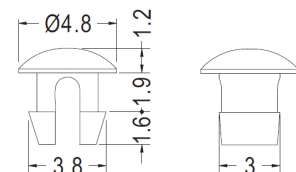
CHASSIS Ø2.5
THICKNESS 3.2

| PART NO | PACKAGE |
|---------|---------|
| NLR-241 | 2000 |



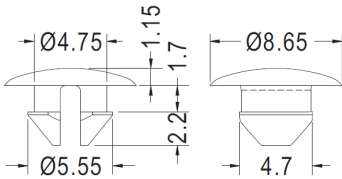
CHASSIS Ø2.3
THICKNESS 1.6

| PART NO | PACKAGE |
|---------|---------|
| NLR-201 | 2000 |



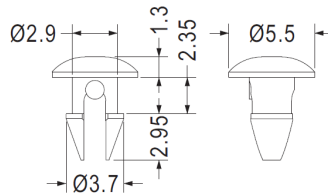
CHASSIS Ø3.0
THICKNESS 1.6~1.8

| PART NO | PACKAGE |
|---------|---------|
| NLR-202 | 2000 |



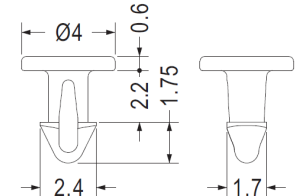
CHASSIS Ø4.8
THICKNESS 1.6

| PART NO | PACKAGE |
|---------|---------|
| NLR-242 | 2000 |



CHASSIS Ø3.0
THICKNESS 2.2

| PART NO | PACKAGE |
|---------|---------|
| NLR-319 | 2000 |



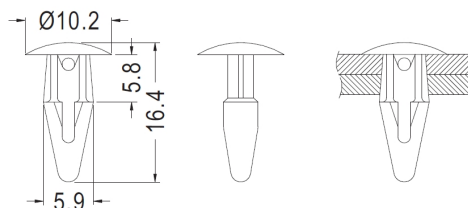
CHASSIS Ø2.0
THICKNESS 1.9

| PART NO | PACKAGE |
|---------|---------|
| NLR-320 | 2000 |



用途：尼龙铆钉，用于各种零件间之固定，省时方便。

- ◆ MATERIAL : NYLON 66 (UL) / POM (UL)
- ◆ FLAME CLASS : 94V-2/94V-0/94HB
- ◆ COLOR : BLACK/WHITE
- ◆ UNIT: mm



CHASSIS Ø5.0

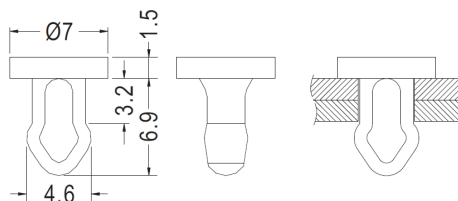
| PART NO | PACKAGE |
|---------|---------|
| NLR-196 | 1000 |

尼龙铆钉 MOUNTING BUTTON 铆钉



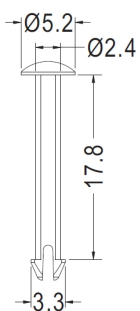
- ◆ MATERIAL : NYLON 66 (UL)
- ◆ FLAME CLASS : 94V-2/94V-0
- ◆ COLOR : BLACK/NATURAL
- ◆ UNIT: mm

用途：尼龙铆钉，用于PC板与机板间固定，省时方便。



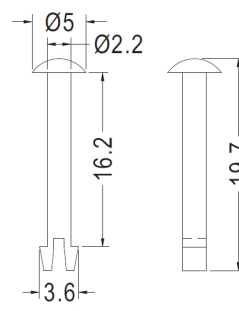
CHASSIS Ø4.0

| PART NO | PACKAGE |
|---------|---------|
| NLR-198 | 2000 |



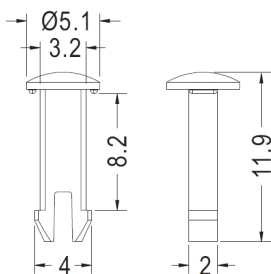
MOUNTING HOLE Ø2.5

| PART NO | PACKAGE |
|---------|---------|
| NLR-207 | 1000 |



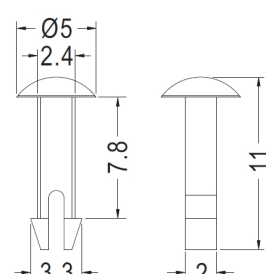
MOUNTING HOLE Ø3.0

| PART NO | PACKAGE |
|---------|---------|
| NLR-214 | 1000 |



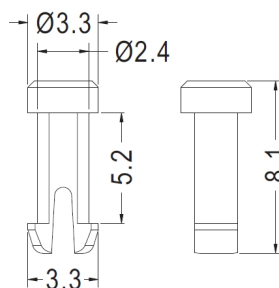
MOUNTING HOLE Ø3.3
THICKNESS 7.7

| PART NO | PACKAGE |
|---------|---------|
| NLR-225 | 1000 |



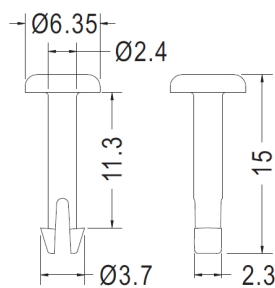
MOUNTING HOLE Ø2.5

| PART NO | PACKAGE |
|---------|---------|
| NLR-226 | 1000 |



MOUNTING HOLE Ø2.5

| PART NO | PACKAGE |
|---------|---------|
| NLR-232 | 1000 |



MOUNTING HOLE Ø2.5

| PART NO | PACKAGE |
|---------|---------|
| NLR-243 | 1000 |

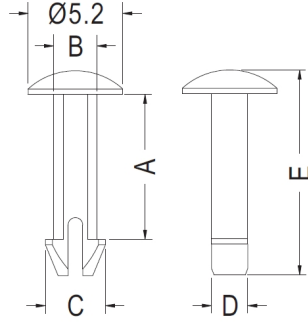
尼龙铆钉 MOUNTING BUTTON 铆钉



用途：尼龙铆钉，用于PC板与机板间固定，省时方便。

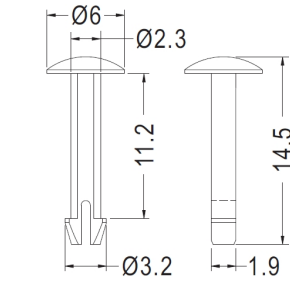
- ◆ MATERIAL : NYLON 66 (UL)
- ◆ FLAME CLASS : 94V-2/94V-0
- ◆ COLOR : BLACK/NATURAL
- ◆ UNIT: mm

- ◆ MATERIAL : LCP (UL)
- ◆ FLAME CLASS : 94V-0
- ◆ COLOR : NATURAL
- ◆ UNIT: mm



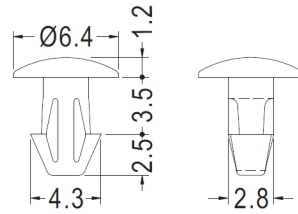
MOUNTING HOLE: ØG

| PART NO | A | B | C | D | E | G | PACKAGE |
|---------|------|-----|-----|-----|------|-----|---------|
| NLR-216 | 8.1 | 2.0 | 2.7 | 1.8 | 11.4 | 2.3 | 1000 |
| NLR-217 | 14.5 | 2.0 | 2.7 | 1.8 | 17.8 | 2.3 | 1000 |
| NLR-218 | 8.0 | 2.4 | 3.3 | 2.0 | 11.3 | 2.5 | 1000 |



MOUNTING HOLE Ø2.4

| PART NO | PACKAGE |
|---------|---------|
| NLR-227 | 1000 |



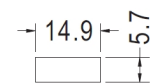
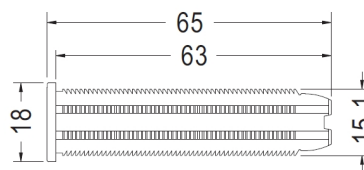
P.C.B Ø3.0
THICKNESS 3.4

| PART NO | PACKAGE |
|---------|---------|
| NLR-245 | 1000 |



- ◆ MATERIAL : NYLON 66 (UL)
- ◆ FLAME CLASS : 94V-2/94V-0
- ◆ COLOR : BLACK/NATURAL
- ◆ UNIT: mm

用途：尼龙铆钉，用于木板、铁板、PC板...等板子间的结合固定。



MOUNTING HOLE
THICKNESS 60.0

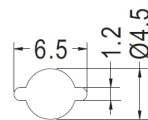
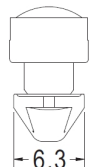
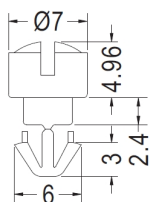
| PART NO | PACKAGE |
|---------|---------|
| NLR-236 | 500 |

尼龙铆钉 MOUNTING BUTTON 铆钉



- ◆ MATERIAL : NYLON 66 (UL)
- ◆ FLAME CLASS : 94V-2/94V-0
- ◆ COLOR : BLACK/NATURAL
- ◆ UNIT: mm

用途：尼龙铆钉，装于机壳上，避免使用者不当自行拆机。



MOUNTING HOLE THICKNESS 3.5~3.8

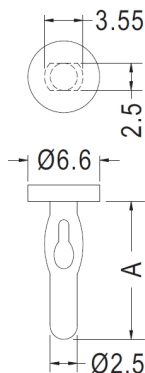
| PART NO | PACKAGE |
|---------|---------|
| NLR-246 | 1000 |

尼龙铆钉 SNAP RIVET 铆钉

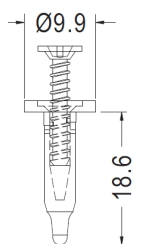


- ◆ MATERIAL : NYLON 66 (UL)
- ◆ FLAME CLASS : 94V-2/94V-0
- ◆ COLOR : BLACK/NATURAL
- ◆ UNIT: mm

用途：尼龙铆钉，用于PC板与机板间固定，省时方便。



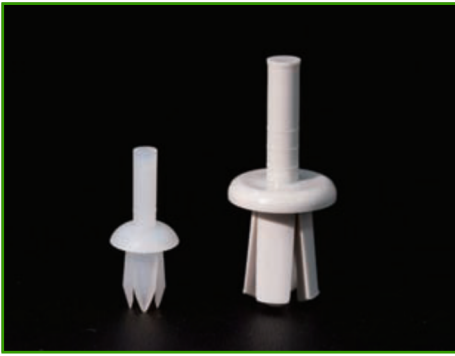
| PART NO | A | PACKAGE |
|---------|------|---------|
| NLR-265 | 12.7 | 1000 |
| NLR-275 | 8.5 | 1000 |



CHASSIS Ø4.5~Ø4.7 THICKNESS 8.3~10.0

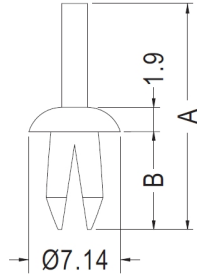
| PART NO | PACKAGE |
|---------|---------|
| NLR-266 | 1000 |

尼龙铆钉 SNAP RIVET 铆钉

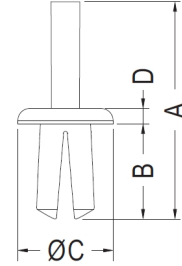


用途：尼龙铆钉，用于装配的孔或机板间之固定，敲入后可牢固于物件上。

- ◆ MATERIAL : NYLON 66 (UL)
- ◆ FLAME CLASS : 94V-2/94V-0
- ◆ COLOR : BLACK/NATURAL
- ◆ UNIT: mm
- ◆ MATERIAL : NYLON 66(UL)/PP
- ◆ FLAME CLASS : 94V-0/94V-2
- ◆ COLOR : NATURAL/BLACK/GRAY
- ◆ UNIT: mm



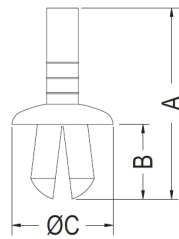
CHASSIS: ØG
THICKNESS: T



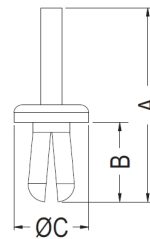
MOUNTING HOLE: ØG

| PART NO | A | B | G | T | PACKAGE |
|---------|-------|------|-----|-----------|---------|
| NLR-267 | 17.62 | 7.62 | 4.0 | 1.57~5.0 | 1000 |
| NLR-268 | 16.1 | 7.4 | 4.8 | 1.57~5.53 | 1000 |

| PART NO | A | B | C | D | G | PACKAGE |
|---------|------|------|------|-----|-----|---------|
| NLR-278 | 26.5 | 11.6 | 11.6 | 1.9 | 6.3 | 1000 |
| NLR-305 | 17.8 | 7.9 | 8.7 | 2.0 | 4.8 | 1000 |

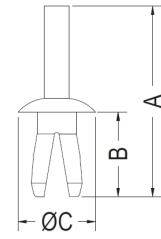


CHASSIS: ØG
THICKNESS: T



CHASSIS: ØG
THICKNESS: T

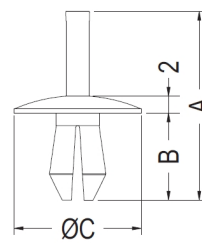
NLR-308



CHASSIS: ØG
THICKNESS: T

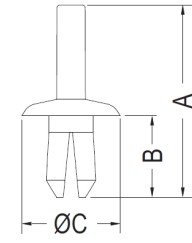
NLR-306

| PART NO | A | B | C | D | G | PACKAGE |
|---------|------|------|------|---------|---------|---------|
| NLR-272 | 18.7 | 7.3 | 9.9 | 5.2 | 2.0 | 1000 |
| NLR-276 | 26.7 | 10.0 | 14.6 | 5.7~6.0 | 7.0 | 1000 |
| NLR-277 | 36.5 | 14.9 | 14.6 | 6.0 | 10.0 | 1000 |
| NLR-297 | 23.4 | 9.9 | 12.0 | 5.5 | 7.0 | 1000 |
| NLR-306 | 18.0 | 8.2 | 7.5 | 4.0~4.2 | 4.0~6.5 | 1000 |
| NLR-307 | 23.8 | 11.0 | 16.0 | 5.5~6.4 | 2.5~6.5 | 1000 |
| NLR-308 | 28.8 | 11.8 | 11.1 | 5.5 | 2.4~7.9 | 1000 |



CHASSIS: ØG
THICKNESS: T

NLR-307



CHASSIS: ØG
THICKNESS: T

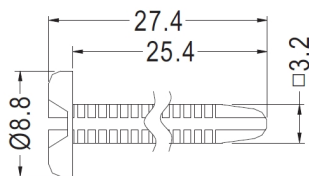
NLR-297

尼龙铆钉 MOUNTING BUTTON 铆钉



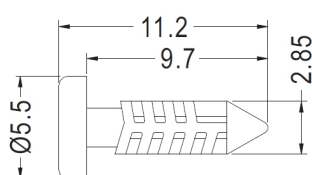
- ◆ MATERIAL : NYLON 66 (UL)
- ◆ FLAME CLASS : 94V-2/94V-0
- ◆ COLOR : BLACK/NATURAL
- ◆ UNIT: mm

用途：尼龙铆钉，用于木板、铁板、PC板...等板子间的结合固定。



MOUNTING HOLE Ø3.0

| PART NO | PACKAGE |
|---------|---------|
| NLR-208 | 1000 |



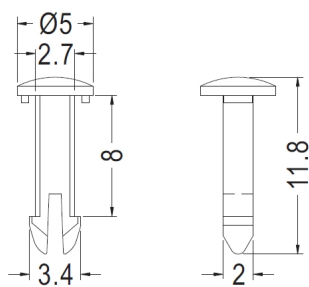
MOUNTING HOLE Ø3.0

| PART NO | PACKAGE |
|---------|---------|
| NLR-209 | 1000 |



- ◆ MATERIAL : NYLON 6 (UL)
- ◆ FLAME CLASS : 94V-2/94V-0
- ◆ COLOR : BLACK/NATURAL
- ◆ UNIT: mm

用途：尼龙铆钉，用于PC板与机板间固定，省时方便。



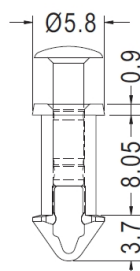
MOUNTING HOLE Ø3.0

| PART NO | PACKAGE |
|---------|---------|
| NLR-215 | 1000 |



- ◆ MATERIAL : NYLON 6 (UL)
- ◆ FLAME CLASS : 94V-2/94V-0
- ◆ COLOR : BLACK
- ◆ UNIT: mm

用途：尼龙铆钉，用做风扇的铆钉固定。



MOUNTING HOLE Ø4.4~Ø4.5
THICKNESS 8.0

| PART NO | PACKAGE |
|---------|---------|
| NLR-220 | 1000 |

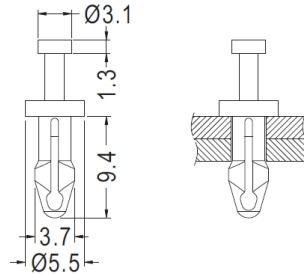
尼龙铆钉 SNAP RIVET 铆钉



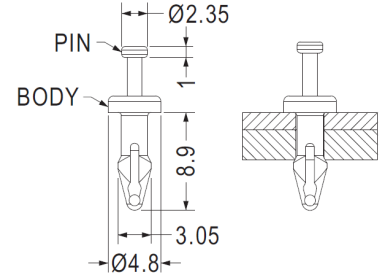
用途：尼龙铆钉，用于风扇之固定。

- ◆ MATERIAL : NYLON 66 (UL)
- ◆ FLAME CLASS : 94V-2/94V-0
- ◆ COLOR : BLACK
- ◆ UNIT: mm

- ◆ MATERIAL : NYLON 66 (UL)
- ◆ PIN MATERIAL : PC
- ◆ FLAME CLASS : 94V-2/94V-0
- ◆ COLOR : BLACK
- ◆ UNIT: mm



HOLE IN FAN Ø3.1~Ø3.3
THICKNESS 3.9~4.6



MOUNTING HOLE Ø2.5~Ø2.6
THICKNESS 4.0~4.5

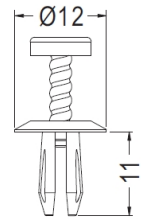
| PART NO | PACKAGE |
|---------|---------|
| NLR-286 | 1000 |

| PART NO | PACKAGE |
|---------|---------|
| NLR-326 | 1000 |

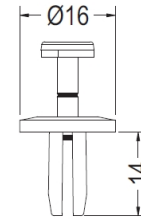


- ◆ MATERIAL : NYLON 66 (UL)
- ◆ FLAME CLASS : 94V-2/94V-0
- ◆ COLOR : BLACK/NATURAL
- ◆ UNIT: mm

用途：尼龙铆钉，用于PC板与机板间固定，省时方便。



MOUNTING HOLE Ø5.0
THICKNESS 2.5~6.0

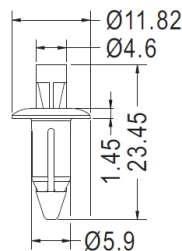


MOUNTING HOLE Ø7.0
THICKNESS 6.0

| PART NO | PACKAGE |
|---------|---------|
| NLR-293 | 1000 |

| PART NO | PACKAGE |
|---------|---------|
| NLR-309 | 1000 |

- ◆ MATERIAL : POM
- ◆ FLAME CLASS : 94V-2/94V-0
- ◆ COLOR : BLACK/NATURAL
- ◆ UNIT: mm



MOUNTING HOLE Ø6.3
THICKNESS 7.0

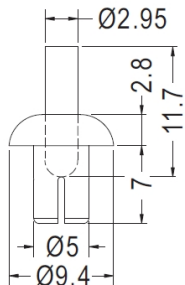
| PART NO | PACKAGE |
|---------|---------|
| NLR-311 | 1000 |

尼龙铆钉 SNAP RIVET 铆钉



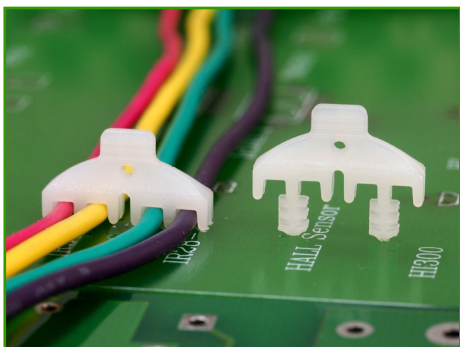
- ◆ MATERIAL : NYLON 66 (UL)
- ◆ FLAME CLASS : 94V-2/94V-0
- ◆ COLOR : BLACK/NATURAL
- ◆ UNIT: mm

用途：尼龙铆钉，用于装配的孔或机板间之固定，敲入后可牢固于物件上。



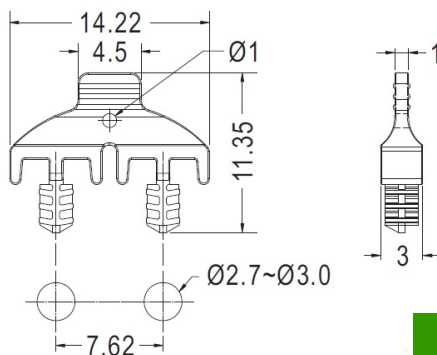
MOUNTING HOLE Ø5.1
THICKNESS 4.1~5.1

| PART NO | PACKAGE |
|---------|---------|
| NLR-298 | 1000 |



- ◆ MATERIAL : NYLON 66 (UL)
- ◆ FLAME CLASS : 94V-2/94V-0
- ◆ COLOR : BLACK/NATURAL
- ◆ UNIT: mm

用途：尼龙铆钉，用于电线固定。



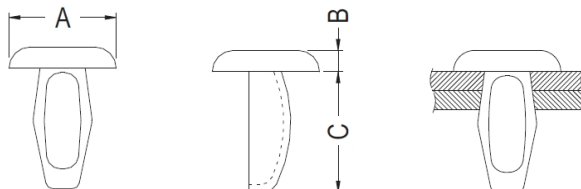
MOUNTING HOLE

| PART NO | PACKAGE |
|---------|---------|
| NLR-315 | 1000 |



- ◆ MATERIAL : NYLON 66 (UL)/POM(UL)
- ◆ FLAME CLASS : 94V-2/94V-0/94HB
- ◆ COLOR : BLACK/NATURAL
- ◆ UNIT: mm

用途：尼龙铆钉，用于PC板与机板间固定，省时方便。



MOUNTING HOLE: G
BOARD THICKNESS: T

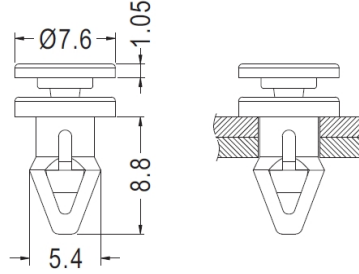
| PART NO | A | B | C | G | T | PACKAGE |
|---------|-----|-----|------|---------|---------|---------|
| NLR-180 | 7.6 | 1.6 | 8.6 | 3.3~3.5 | 2.0~3.1 | 2000 |
| NLR-183 | 7.6 | 1.3 | 10.8 | 3.3~3.6 | 3.0~4.0 | 1000 |
| NLR-186 | 7.3 | 1.4 | 8.4 | 3.0~3.2 | 2.0~3.5 | 2000 |

风扇铆钉 SNAP RIVET 铆钉



- ◆ MATERIAL : TPU
- ◆ PIN MATERIAL : NYLON 66 (UL)
- ◆ FLAME CLASS : 94V-2
- ◆ COLOR : BLACK
- ◆ UNIT: mm

用途：风扇铆钉，用于计算机风扇的固定。



HOLE IN FAN Ø4.4
THICKNESS 3.0

| PART NO | PACKAGE |
|---------|---------|
|---------|---------|

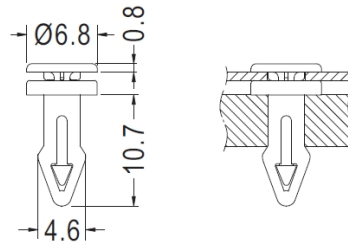
| | |
|---------|------|
| NLR-099 | 1000 |
|---------|------|



- ◆ MATERIAL : TPE
- ◆ PIN MATERIAL : NYLON 66 (UL)
- ◆ FLAME CLASS : 94V-2/94V-0
- ◆ COLOR : BLACK
- ◆ UNIT: mm

用途：风扇铆钉，用于计算机风扇的固定。

HOLE IN FAN Ø3.6
THICKNESS 0.8



HOLE IN FAN Ø3.5
THICKNESS 5.0

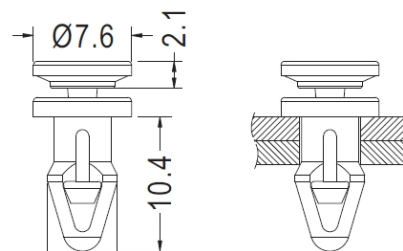
| PART NO | PACKAGE |
|---------|---------|
|---------|---------|

| | |
|---------|------|
| NLR-238 | 1000 |
|---------|------|



- ◆ MATERIAL : TPE
- ◆ PIN MATERIAL : NYLON 66 (UL)
- ◆ FLAME CLASS : 94V-2/94V-0
- ◆ COLOR : BLACK
- ◆ UNIT: mm

用途：风扇铆钉，用于计算机风扇的固定。

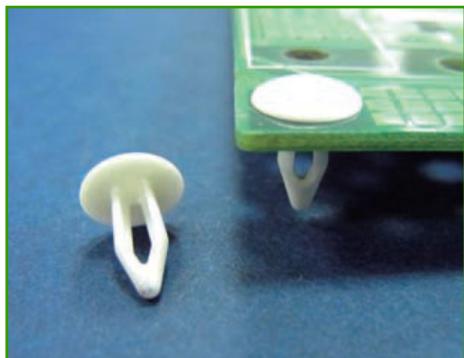


HOLE IN FAN Ø4.5
THICKNESS 3.5

| PART NO | PACKAGE |
|---------|---------|
|---------|---------|

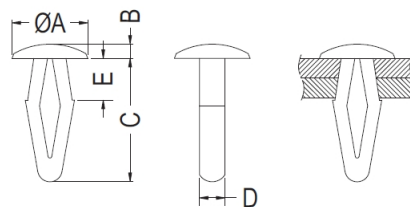
| | |
|---------|------|
| NLR-285 | 1000 |
|---------|------|

铆钉 SNAP RIVET



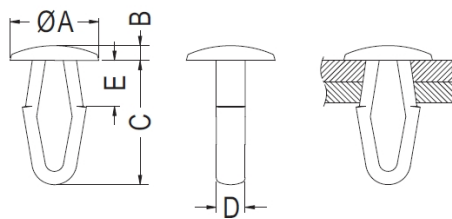
用途：铆钉，用于PC板与机板间固定，省时方便。

- ◆ MATERIAL : NYLON 66 (UL) / POM (UL)
- ◆ FLAME CLASS : 94V-2/94V-0 / 94HB
- ◆ COLOR : BLACK/NATURAL
- ◆ UNIT: mm



CHASSIS: ØG
THICKNESS: T

| PART NO | A | B | C | D | E | G | T | PACKAGE |
|---------|-----|-----|------|-----|-----|-----|---------|---------|
| NLR-187 | 9.0 | 1.6 | 14.0 | 2.9 | 5.0 | 3.9 | 1.0~5.0 | 1000 |
| NLR-188 | 8.0 | 1.5 | 13.0 | 2.7 | 4.4 | 3.2 | 1.0~4.5 | 2000 |
| NLR-239 | 9.0 | 1.6 | 14.0 | 2.9 | 6.1 | 3.9 | 1.0~6.0 | 1000 |
| NLR-240 | 7.6 | 1.4 | 11.5 | 2.6 | 6.5 | 3.2 | 3.5~6.3 | 2000 |



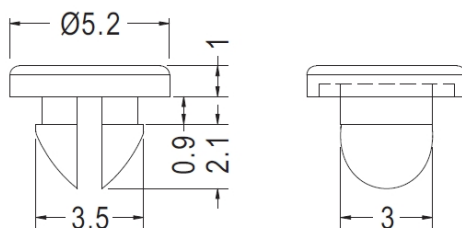
CHASSIS: ØG
THICKNESS: T

| PART NO | A | B | C | D | E | G | T | PACKAGE |
|---------|------|-----|------|-----|-----|-----|---------|---------|
| NLR-189 | 12.0 | 2.0 | 16.8 | 3.9 | 6.2 | 6.4 | 1.5~6.2 | 2000 |
| NLR-237 | 11.0 | 2.9 | 15.0 | 3.4 | 5.7 | 4.7 | 1.0~5.5 | 2000 |



- ◆ MATERIAL : PC
- ◆ COLOR : BLACK
- ◆ UNIT: mm

用途：铆钉，用于PC板与机板间固定，省时方便。



CHASSIS Ø3.1
THICKNESS 0.8

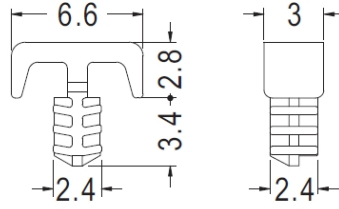
| PART NO | PACKAGE |
|---------|---------|
| NLR-229 | 1000 |

铆钉 SNAP RIVET



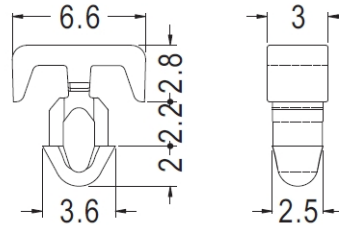
- ◆ MATERIAL : NYLON 66 (UL)
- ◆ FLAME CLASS : 94V-2/94V-0
- ◆ COLOR : BLACK/NATURAL
- ◆ UNIT: mm

用途：铆钉，用于PC板与机板间固定，省时方便。



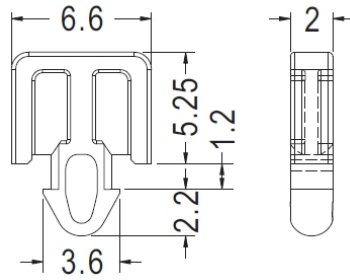
MOUNTING HOLE $\varnothing 3.2$
THICKNESS 3.0

| PART NO | PACKAGE |
|---------|---------|
| NLR-262 | 1000 |



MOUNTING HOLE $\varnothing 3.0$

| PART NO | PACKAGE |
|---------|---------|
| NLR-284 | 1000 |



MOUNTING HOLE
THICKNESS 1.0

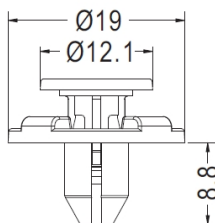
| PART NO | PACKAGE |
|---------|---------|
| NLR-292 | 1000 |

铆钉 SNAP RIVET



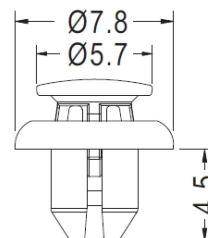
用途：铆钉，用于PC板、铁板零件固定，结合力强。

- ◆ MATERIAL : POM
- ◆ COLOR : BLACK
- ◆ UNIT: mm
- ◆ MATERIAL : PC (UL)
- ◆ FLAME CLASS : 94V-0
- ◆ COLOR : NATURAL
- ◆ UNIT: mm



CHASSIS Ø7.0
THICKNESS 3.2~3.8

| PART NO | PACKAGE |
|---------|---------|
| NLR-287 | 1000 |



RECOMMEND MOUNTING HOLE Ø4.4~Ø4.5
RECOMMEND THICKNESS 1.0~1.2

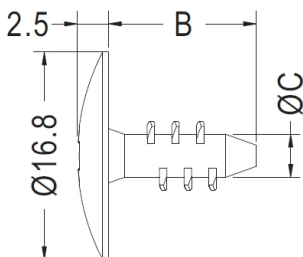
| PART NO | PACKAGE |
|---------|---------|
| NLR-312 | 1000 |

螺丝铆钉 SCREW RIVET



- ◆ MATERIAL : NYLON 66 (UL)
- ◆ FLAME CLASS : 94V-2/94V-0
- ◆ COLOR : BLACK
- ◆ UNIT: mm

用途：螺丝铆钉，螺丝孔之保护。



FOR NUT: F
THICKNESS: T

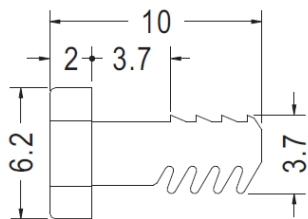
| PART NO | B | C | F | T | PACKAGE |
|---------|------|------|----|------|---------|
| LSM-1 | 12.0 | 3.5 | M6 | 5.0 | 1000 |
| LSM-2 | 12.0 | 3.45 | M6 | 5.0 | 1000 |
| LSM-3 | 18.0 | 3.45 | M6 | 10.0 | 1000 |
| LSM-4 | 14.0 | 4.5 | M8 | 5.0 | 1000 |

散热片铆钉 SNAP RIVET



- ◆ MATERIAL : NYLON 66 (UL)
- ◆ FLAME CLASS : 94V-2/94V-0
- ◆ COLOR : BLACK/NATURAL
- ◆ UNIT: mm

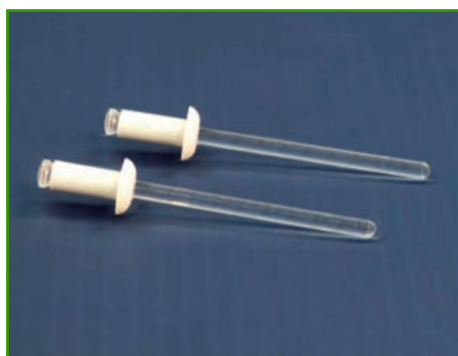
用途：散热片铆钉，将散热片固定。



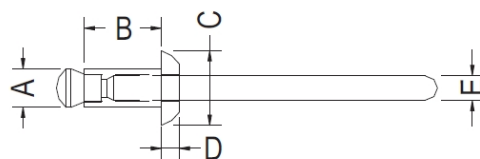
MOUNTING HOLE $\varnothing 3.0$

| PART NO | PACKAGE |
|---------|---------|
| NLR-264 | 1000 |

塑料铆钉 MOUNTING BUTTON 铆钉



- ◆ MATERIAL : NYLON 66 (UL)/PC(UL) 用途: 塑料铆钉, 用于机板与机板间之固定, 使用方便。
- ◆ FLAME CLASS : 94V-2/94V-0
- ◆ COLOR : BLACK/NATURAL
- ◆ UNIT: mm



MOUNTING HOLE: $\varnothing G$
 THICKNESS: T
 SHEAR FORCE: F (剪斷力) (kg)

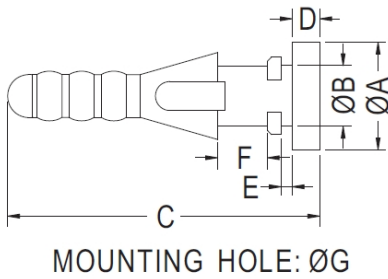
| PART NO | A | B | C | D | E | F | G | T | PACKAGE |
|---------|-----|------|------|-----|-----|------|-------------------|----------|---------|
| LMB001 | 3.2 | 6.4 | 6.4 | 1.4 | 2.1 | 20.0 | $\varnothing 3.3$ | 1.0~4.0 | 500 |
| LMB002 | 4.0 | 6.4 | 8.0 | 1.8 | 2.4 | 25.0 | $\varnothing 4.1$ | 1.0~4.0 | 500 |
| LMB003 | 4.8 | 8.0 | 9.6 | 2.0 | 2.8 | 40.0 | $\varnothing 4.9$ | 1.5~5.0 | 500 |
| LMB004 | 5.6 | 9.6 | 12.0 | 2.2 | 3.4 | 65.0 | $\varnothing 5.7$ | 2.0~5.5 | 500 |
| LMB005 | 3.2 | 9.6 | 6.4 | 1.4 | 2.1 | 20.0 | $\varnothing 3.3$ | 4.0~7.0 | 500 |
| LMB006 | 4.0 | 9.6 | 8.0 | 1.8 | 2.4 | 25.0 | $\varnothing 4.1$ | 4.0~7.0 | 500 |
| LMB007 | 4.8 | 11.2 | 9.6 | 2.0 | 2.8 | 40.0 | $\varnothing 4.9$ | 5.0~8.0 | 500 |
| LMB008 | 5.6 | 12.7 | 12.0 | 2.2 | 3.4 | 65.0 | $\varnothing 5.7$ | 5.5~8.5 | 500 |
| LMB009 | 3.2 | 12.7 | 6.4 | 1.4 | 2.1 | 20.0 | $\varnothing 3.3$ | 7.0~10.0 | 500 |
| LMB010 | 4.0 | 12.7 | 8.0 | 1.8 | 2.4 | 25.0 | $\varnothing 4.1$ | 7.0~10.0 | 500 |
| LMB011 | 4.8 | 14.4 | 9.6 | 2.0 | 2.8 | 40.0 | $\varnothing 4.9$ | 8.0~11.0 | 500 |
| LMB012 | 5.6 | 15.9 | 12.0 | 2.2 | 3.4 | 65.0 | $\varnothing 5.7$ | 8.5~12.0 | 500 |

风扇铆钉 FAN SNAP RIVET



- ◆ MATERIAL : TPE
- ◆ G:HARDNESS IS SHORE A45
- ◆ H:HARDNESS IS SHORE A55
- ◆ COLOR : BLACK/BLUE
- ◆ UNIT: mm

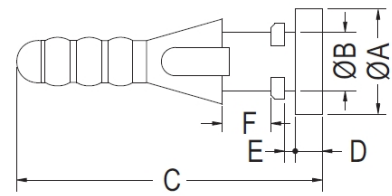
用途：风扇铆钉，用于计算机电源风扇的固定，降低噪音、牢固。



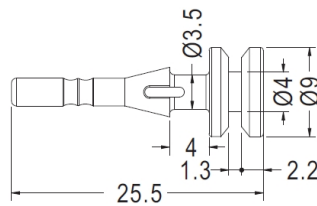
| PART NO | A | B | C | D | E | F | G | PACKAGE |
|---------|-------|-----|-------|-----|-----|------|-----|---------|
| FS-M01 | 7.8 | 4.4 | 22.6 | 2.0 | 0.8 | 3.6 | 4.3 | 1000 |
| FS-M09 | 7.5 | 4.4 | 25.4 | 2.0 | 4.0 | 3.0 | 4.2 | 1000 |
| FS-M14 | 5.8 | 3.5 | 20.0 | 1.5 | 0.8 | 3.8 | 3.5 | 1000 |
| FS-M15 | 5.8 | 3.5 | 70.0 | 1.5 | 0.8 | 27.0 | 3.5 | 1000 |
| FS-M17 | 8.8 | 4.4 | 23.0 | 1.5 | 0.8 | 4.5 | 4.4 | 1000 |
| FS-M19 | 7.8 | 4.4 | 23.1 | 2.5 | 0.8 | 3.6 | 4.4 | 1000 |
| FS-M20 | 7.8 | 4.4 | 23.7 | 2.5 | 1.4 | 3.6 | 4.4 | 1000 |
| FS-M25 | 10.25 | 4.4 | 23.0 | 1.6 | 1.3 | 3.0 | 4.4 | 1000 |
| FS-M47 | 8.8 | 3.5 | 21.85 | 1.5 | 1.0 | 4.0 | 3.5 | 1000 |
| FS-M48 | 7.8 | 3.5 | 21.85 | 1.5 | 1.0 | 4.0 | 3.5 | 1000 |
| FS-M74 | 7.0 | 4.0 | 22.85 | 2.0 | 1.6 | 3.8 | 4.0 | 1000 |
| FS-M75 | 7.8 | 4.4 | 23.1 | 2.5 | 0.8 | 3.6 | 4.4 | 1000 |
| FS-M76 | 8.8 | 4.4 | 23.3 | 1.5 | 1.1 | 4.5 | 4.3 | 1000 |
| FS-M106 | 8.0 | 4.3 | 27.0 | 1.5 | 1.2 | 3.8 | 4.5 | 1000 |



- ◆ MATERIAL : SILICON RUBBER
- ◆ COLOR : BLACK
- ◆ UNIT: mm

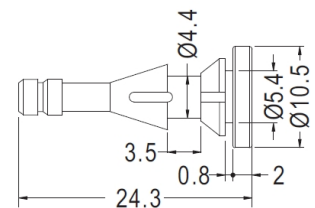


| PART NO | A | B | C | D | E | F | G | PACKAGE |
|---------|-----|-----|-----|-----|-----|------|-----|---------|
| FS-M07 | 4.4 | 0.8 | 4.5 | 8.8 | 1.5 | 23.0 | 4.4 | 1000 |
| FS-M08 | 4.3 | 0.9 | 3.9 | 7.6 | 1.2 | 22.2 | 4.3 | 1000 |



CHASSIS MOUNTING HOLE Ø4.0
FANS MOUNTING HOLE Ø3.5

| PART NO | PACKAGE |
|---------|---------|
| FS-M41 | 1000 |



CHASSIS MOUNTING HOLE Ø5.5
FANS MOUNTING HOLE Ø4.5

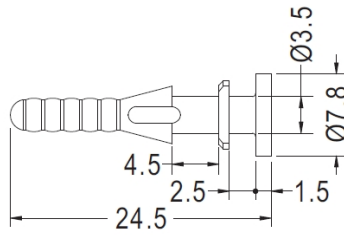
| PART NO | PACKAGE |
|---------|---------|
| FS-M40 | 1000 |

风扇铆钉 FAN MOUNTING BUTTON 铆钉



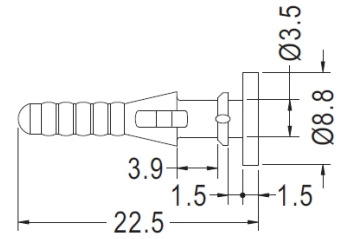
- ◆ MATERIAL : TPE
- ◆ COLOR : BLACK
- ◆ UNIT: mm

用途：风扇铆钉，用于计算机电源风扇之固定，降低噪音、牢固。



MOUNTING HOLE Ø3.5

| PART NO | PACKAGE |
|---------|---------|
| FS-M107 | 1000 |



MOUNTING HOLE Ø3.5

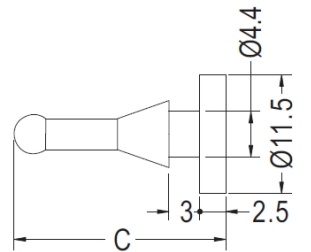
| PART NO | PACKAGE |
|---------|---------|
| FS-M108 | 1000 |



- ◆ MATERIAL : TPE
- ◆ G:HARDNESS IS SHORE A45
- ◆ H:HARDNESS IS SHORE A55
- ◆ COLOR : BLACK
- ◆ UNIT: mm

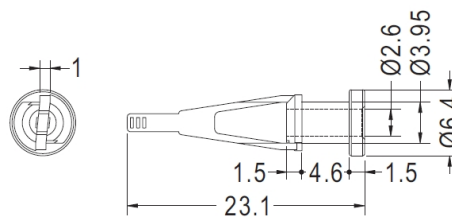
用途：风扇铆钉，用于计算机电源风扇之固定，降低噪音、牢固。

G:为45度硬度，H:为55度硬度



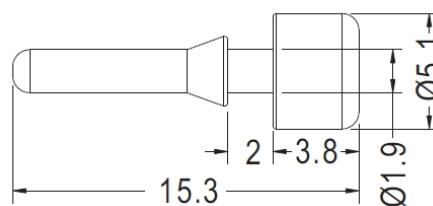
MOUNTING HOLE Ø4.6

| PART NO | C | PACKAGE |
|---------|------|---------|
| FS-M02 | 40.5 | 1000 |
| FS-M52 | 20.5 | 1000 |



MOUNTING HOLE Ø4.2

| PART NO | PACKAGE |
|---------|---------|
| FS-M53 | 1000 |



MOUNTING HOLE Ø2.0

| PART NO | PACKAGE |
|---------|---------|
| FS-M82 | 1000 |

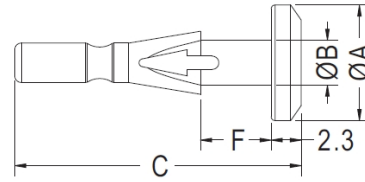
风扇铆钉 FAN SNAP RIVET



- ◆ MATERIAL : TPE
- ◆ G:HARDNESS IS SHORE A45
- ◆ H:HARDNESS IS SHORE A55
- ◆ COLOR : BLACK
- ◆ UNIT: mm

用途：风扇铆钉，用于计算机电源风扇的固定，降低噪音、牢固。

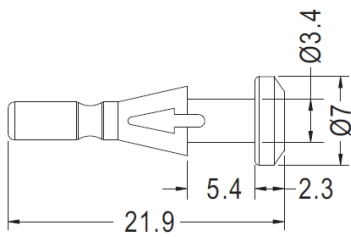
G:为45度硬度，H:为55度硬度



MOUNTING HOLE : ØG

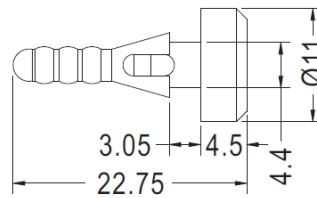
| PART NO | A | B | C | F | G | PACKAGE |
|---------|-----|-----|------|-----|-----|---------|
| FS-M84 | 8.8 | 3.4 | 21.9 | 5.4 | 3.5 | 1000 |
| FS-M85 | 8.5 | 4.1 | 22.0 | 4.5 | 4.5 | 1000 |

- ◆ MATERIAL : SILICON RUBBER
- ◆ COLOR : BLACK
- ◆ UNIT: mm



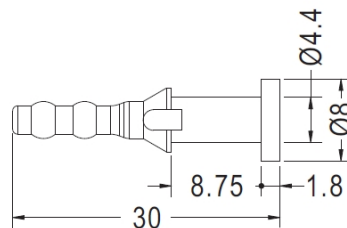
MOUNTING HOLE Ø3.6

| PART NO | PACKAGE |
|---------|---------|
| FS-M114 | 1000 |



MOUNTING HOLE Ø4.3
THICKNESS 4.0

| PART NO | PACKAGE |
|---------|---------|
| FS-M87 | 1000 |



MOUNTING HOLE Ø4.4~Ø4.5

| PART NO | PACKAGE |
|---------|---------|
| FS-M98 | 1000 |

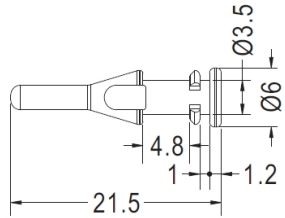
风扇铆钉 FAN MOUNTING BUTTON 铆钉



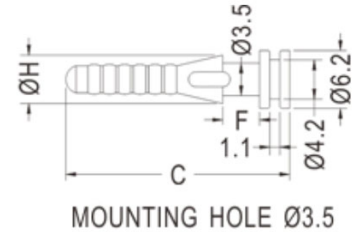
- ◆ MATERIAL : TPE
- ◆ G:HARDNESS IS SHORE A45
- ◆ H:HARDNESS IS SHORE A55
- ◆ COLOR : BLACK
- ◆ UNIT: mm

用途：风扇铆钉，用于计算机电源风扇之固定，降低噪音、牢固。

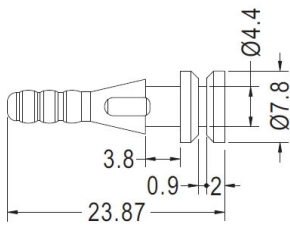
G:为45度硬度，H:为55度硬度



| PART NO | PACKAGE |
|---------|---------|
| FS-M111 | 1000 |

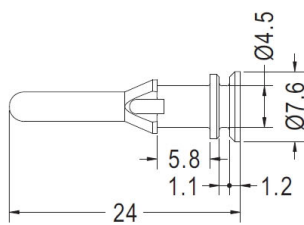


| PART NO | C | F | H | PACKAGE |
|---------|------|-----|-----|---------|
| FS-M99 | 24.3 | 4.0 | 5.2 | 1000 |
| FS-M100 | 24.3 | 4.0 | 5.0 | 1000 |
| FS-M103 | 25.3 | 5.0 | 5.0 | 1000 |



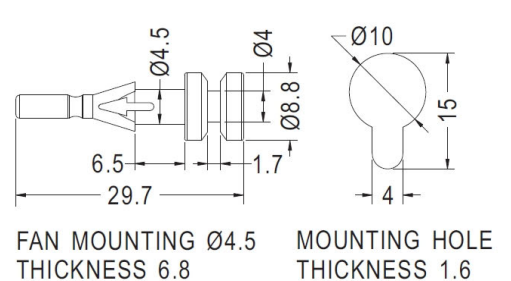
| PART NO | PACKAGE |
|---------|---------|
| FS-M86 | 1000 |

FAN MOUNTING HOLE Ø3.3
FAN THICKNESS 10.0

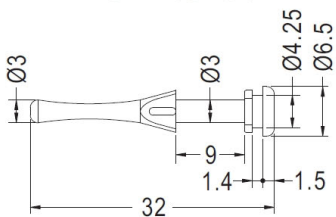


| PART NO | PACKAGE |
|---------|---------|
| FS-M101 | 1000 |

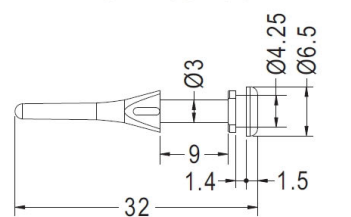
FAN MOUNTING HOLE Ø3.3
FAN THICKNESS 10.0



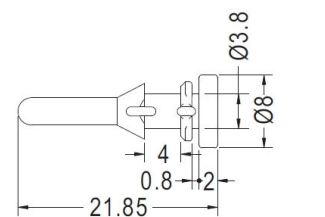
| PART NO | PACKAGE |
|---------|---------|
| FS-M03 | 1000 |



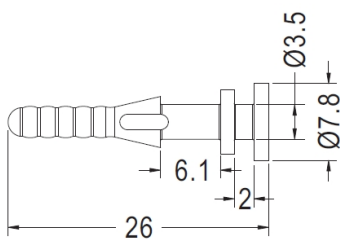
| PART NO | PACKAGE |
|---------|---------|
| FS-M13 | 1000 |



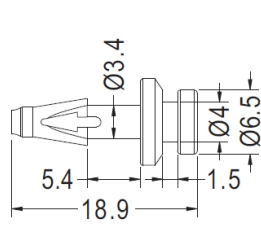
| PART NO | PACKAGE |
|---------|---------|
| FS-M110 | 1000 |



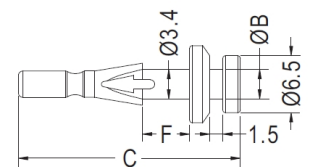
| PART NO | PACKAGE |
|---------|---------|
| FS-M94 | 1000 |



| PART NO | PACKAGE |
|---------|---------|
| FS-M112 | 1000 |



| PART NO | PACKAGE |
|---------|---------|
| FS-M81 | 1000 |



| PART NO | B | C | F | G | PACKAGE |
|---------|-----|------|-----|-----|---------|
| FS-M54 | 3.4 | 25.4 | 5.4 | 3.5 | 1000 |
| FS-M55 | 3.4 | 26.4 | 6.4 | 3.5 | 1000 |
| FS-M80 | 4.0 | 25.4 | 5.4 | 4.0 | 1000 |

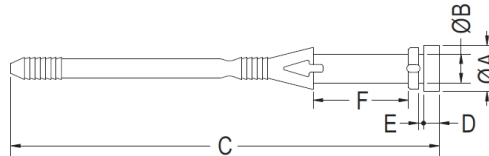
风扇铆钉 FAN SNAP RIVET



- ◆ MATERIAL : TPE
- ◆ G:HARDNESS IS SHORE A45
- ◆ H:HARDNESS IS SHORE A55
- ◆ COLOR : BLACK
- ◆ UNIT: mm

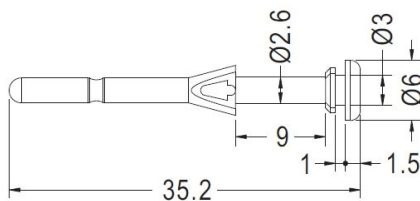
用途：风扇铆钉，用于计算机电源风扇的固定，降低噪音、牢固。

G:为45度硬度，H:为55度硬度



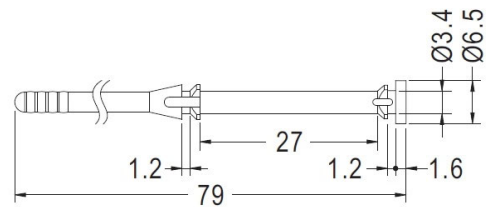
MOUNTING HOLE: ØG

| PART NO | A | B | C | D | E | F | G | PACKAGE |
|---------|-----|-----|-------|-----|-----|------|-----|---------|
| FS-M16 | 6.3 | 3.5 | 18.5 | 1.6 | 1.4 | 3.5 | 3.5 | 1000 |
| FS-M18 | 7.5 | 4.4 | 35.0 | 2.0 | 1.2 | 3.0 | 4.4 | 1000 |
| FS-M26 | 7.5 | 4.4 | 53.3 | 2.0 | 1.2 | 3.0 | 4.4 | 1000 |
| FS-M27 | 7.5 | 4.4 | 70.0 | 2.0 | 0.8 | 3.0 | 4.4 | 1000 |
| FS-M28 | 7.0 | 4.4 | 54.1 | 2.0 | 2.0 | 3.0 | 4.4 | 1000 |
| FS-M30 | 7.0 | 4.4 | 65.2 | 2.4 | 0.8 | 14.5 | 4.4 | 1000 |
| FS-M33 | 5.2 | 3.5 | 57.3 | 1.5 | 0.8 | 19.0 | 3.5 | 1000 |
| FS-M34 | 7.0 | 3.5 | 73.0 | 1.4 | 0.8 | 26.0 | 3.5 | 1000 |
| FS-M35 | 7.0 | 4.4 | 68.8 | 1.5 | 0.8 | 19.0 | 4.2 | 1000 |
| FS-M36 | 7.0 | 4.4 | 71.0 | 2.4 | 1.6 | 19.5 | 4.4 | 1000 |
| FS-M43 | 7.5 | 4.4 | 70.0 | 2.0 | 0.8 | 5.0 | 4.4 | 1000 |
| FS-M49 | 6.0 | 3.3 | 30.9 | 1.2 | 1.0 | 8.0 | 3.3 | 1000 |
| FS-M50 | 6.3 | 3.5 | 46.7 | 1.6 | 0.8 | 3.5 | 3.5 | 1000 |
| FS-M51 | 6.0 | 3.1 | 55.33 | 1.7 | 1.0 | 18.0 | 3.3 | 1000 |
| FS-M96 | 7.0 | 4.4 | 62.0 | 1.7 | 0.8 | 14.5 | 4.4 | 1000 |
| FS-M109 | 7.0 | 4.0 | 60.4 | 1.5 | 1.5 | 14.5 | 4.3 | 1000 |



MOUNTING HOLE Ø3.2

| PART NO | PACKAGE |
|---------|---------|
| FS-M24 | 1000 |



CHASSIS MOUNTING HOLE Ø3.7
FANS MOUNTING HOLE Ø3.5

| PART NO | PACKAGE |
|---------|---------|
| FS-M37 | 500 |

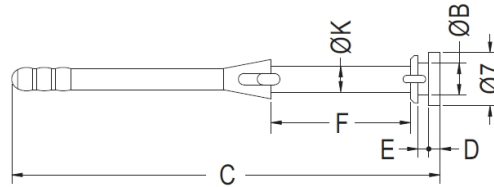
风扇铆钉 FAN MOUNTING BUTTON 铆钉



- ◆ MATERIAL : TPE
- ◆ G:HARDNESS IS SHORE A45
- ◆ H:HARDNESS IS SHORE A55
- ◆ COLOR : BLACK
- ◆ UNIT: mm

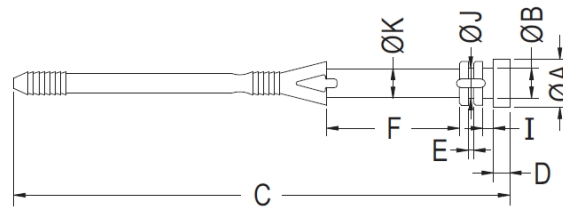
用途：风扇铆钉，用于计算机电源风扇之固定，降低噪音、牢固。

G:为45度硬度，H:为55度硬度



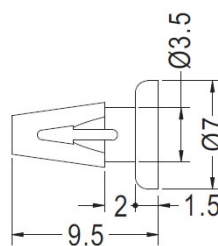
MOUNTING HOLE: ØG

| PART NO | B | C | D | E | F | G | K | PACKAGE |
|---------|------|------|------|------|------|-----|-----|---------|
| FS-M23 | 4.2 | 48.0 | 1.4 | 0.8 | 3.5 | 4.4 | 3.5 | 1000 |
| FS-M32 | 4.2 | 56.7 | 1.5 | 1.4 | 18.5 | 4.4 | 3.4 | 1000 |
| FS-M39 | 4.2 | 75.1 | 1.4 | 2.9 | 26.0 | 4.4 | 3.4 | 1000 |
| FS-M42 | 4.4 | 69.2 | 1.4 | 0.8 | 19.5 | 4.6 | 4.0 | 1000 |
| FS-M77 | 3.5 | 57.3 | 2.5 | 0.8 | 19.0 | 3.7 | 3.5 | 1000 |
| FS-M78 | 3.5 | 74.8 | 1.4 | 2.6 | 26.0 | 3.7 | 3.4 | 1000 |
| FS-M95 | 3.96 | 7394 | 0.98 | 0.91 | 27.0 | 4.2 | 3.4 | 1000 |
| FS-M113 | 3.5 | 57.2 | 1.4 | 0.8 | 19.0 | 3.7 | 3.5 | 1000 |



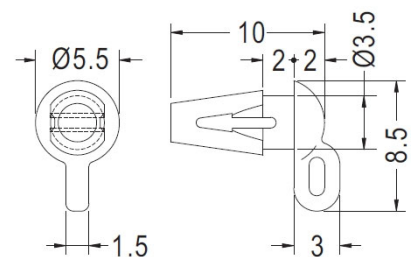
MOUNTING HOLE: ØG

| PART NO | A | B | C | D | E | F | G | I | J | K | PACKAGE |
|---------|-----|-----|------|-----|-----|------|-----|-----|-----|-----|---------|
| FS-M21 | 8.8 | 4.4 | 25.2 | 1.6 | 0.8 | 4.5 | 4.6 | 1.6 | 4.4 | 4.4 | 1000 |
| FS-M22 | 9.0 | 4.5 | 24.7 | 1.5 | 1.0 | 3.5 | 4.7 | 1.5 | 4.0 | 4.0 | 1000 |
| FS-M29 | 7.0 | 4.4 | 72.0 | 2.4 | 0.8 | 19.5 | 4.7 | 1.6 | 4.4 | 4.1 | 1000 |
| FS-M38 | 8.0 | 4.0 | 68.0 | 1.5 | 1.0 | 4.0 | 4.2 | 1.5 | 4.0 | 4.0 | 1000 |



MOUNTING HOLE Ø3.7

| PART NO | PACKAGE |
|---------|---------|
| FS-M04 | 1000 |



MOUNTING HOLE Ø3.7

| PART NO | PACKAGE |
|---------|---------|
| FS-M05 | 1000 |

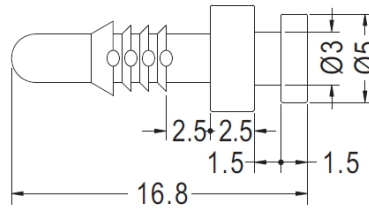
风扇铆钉 FAN SNAP RIVET



- ◆ MATERIAL : TPE
- ◆ G:HARDNESS IS SHORE A45
- ◆ H:HARDNESS IS SHORE A55
- ◆ COLOR : BLACK
- ◆ UNIT: mm

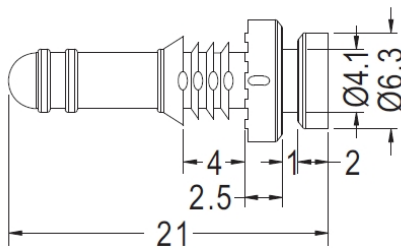
用途：风扇铆钉，用于计算机电源风扇的固定，降低噪音、牢固。

G:为45度硬度，H:为55度硬度



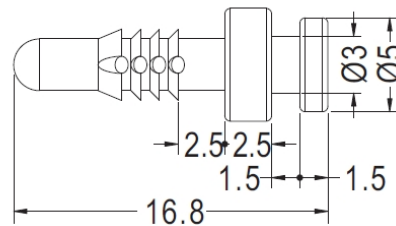
MOUNTING HOLE Ø3.2

| PART NO | PACKAGE |
|---------|---------|
| FS-M06 | 1000 |



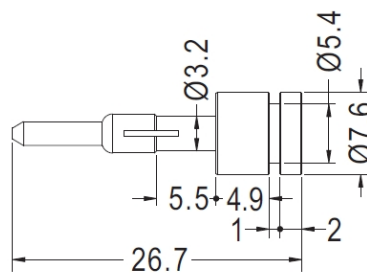
MOUNTING HOLE Ø4.3

| PART NO | PACKAGE |
|---------|---------|
| FS-M91 | 1000 |



MOUNTING HOLE Ø3.5

| PART NO | PACKAGE |
|---------|---------|
| FS-M92 | 1000 |



MOUNTING HOLE
CHASSIS THICKNESS 0.8

| PART NO | PACKAGE |
|---------|---------|
| FS-M83 | 1000 |

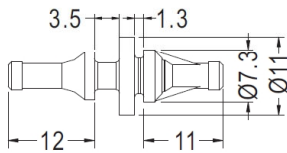
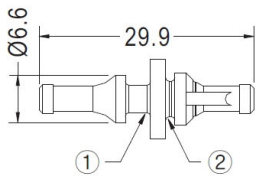
风扇铆钉 FAN MOUNTING BUTTON 铆钉



- ◆ MATERIAL : TPE
- ◆ G:HARDNESS IS SHORE A45
- ◆ H:HARDNESS IS SHORE A55
- ◆ COLOR : BLACK
- ◆ UNIT: mm

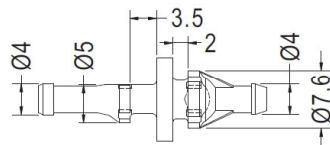
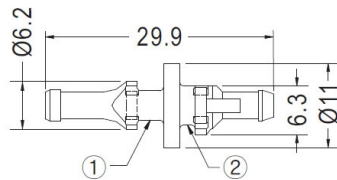
用途：风扇铆钉，用于计算机电源风扇之固定，降低噪音、牢固。

G:为45度硬度，H:为55度硬度



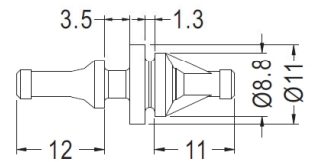
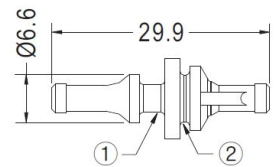
- ① Fan mounting hole $\text{Ø}4.5$ and thickness 3.0~5.5
- ② Support mounting hole $\text{Ø}5.0\pm0.1$ and thickness 1.0~2.0

| PART NO | PACKAGE |
|---------|---------|
| FS-M10 | 1000 |



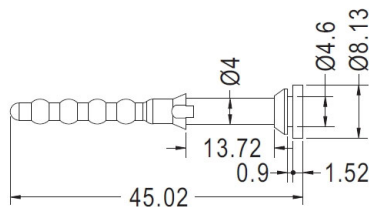
- ① Fan mounting hole $\text{Ø}4.5$ chassis thickness 3.5~4.0
- ② Support mounting hole $\text{Ø}4.5\sim4.8$ chassis thickness 0.8~2.0

| PART NO | PACKAGE |
|---------|---------|
| FS-M12 | 1000 |



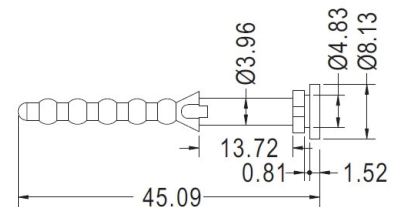
- ① Fan mounting hole $\text{Ø}4.6\pm0.2$ and thickness 3.0~5.5
- ② Support mounting hole $\text{Ø}6.5\pm0.1$ and thickness 1.0~2.0

| PART NO | PACKAGE |
|---------|---------|
| FS-M11 | 1000 |



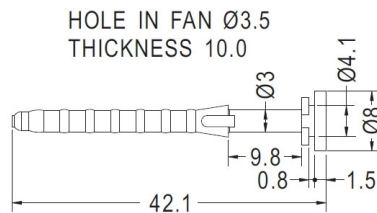
MOUNTING HOLE $\text{Ø}5.5$
THICKNESS 0.9

| PART NO | PACKAGE |
|---------|---------|
| FS-M93 | 1000 |



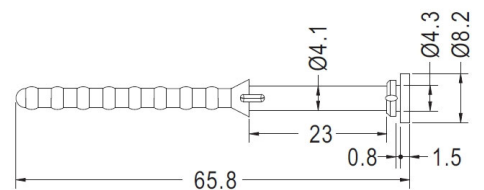
MOUNTING HOLE $\text{Ø}5.1$

| PART NO | PACKAGE |
|---------|---------|
| FS-M79 | 1000 |



CHASSIS $\text{Ø}4.4$
THICKNESS 0.8~1.0

| PART NO | PACKAGE |
|---------|---------|
| FS-M89 | 1000 |



CHASSIS $\text{Ø}4.4$

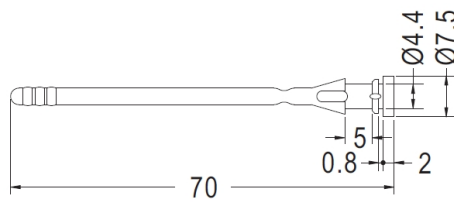
| PART NO | PACKAGE |
|---------|---------|
| FS-M31 | 1000 |

风扇铆钉 FAN SNAP RIVET



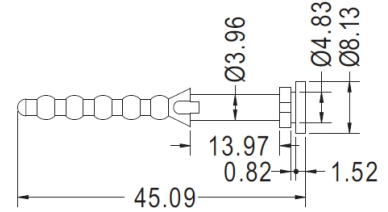
- ◆ MATERIAL : SILICON RUBBER
- ◆ COLOR : BLACK
- ◆ UNIT: mm

用途：风扇铆钉，用于计算机电源风扇的固定，降低噪音、牢固。



MOUNTING HOLE $\varnothing 4.5$

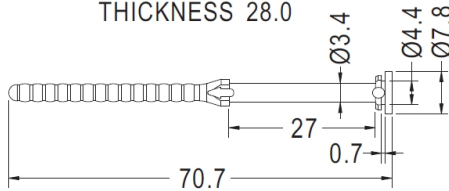
| PART NO | PACKAGE |
|---------|---------|
| FS-M44 | 1000 |



MOUNTING HOLE $\varnothing 5.1$

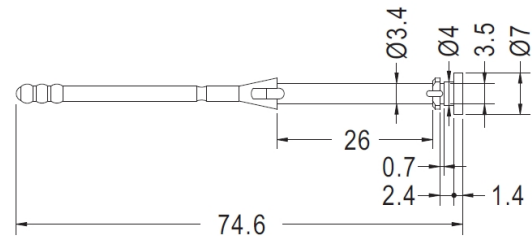
| PART NO | PACKAGE |
|---------|---------|
| FS-M45 | 1000 |

HOLE IN FAN $\varnothing 3.5$
THICKNESS 28.0



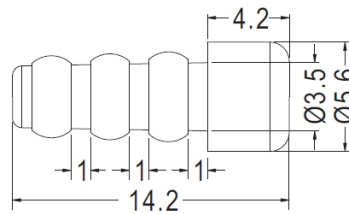
CHASSIS $\varnothing 4.5$
THICKNESS 0.8

| PART NO | PACKAGE |
|---------|---------|
| FS-M88 | 1000 |



MOUNTING HOLE $\varnothing 3.5$

| PART NO | PACKAGE |
|---------|---------|
| FS-M104 | 1000 |



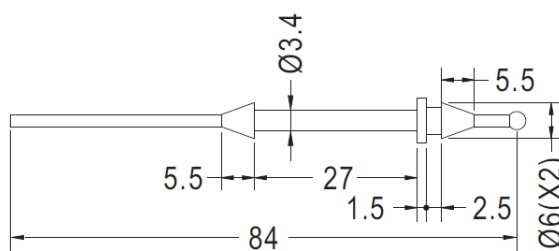
| PART NO | PACKAGE |
|---------|---------|
| FS-M46 | 1000 |



- ◆ MATERIAL : TPE
- ◆ G:HARDNESS IS SHORE A45
- ◆ H:HARDNESS IS SHORE A55
- ◆ COLOR : BLACK
- ◆ UNIT: mm

用途：风扇铆钉，用于计算机电源风扇之固定，降低噪音、牢固。

G:为45度硬度，H:为55度硬度



MOUNTING HOLE $\varnothing 4.3$

| PART NO | PACKAGE |
|---------|---------|
| FS-M90 | 1000 |

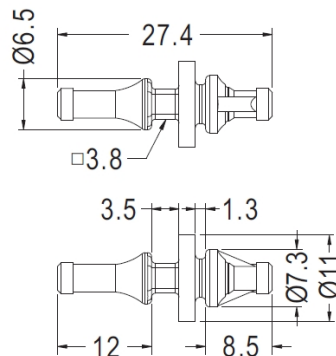
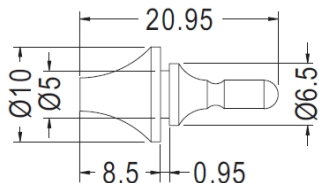
风扇铆钉 FAN MOUNTING BUTTON 铆钉



- ◆ MATERIAL : TPE
- ◆ G:HARDNESS IS SHORE A45
- ◆ H:HARDNESS IS SHORE A55
- ◆ COLOR : BLACK
- ◆ UNIT: mm

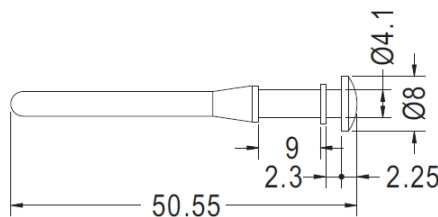
用途：风扇铆钉，用于计算机电源风扇之固定，降低噪音、牢固。

G:为45度硬度，H:为55度硬度



| PART NO | PACKAGE |
|---------|---------|
| FS-M56 | 1000 |

| PART NO | PACKAGE |
|---------|---------|
| FS-M102 | 1000 |



MOUNTING HOLE Ø4.3

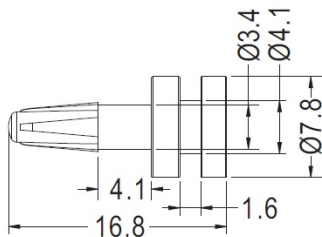
| PART NO | PACKAGE |
|---------|---------|
| FS-M116 | 1000 |



用途：风扇铆钉，用于计算机电源风扇之固定，降低噪音、牢固。

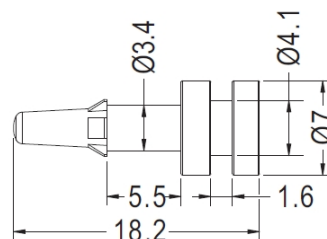
- ◆ MATERIAL : TPE
- ◆ FLAME CLASS : 94V-0
- ◆ COLOR : BLACK
- ◆ UNIT: mm

- ◆ MATERIAL : TPR
- ◆ COLOR : BLACK
- ◆ UNIT: mm



MOUNTING HOLE Ø4.3

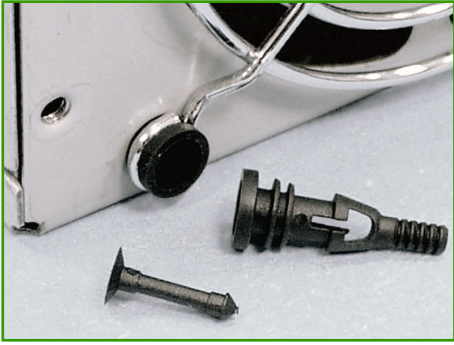
| PART NO | PACKAGE |
|---------|---------|
| FS-M105 | 1000 |



MOUNTING HOLE Ø4.3

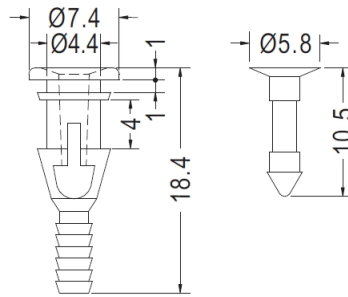
| PART NO | PACKAGE |
|---------|---------|
| FS-M115 | 1000 |

风扇铆钉 FAN SNAP RIVET



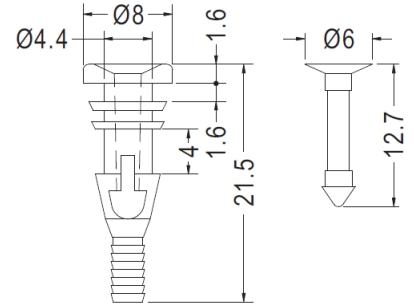
- ◆ BODY MATERIAL : TPE
- ◆ PIN MATERIAL : NYLON 66(UL)
- ◆ FLAME CLASS : 94V-0
- ◆ COLOR : BLACK
- ◆ UNIT: mm

用途：风扇铆钉，用于计算机电源风扇的固定，降低噪音、牢固。



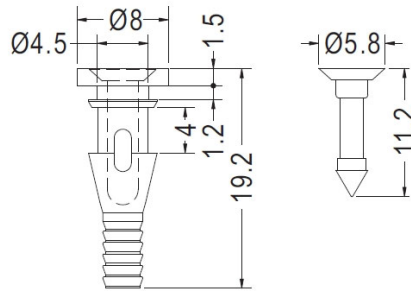
CHASSIS HOLE Ø4.8~Ø5.0

| PART NO | PACKAGE |
|---------|---------|
| FS-M57 | 1000 |



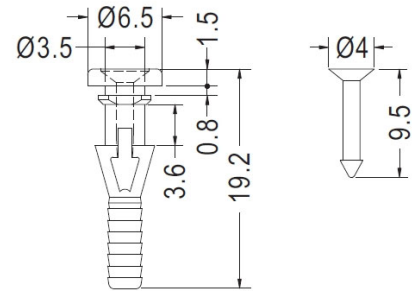
CHASSIS HOLE Ø4.8~Ø5.0

| PART NO | PACKAGE |
|---------|---------|
| FS-M58 | 1000 |



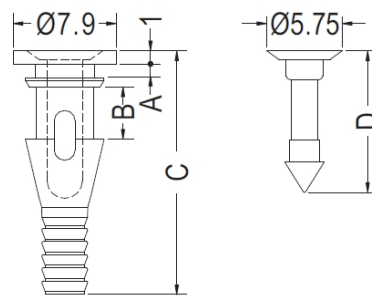
MOUNTING HOLE Ø4.5

| PART NO | PACKAGE |
|---------|---------|
| FS-M59 | 1000 |



MOUNTING HOLE Ø3.5

| PART NO | PACKAGE |
|---------|---------|
| FS-M97 | 1000 |



CHASSIS: ØG

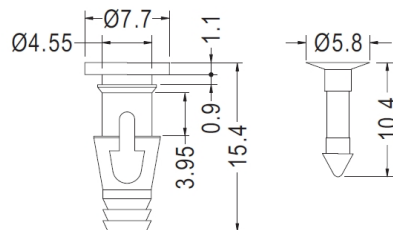
| PART NO | A | B | C | D | G | PACKAGE |
|---------|------|-----|-------|------|---------|---------|
| FS-M60 | 1.05 | 3.9 | 18.55 | 10.8 | 4.5~4.7 | 1000 |
| FS-M61 | 0.9 | 3.9 | 14.3 | 10.8 | 4.5~4.7 | 1000 |
| FS-M62 | 1.6 | 5.0 | 20.1 | 12.1 | 4.5 | 1000 |

风扇铆钉 FAN MOUNTING BUTTON 铆钉



- ◆ MATERIAL : TPU
- ◆ FLAME CLASS : 94V-2
- ◆ PIN MATERIAL : NYLON 66(UL)
- ◆ COLOR : BLACK
- ◆ UNIT: mm

用途：风扇铆钉，用于计算机电源风扇之固定，降低噪音、牢固。



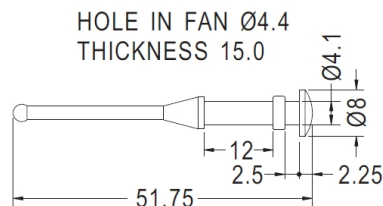
CHASSIS HOLE Ø4.5~Ø4.7

| PART NO | PACKAGE |
|---------|---------|
| FS-M63 | 1000 |



- ◆ MATERIAL : SILICON RUBBER
- ◆ COLOR : BLACK
- ◆ UNIT: mm

用途：风扇铆钉，用于计算机电源风扇之固定，降低噪音、牢固。



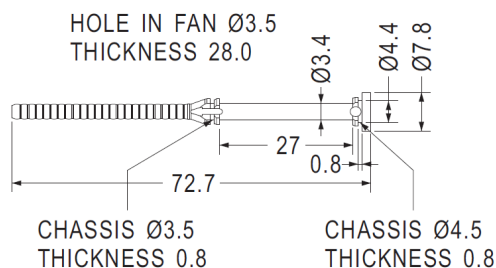
CHASSIS Ø4.4
THICKNESS 2.5

| PART NO | PACKAGE |
|---------|---------|
| FS-M73 | 1000 |



- ◆ MATERIAL : SILICON RUBBER
- ◆ FLAME CLASS: 94V-0
- ◆ COLOR : BLACK
- ◆ UNIT: mm

用途：风扇铆钉，用于计算机电源风扇之固定，降低噪音、牢固。

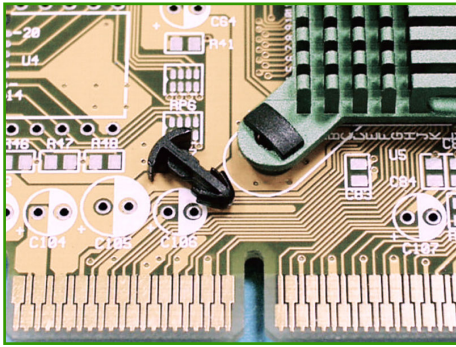


CHASSIS Ø3.5
THICKNESS 0.8

CHASSIS Ø4.5
THICKNESS 0.8

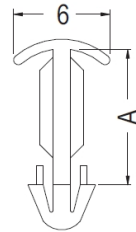
| PART NO | PACKAGE |
|---------|---------|
| FS-M117 | 1000 |

散热片扣件 HEAT SINK RIVET

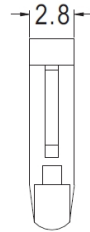


- ◆ MATERIAL : NYLON 66 (UL)
- ◆ FLAME CLASS : 94V-0/94V-2
- ◆ COLOR : BLACK/NATURAL
- ◆ UNIT: mm

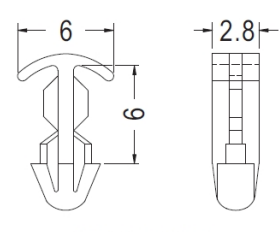
用途：散热片扣件，用于两片零件间之固定。



P.C.B Ø3.0



| PART NO | A | PACKAGE |
|---------|-----|---------|
| FS-M64 | 6.0 | 2000 |
| FS-M65 | 7.0 | 2000 |
| FS-M66 | 8.0 | 2000 |



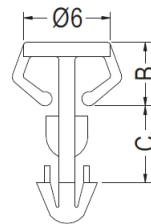
P.C.B Ø3.0

| PART NO | PACKAGE |
|---------|---------|
| FS-M67 | 2000 |

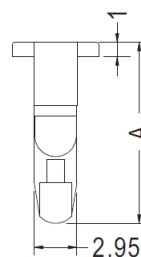


- ◆ MATERIAL : NYLON 66 (UL)
- ◆ FLAME CLASS : 94V-0/94V-2
- ◆ COLOR : BLACK/NATURAL
- ◆ UNIT: mm

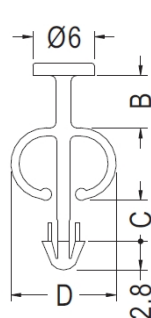
用途：散热片扣件，用于PC板上IC与散热片间固定，方便、牢固。



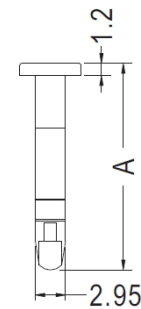
CHASSIS Ø3.0



| PART NO | A | B | C | PACKAGE |
|---------|------|-----|-----|---------|
| FS-M68 | 12.5 | 4.4 | 5.3 | 2000 |
| FS-M69 | 12.7 | 5.3 | 4.7 | 2000 |
| FS-M70 | 10.3 | 5.0 | 2.5 | 2000 |

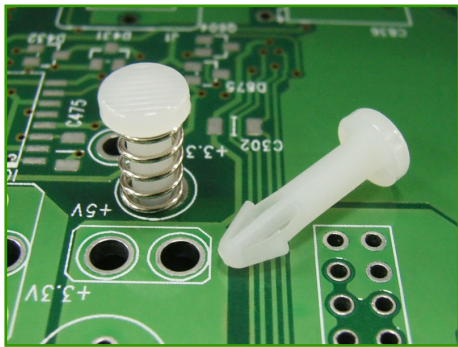


CHASSIS Ø3.0



| PART NO | A | B | C | D | PACKAGE |
|---------|------|-----|-----|------|---------|
| FS-M71 | 20.3 | 5.1 | 4.0 | 10.1 | 2000 |
| FS-M72 | 17.0 | 2.5 | 3.4 | 10.3 | 2000 |

散热片扣件 HEAT SINK RIVET 弹簧铆钉 散热铆钉



- ◆ MATERIAL : NYLON 66 (UL)
- ◆ FLAME CLASS : 94V-0/94V-2
- ◆ COLOR : BLACK/NATURAL
- ◆ UNIT: mm

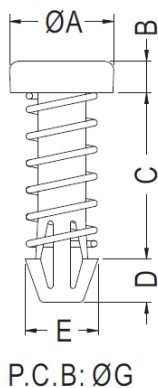
用途：散热片扣件，用于PC板上IC与散热片间固定，方便、牢固。

- PC板 $\varnothing 3.5$ 散热片孔径建议 $\varnothing 3.7$
- ▣PC板 $\varnothing 4.0$ 散热片孔径建议 $\varnothing 4.2 \sim \varnothing 4.3$
- ▣弹簧尺寸可依客户订制

Applications: Use on PC Boards and affix Heat Sinks, stable and easy to use.

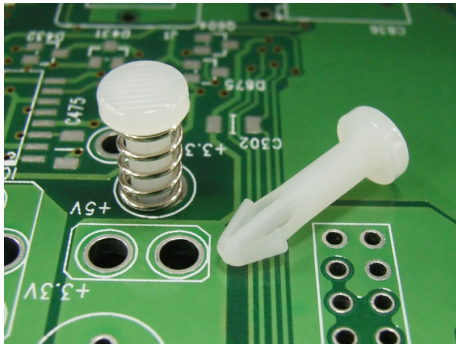
- PC Boards $\varnothing 3.0$, suggests for a Heat Sink of $\varnothing 3.2$ in diameter.
- PC Boards $\varnothing 3.5$, suggests for a Heat Sink of $\varnothing 3.7$ in diameter.
- PC Boards $\varnothing 4.0$, suggests for a Heat Sink of $\varnothing 4.2 - 4.3$ in diameter.
- Custom spring sizes are available upon request.

PC板 $\varnothing 3.0$ 散热片孔径建议 $\varnothing 3.2$



| PART NO | A | B | C | D | E | G | PACKAGE |
|---------|------|------|-------|-----|-----|-----|---------|
| HSRL-1 | 6.4 | 1.5 | 11.4 | 2.6 | 4.3 | 3.0 | 1000 |
| HSRL-2 | 5.5 | 1.5 | 14.0 | 2.8 | 4.1 | 3.0 | 1000 |
| HSRL-3 | 5.5 | 1.6 | 11.4 | 3.0 | 4.0 | 3.0 | 1000 |
| HSRL-4 | 6.4 | 1.5 | 11.5 | 2.5 | 4.8 | 3.5 | 1000 |
| HSRL-6 | 5.0 | 1.75 | 12.32 | 2.5 | 4.3 | 3.0 | 1000 |
| HSRL-7 | 6.4 | 1.5 | 11.4 | 2.5 | 4.5 | 3.0 | 1000 |
| HSRL-8 | 5.5 | 1.5 | 9.0 | 1.9 | 3.6 | 3.0 | 1000 |
| HSRL-9 | 6.2 | 1.0 | 9.0 | 2.5 | 4.3 | 3.0 | 1000 |
| HSRL-10 | 5.5 | 1.5 | 9.0 | 3.5 | 4.3 | 3.0 | 1000 |
| HSRL-11 | 6.3 | 0.8 | 5.7 | 2.1 | 4.2 | 3.0 | 1000 |
| HSRL-12 | 6.4 | 1.5 | 11.4 | 2.5 | 4.8 | 3.5 | 1000 |
| HSRL-14 | 4.3 | 1.5 | 11.5 | 2.5 | 4.3 | 3.0 | 1000 |
| HSRL-15 | 6.4 | 1.5 | 8.7 | 2.5 | 4.3 | 3.0 | 1000 |
| HSRL-16 | 6.35 | 1.5 | 8.7 | 2.5 | 4.0 | 3.0 | 1000 |
| HSRL-17 | 6.4 | 1.5 | 10.6 | 2.5 | 4.3 | 3.0 | 1000 |
| HSRL-18 | 6.4 | 1.5 | 11.5 | 2.5 | 4.4 | 3.0 | 1000 |
| HSRL-19 | 6.4 | 2.75 | 21.0 | 2.5 | 4.3 | 3.0 | 1000 |
| HSRL-20 | 6.2 | 1.0 | 7.8 | 2.5 | 4.2 | 3.0 | 1000 |
| HSRL-21 | 6.2 | 1.0 | 7.0 | 2.5 | 4.3 | 3.0 | 1000 |
| HSRL-24 | 5.0 | 1.75 | 8.3 | 2.5 | 4.3 | 3.0 | 1000 |
| HSRL-25 | 5.5 | 1.5 | 8.7 | 3.6 | 4.0 | 3.0 | 1000 |
| HSRL-28 | 6.3 | 1.5 | 11.5 | 2.2 | 4.2 | 3.0 | 1000 |
| HSRL-29 | 6.5 | 1.5 | 11.1 | 3.5 | 5.4 | 4.0 | 1000 |
| HSRL-35 | 6.0 | 1.9 | 17.6 | 2.5 | 4.2 | 3.0 | 1000 |
| HSRL-36 | 5.5 | 1.5 | 10.0 | 2.5 | 4.3 | 3.0 | 1000 |
| HSRL-61 | 5.5 | 1.5 | 12.0 | 2.5 | 4.3 | 3.0 | 1000 |

散热片扣件 HEAT SINK RIVET 弹簧铆钉 散热铆钉



- ◆ MATERIAL : NYLON 66 (UL)
- ◆ FLAME CLASS : 94V-0/94V-2
- ◆ COLOR : BLACK/NATURAL
- ◆ UNIT: mm

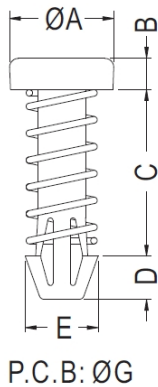
用途：散热片扣件，用于PC板上IC与散热片间固定，方便、牢固。

- PC板 $\varnothing 3.5$ 散热片孔径建议 $\varnothing 3.7$
- ▣PC板 $\varnothing 4.0$ 散热片孔径建议 $\varnothing 4.2 \sim \varnothing 4.3$
- ▣弹簧尺寸可依客户订制

Applications: Use on PC Boards and affix Heat Sinks, stable and easy to use.

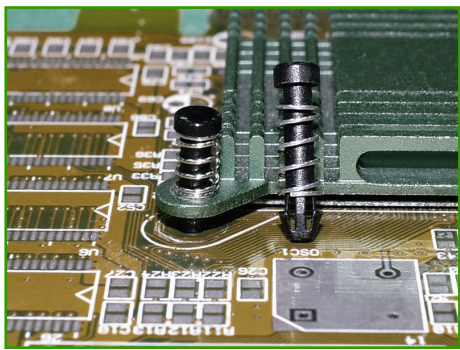
- PC Boards $\varnothing 3.0$, suggests for a Heat Sink of $\varnothing 3.2$ in diameter.
- PC Boards $\varnothing 3.5$, suggests for a Heat Sink of $\varnothing 3.7$ in diameter.
- PC Boards $\varnothing 4.0$, suggests for a Heat Sink of $\varnothing 4.2 - 4.3$ in diameter.
- Custom spring sizes are available upon request.

PC板 $\varnothing 3.0$ 散热片孔径建议 $\varnothing 3.2$



| PART NO | A | B | C | D | E | G | PACKAGE |
|---------|-----|-----|-------|------|------|------|---------|
| HSRL-38 | 8.0 | 1.6 | 15.5 | 3.3 | 5.3 | 3.8 | 1000 |
| HSRL-39 | 8.0 | 1.6 | 16.5 | 3.3 | 5.5 | 4.0 | 1000 |
| HSRL-40 | 5.5 | 1.0 | 7.4 | 2.1 | 4.2 | 3.0 | 1000 |
| HSRL-41 | 6.5 | 1.5 | 11.1 | 3.5 | 5.15 | 4.0 | 1000 |
| HSRL-42 | 5.5 | 0.8 | 6.6 | 2.1 | 4.2 | 3.0 | 1000 |
| HSRL-44 | 4.7 | 1.2 | 12.7 | 2.0 | 3.6 | 2.7 | 1000 |
| HSRL-45 | 6.3 | 1.5 | 25.5 | 2.7 | 4.0 | 3.0 | 1000 |
| HSRL-46 | 6.4 | 1.5 | 10.6 | 2.5 | 4.3 | 3.0 | 1000 |
| HSRL-47 | 5.5 | 1.5 | 9.0 | 1.9 | 3.8 | 3.2 | 1000 |
| HSRL-48 | 6.6 | 1.5 | 22.7 | 3.85 | 5.35 | 4.0 | 1000 |
| HSRL-49 | 6.2 | 1.2 | 11.0 | 1.5 | 4.3 | 3.0 | 1000 |
| HSRL-50 | 5.5 | 1.5 | 11.0 | 1.9 | 3.6 | 3.0 | 1000 |
| HSRL-51 | 8.0 | 1.5 | 15.8 | 4.0 | 5.5 | 4.0 | 1000 |
| HSRL-52 | 8.0 | 1.5 | 15.85 | 2.7 | 5.5 | 4.0 | 1000 |
| HSRL-60 | 5.8 | 1.5 | 17.0 | 1.7 | 4.3 | 3.0 | 1000 |
| HSRL-66 | 6.4 | 1.6 | 12.7 | 2.8 | 4.3 | 3.0 | 1000 |
| HSRL-68 | 6.4 | 1.8 | 14.0 | 3.3 | 4.0 | 3.0 | 1000 |
| HSRL-69 | 6.2 | 1.2 | 13.5 | 1.3 | 4.3 | 3.0 | 1000 |
| HSRL-70 | 5.5 | 0.8 | 8.4 | 2.1 | 4.2 | 3.0 | 1000 |
| HSRL-71 | 6.2 | 1.0 | 7.4 | 2.5 | 4.3 | 3.05 | 1000 |
| HSRL-72 | 6.2 | 1.2 | 11.0 | 2.5 | 4.3 | 3.05 | 1000 |
| HSRL-73 | 6.4 | 1.5 | 12.8 | 2.5 | 4.3 | 3.05 | 1000 |
| HSRL-76 | 6.4 | 1.5 | 9.9 | 2.5 | 4.0 | 2.85 | 1000 |

散热片扣件 HEAT SINK RIVET 弹簧铆钉 散热铆钉



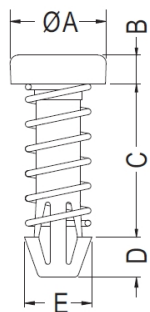
- ◆ MATERIAL : NYLON 66 (UL)
- ◆ FLAME CLASS : 94V-0/94V-2
- ◆ COLOR : BLACK/NATURAL
- ◆ UNIT: mm

用途：散热片扣件，用于PC板上IC与散热片间固定，方便、牢固。

- PC板 $\varnothing 2.5$ 散热片孔径建议开 $\varnothing 2.7$
- ▣PC板 $\varnothing 2.7$ 散热片孔径建议开 $\varnothing 2.9$
- ▣PC板 $\varnothing 3.0$ 散热片孔径建议开 $\varnothing 3.2$
- ▣弹簧尺寸可依客户订制

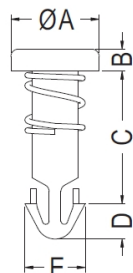
Applications: Use on PC Boards and affix Heat Sinks, stable and easy to use.

- PC Boards $\varnothing 2.5$, suggests for a Heat Sink Of $\varnothing 2.7$ in diameter
- PC Boards $\varnothing 2.7$, suggests for a Heat Sink Of $\varnothing 2.9$ in diameter
- PC Boards $\varnothing 3.0$, suggests for a Heat Sink Of $\varnothing 3.2$ in diameter
- Custom spring sizes are available upon request



P.C.B: $\varnothing G$

| PART NO | A | B | C | D | E | G | PACK-AGE |
|---------|-----|-----|------|-----|-----|-----|----------|
| HSRL-5 | 6.4 | 0.9 | 9.5 | 3.3 | 4.0 | 3.0 | 1000 |
| HSRL-27 | 4.6 | 5.9 | 13.0 | 3.5 | 4.2 | 3.0 | 1000 |
| HSRL-58 | 6.0 | 1.8 | 9.6 | 2.5 | 4.0 | 3.0 | 1000 |
| HSRL-65 | 4.7 | 1.2 | 11.8 | 2.0 | 3.6 | 2.7 | 1000 |



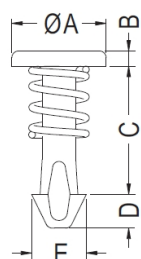
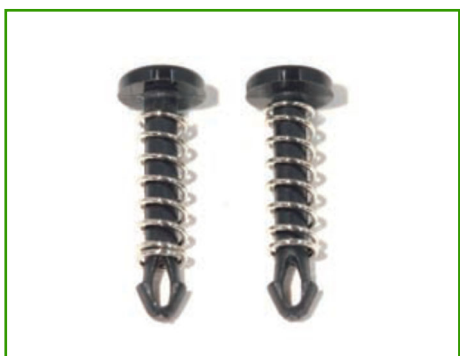
P.C.B: $\varnothing G$

- PC板 $\varnothing 3.0$ 散热片孔径建议开 $\varnothing 3.2$
- PC板 $\varnothing 3.5$ 散热片孔径建议开 $\varnothing 3.7$
- ▣PC板 $\varnothing 4.0$ 散热片孔径建议开 $\varnothing 4.2 \sim \varnothing 4.3$
- ▣弹簧尺寸可依客户订制

Applications: Use on PC Boards and affix Heat Sinks, stable and easy to use.

- PC Boards $\varnothing 3.0$, suggests for a Heat Sink of $\varnothing 3.2$ in diameter
- PC Boards $\varnothing 3.5$, suggests for a Heat Sink of $\varnothing 3.7$ in diameter
- PC Boards $\varnothing 4.0$, suggests for a Heat Sink of $\varnothing 4.2 - 4.3$ In diameter
- Custom spring sizes are available upon request

| PART NO | A | B | C | D | E | G | PACKAGE |
|---------|-----|-----|------|-----|-----|-----|---------|
| HSRL-13 | 6.0 | 1.5 | 93.0 | 2.4 | 4.1 | 3.2 | 1000 |
| HSRL-26 | 6.4 | 1.6 | 12.7 | 3.2 | 4.2 | 3.0 | 1000 |
| HSRL-43 | 6.3 | 0.8 | 5.7 | 2.7 | 4.2 | 3.0 | 1000 |



P.C.B: $\varnothing G$

| PART NO | A | B | C | D | E | G | PACKAGE |
|---------|-----|-----|------|-----|-----|-----|---------|
| HSRL-30 | 5.6 | 1.0 | 10.0 | 2.0 | 2.0 | 1.5 | 1000 |
| HSRL-31 | 4.7 | 1.2 | 12.4 | 2.0 | 3.1 | 2.3 | 1000 |
| HSRL-53 | 5.0 | 1.0 | 10.0 | 2.0 | 2.0 | 1.5 | 1000 |
| HSRL-54 | 5.6 | 1.2 | 12.7 | 2.0 | 3.1 | 2.3 | 1000 |
| HSRL-55 | 5.6 | 0.9 | 11.6 | 2.0 | 3.3 | 2.2 | 1000 |
| HSRL-56 | 5.0 | 1.0 | 10.0 | 2.0 | 2.2 | 1.7 | 1000 |
| HSRL-57 | 4.7 | 1.2 | 12.4 | 1.5 | 3.1 | 2.3 | 1000 |
| HSRL-64 | 4.5 | 0.9 | 7.7 | 2.0 | 3.3 | 2.2 | 1000 |

散热片扣件 HEAT SINK RIVET 弹簧铆钉 散热铆钉



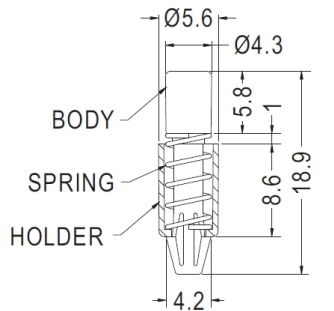
- ◆ MATERIAL : NYLON 66 (UL)
- ◆ FLAME CLASS : 94V-0/94V-2
- ◆ COLOR : BLACK/NATURAL
- ◆ UNIT: mm

用途：散热片扣件，用于PC板上IC与散热片间固定，方便、牢固。

·PC板Ø3.0散热片孔径建议开Ø3.2

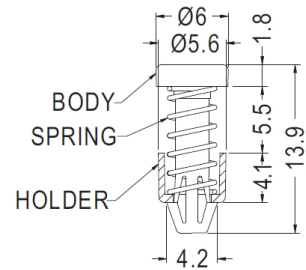
Applications: Use on PC Boards and affix Heat Sinks, stable and easy to use.

·PC Boards Ø 3.0, suggests for a Heat Sink Of Ø3.2 in diameter



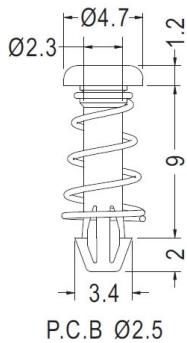
HOLE IN P.C.B Ø3.0
HOLE IN HEAT SINK Ø3.2

| PART NO | PACKAGE |
|---------|---------|
| HSRL-22 | 1000 |



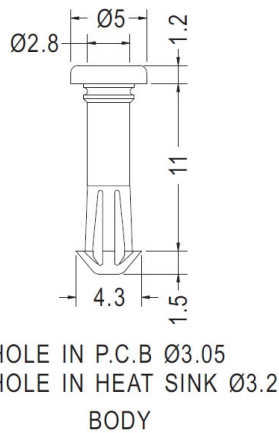
HOLE IN P.C.B Ø3.0
P.C.B THICKNESS 1.2~1.7

| PART NO | PACKAGE |
|---------|---------|
| HSRL-23 | 1000 |



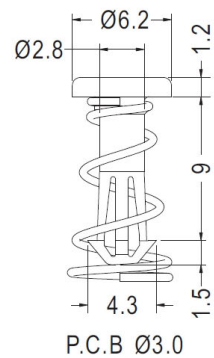
P.C.B Ø2.5

| PART NO | PACKAGE |
|---------|---------|
| HSRL-32 | 1000 |



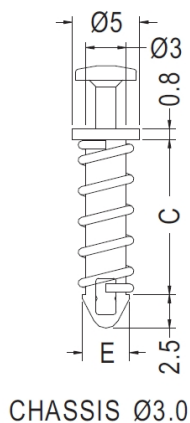
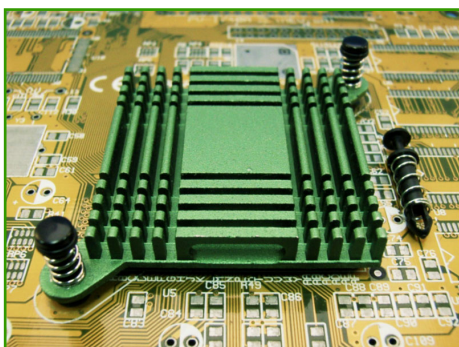
HOLE IN P.C.B Ø3.05
HOLE IN HEAT SINK Ø3.2
BODY

| PART NO | PACKAGE |
|---------|---------|
| HSRL-75 | 1000 |



P.C.B Ø3.0

| PART NO | PACKAGE |
|---------|---------|
| HSRL-59 | 1000 |



CHASSIS Ø3.0

| PART NO | C | E | PACKAGE |
|---------|------|-----|---------|
| HSRL-33 | 11.5 | 3.5 | 1000 |
| HSRL-34 | 8.5 | 3.7 | 1000 |

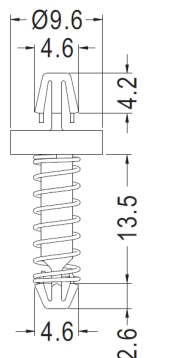
散热片扣件 HEAT SINK RIVET 弹簧铆钉 散热铆钉



- ◆ MATERIAL : NYLON 66 (UL)
- ◆ FLAME CLASS : 94V-0/94V-2
- ◆ COLOR : BLACK/NATURAL
- ◆ UNIT: mm

用途：散热片扣件，用于PC板上IC与散热片间固定，方便、牢固。

HOLE IN P.C.B Ø3.5
THICKNESS 1.6

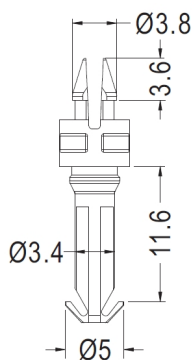


HOLE IN P.C.B Ø3.5

| PART NO | PACKAGE |
|---------|---------|
| HSRL-62 | 1000 |

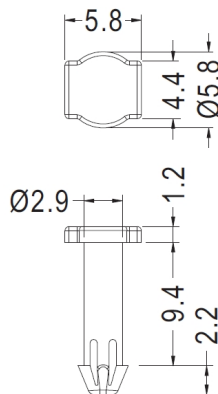


P.C.B Ø3.3
THICKNESS 1.6



P.C.B Ø4.0
THICKNESS 0.8~1.0

| PART NO | PACKAGE |
|---------|---------|
| HSRL-67 | 1000 |



HOLE IN P.C.B Ø3.0
HOLE HEAT SINK Ø3.2

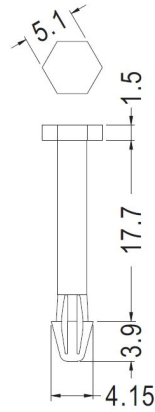
| PART NO | PACKAGE |
|---------|---------|
| HSRL-63 | 1000 |

散热片扣件 HEAT SINK RIVET 弹簧铆钉 散热铆钉



- ◆ MATERIAL : NYLON 66 (UL)
- ◆ FLAME CLASS : 94V-0/94V-2
- ◆ COLOR : BLACK/NATURAL
- ◆ UNIT: mm

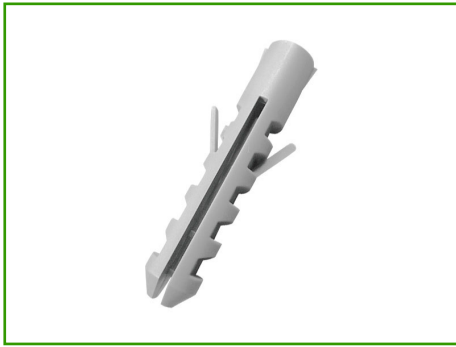
用途：散热片扣件，用于PC板上IC与散热片间固定，方便、牢固。



HOLE IN P.C.B Ø3.0
HOLE HEAT SINK Ø3.2~Ø3.4

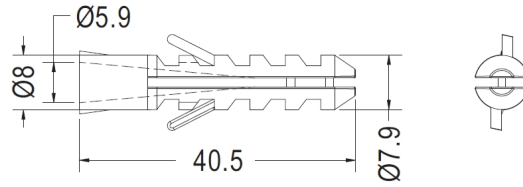
| PART NO | PACKAGE |
|---------|---------|
| HSRL-74 | 1000 |

螺丝固定座 PLASTIC CONICAL ANCHOR 膨胀螺栓 墙塞 壁虎 无帽鱼型膨胀管 墙面固定座



- ◆ MATERIAL : PP
- ◆ COLOR : GRAY
- ◆ UNIT: mm

用途：螺丝固定座，用于螺丝与墙壁固定，结合力强。



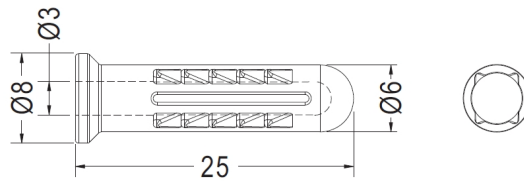
可與STP5-32自攻螺絲配合使用

| PART NO | PACKAGE |
|---------|---------|
| LESS-01 | 1000 |



- ◆ MATERIAL : PP / PE
- ◆ COLOR : NATURAL / WHITE
- ◆ UNIT: mm

用途：螺丝固定座，用于螺丝与墙壁固定，结合力强。

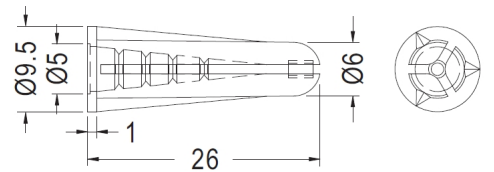
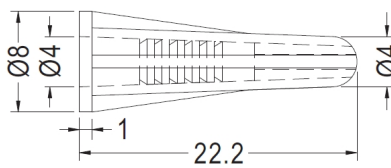


| PART NO | PACKAGE |
|---------|---------|
| LESS-02 | 1000 |



- ◆ MATERIAL : NYLON 66 (UL)
- ◆ FLAME CLASS : 94V-0/94V-2
- ◆ COLOR : BLACK/NATURAL
- ◆ UNIT: mm
- ◆ DRILL SIZE : 3/16(φ4.8)

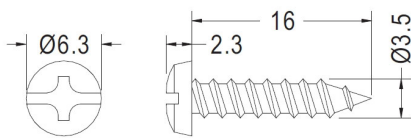
用途：螺丝固定座，用于螺丝与墙壁固定，结合力强。



• Drill Size: Ø6.3

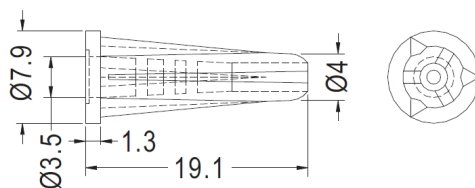
| PART NO | PACKAGE |
|---------|---------|
| LESS-03 | 1000 |

| PART NO | PACKAGE |
|---------|---------|
| LESS-06 | 1000 |

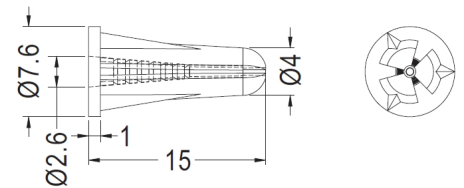


- Material: Steel
- Finish: Nickel Plated

| PART NO | PACKAGE |
|---------|---------|
| LESS-04 | 1000 |



| PART NO | PACKAGE |
|---------|---------|
| LESS-08 | 1000 |



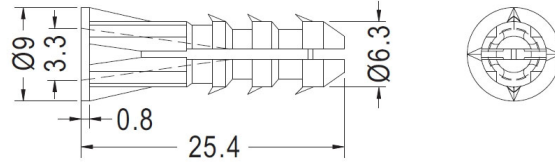
| PART NO | PACKAGE |
|---------|---------|
| LESS-10 | 1000 |

螺丝固定座 PLASTIC CONICAL ANCHOR 膨胀螺栓 墙塞 壁虎 无帽鱼型膨胀管 墙面固定座



- ◆ MATERIAL : PP
- ◆ COLOR : GRAY/BLACK
- ◆ UNIT: mm
- ◆ DRILL SIZE: $\phi 6.3$

用途：螺丝固定座，用于螺丝与墙壁固定，结合力强。

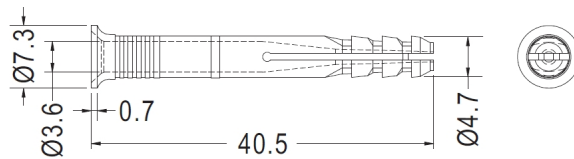


| PART NO | PACKAGE |
|---------|---------|
| LESS-05 | 1000 |



- ◆ MATERIAL : NYLON 66 (UL)
- ◆ FLAME CLASS : 94V-0/94V-2
- ◆ COLOR : BLACK/NATURAL
- ◆ UNIT: mm
- ◆ DRILL SIZE : $\phi 4.8$

用途：螺丝固定座，用于螺丝与墙壁固定，结合力强。

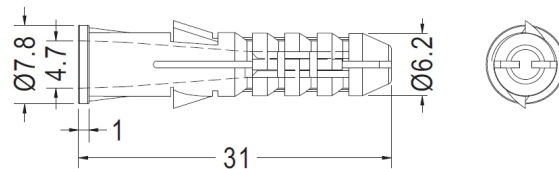


| PART NO | PACKAGE |
|---------|---------|
| LESS-07 | 1000 |



- ◆ MATERIAL : PP
- ◆ COLOR : NATURAL/YELLOW
- ◆ UNIT: mm
- ◆ DRILL SIZE : $\phi 6.35$

用途：螺丝固定座，用于螺丝与墙壁固定，结合力强。



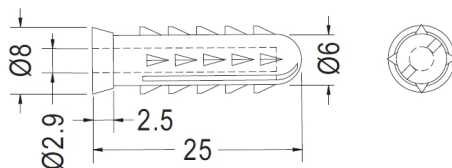
| PART NO | PACKAGE |
|---------|---------|
| LESS-20 | 1000 |

螺丝固定座 PLASTIC CONICAL ANCHOR 膨胀螺栓 墙塞 壁虎 无帽鱼型膨胀管 墙面固定座



- ◆ MATERIAL : PP
- ◆ COLOR : NATURAL
- ◆ UNIT: mm
- ◆ DRILL SIZE : $\phi 6.3$

用途：螺丝固定座，用于螺丝与墙壁固定，结合力强。

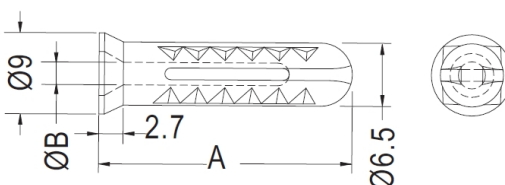


| PART NO | PACKAGE |
|---------|---------|
| LESS-11 | 1000 |



- ◆ MATERIAL : NYLON 66 (UL)/PP
- ◆ FLAME CLASS : 94V-0/94V-2
- ◆ COLOR : BLACK/NATURAL/WHITE
- ◆ UNIT: mm

用途：螺丝固定座，用于螺丝与墙壁固定，结合力强。

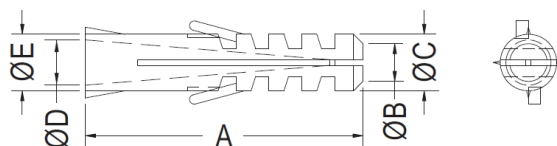


| PART NO | A | B | PACKAGE |
|---------|------|-----|---------|
| LESS-12 | 28.1 | 2.5 | 1000 |
| LESS-18 | 30.0 | 3.1 | 1000 |



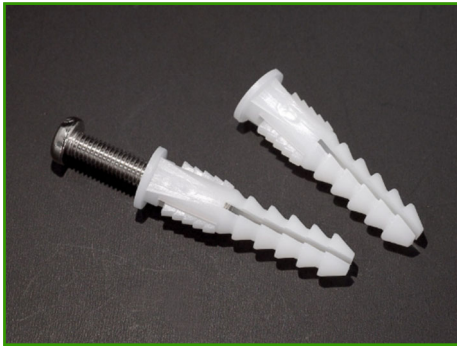
- ◆ MATERIAL : NYLON 66 (UL)/PP(UL)
- ◆ FLAME CLASS : 94V-0/94V-2/94HB
- ◆ COLOR : BLACK/NATURAL/WHITE/GRAY
- ◆ UNIT: mm

用途：螺丝固定座，用于螺丝与墙壁固定，结合力强。



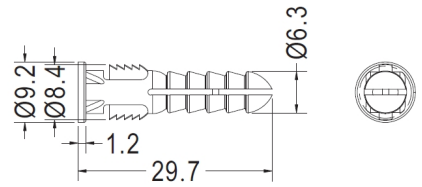
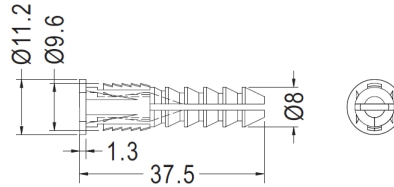
| PART NO | A | B | C | D | E | PACKAGE |
|---------|------|-----|-----|-----|-----|---------|
| LESS-13 | 20.1 | 2.8 | 4.0 | 2.9 | 4.0 | 1000 |
| LESS-14 | 24.7 | 3.5 | 4.8 | 4.0 | 5.0 | 1000 |
| LESS-15 | 29.6 | 4.0 | 6.0 | 4.8 | 6.0 | 1000 |
| LESS-16 | 29.6 | 3.5 | 6.0 | 4.0 | 6.0 | 1000 |

螺丝固定座 PLASTIC CONICAL ANCHOR 膨胀螺栓 墙塞 壁虎 无帽鱼型膨胀管 墙面固定座



用途：螺丝固定座，用于螺丝与墙壁固定，结合力强。

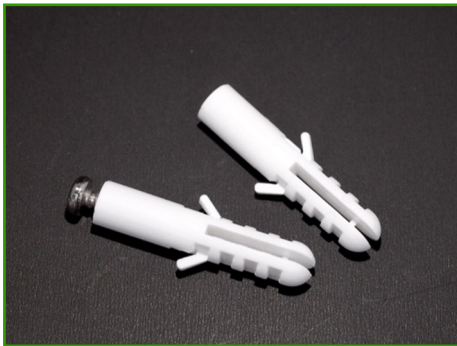
- ◆ MATERIAL : PP/NYLON 66 (UL)
- ◆ FLAME CLASS : 94V-0/94V-2
- ◆ COLOR : NATURAL
- ◆ UNIT: mm
- ◆ MATERIAL : NYLON 66 (UL)
- ◆ FLAME CLASS : 94V-0/94V-2
- ◆ COLOR : NATURAL/BLACK
- ◆ UNIT: mm



可與STP5-32自攻螺絲配合使用

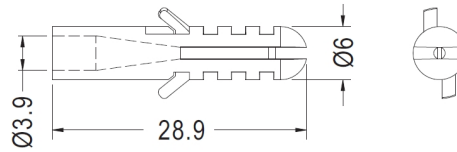
| PART NO | PACKAGE |
|---------|---------|
| LESS-17 | 1000 |

| PART NO | PACKAGE |
|---------|---------|
| LESS-21 | 1000 |



- ◆ MATERIAL : PP
- ◆ COLOR : NATURAL
- ◆ UNIT: mm

用途：螺丝固定座，用于螺丝与墙壁固定，结合力强。



MOUNTING HOLE Ø6.35

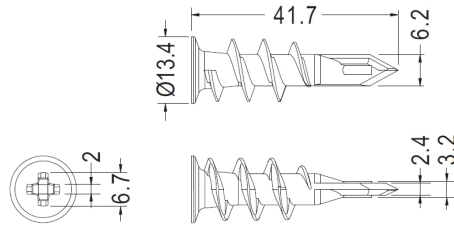
| PART NO | PACKAGE |
|---------|---------|
| LESS-19 | 1000 |

石膏板固定座 PLASTIC CONICAL ANCHOR 石膏型膨胀管 螺旋膨胀管

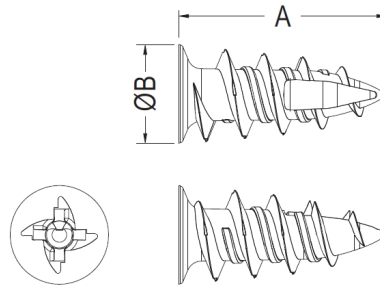


- ◆ MATERIAL : PBT (UL)
- ◆ FLAME CLASS : 94V-0
- ◆ COLOR : WHITE
- ◆ UNIT: mm

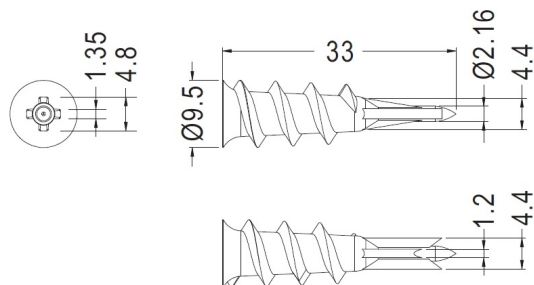
用途：石膏板固定座，用于螺丝与石膏墙壁固定，结合力强。



| PART NO | PACKAGE |
|---------|---------|
| KMEZ-1 | 1000 |



| PART NO | A | B | PACKAGE |
|---------|------|------|---------|
| KMEZ-2 | 25.0 | 11.8 | 1000 |
| KMEZ-5 | 37.6 | 14.9 | 1000 |

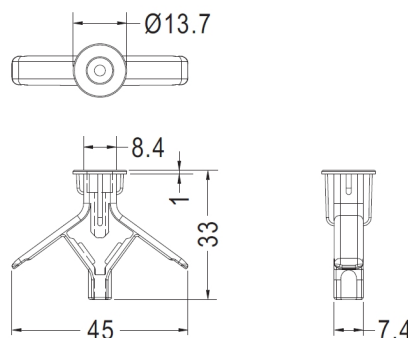


| PART NO | PACKAGE |
|---------|---------|
| KMEZ-3 | 1000 |



- ◆ MATERIAL : PP
- ◆ COLOR : NATURAL
- ◆ UNIT: mm

用途：石膏板固定座，用于螺丝与石膏墙壁固定，结合力强。



| PART NO | PACKAGE |
|---------|---------|
| KMEZ-4 | 1000 |

MOUNTING HOLE Ø9.5

电子电脑塑胶五金零件目录

1.LED间隔柱

2.LED导光柱 LED导光盖 LED遮光罩

3.LED座 LED座套 红外线灯罩 光纤座

4.90°LED灯座 45°LED灯座

5. PC板间隔柱 PC板隔离柱

6. 塑料铜柱 尼龙柱 六角隔离柱 塑胶铜柱 铜柱 导光板隔离柱 圆体间隔柱 PC板固定定座 固定扣 电路板隔离柱 导电隔离柱

7. 排线固定座 自粘式配线固定座 排线固定夹 压线板 电线固定座 扭线固定座 扭式固定环 扎线固定座 电源线固定座 电源线固定座插头固定扣 天线固定座 T8灯管固定座 风扇束线座 光纤固定座

8. PC板端子 接线插片端子 PC板焊接端子 接地片 圆形连接片 弹片 测试针 探针 测试点 保险丝座 保险丝盖 插式电线连接头 闭端端子 弹簧螺纹端子 压线帽 端子台 快速接线夹 跳线

9. 仪表脚垫 插销式脚垫 螺丝固定脚垫 脚垫 抗震脚垫 磁铁脚垫 橡胶脚垫 自粘脚垫 银框脚垫 金框脚垫 橡胶垫圈 橡胶华司 橡胶垫片 硅胶脚垫

10. 塑料螺丝 塑胶螺丝 翼型塑料螺丝 塑料螺帽 塑料螺帽 蝶形螺母 止付螺丝 紧定螺钉 内牙螺丝 螺丝帽盖 手转螺丝 手拧螺丝 滚花螺丝 手转螺母 手拧螺母

11. PC板拉柄 PC板耳把 PC板导槽 电路板导轨 PCB导轨槽 直立式导槽 电路板导轨

12. 晶体管盖 电晶体盖 晶体管垫片 电晶体垫片 晶体管座 电晶体座 T-O3晶体管座 石英晶体垫片 垫圈 华司 垫片 TO-220晶体管座 光电晶体座 电晶体座 IR晶体座 霍尔晶体座 硅胶帽套 功率晶体导热硅片 功率晶体压板 电源固定压条 晶体管固定弹片 五金弹片 电晶体固定弹片 晶体管夹

电子电脑塑胶五金零件目录

13.电容器垫片 垫圈 华司 电容器座 电容器帽套 电容器固定座 电容器盖 电容器护套 压敏护套 硅胶帽套

14.热敏电阻座 电阻保护座 保护电阻器 可变电阻盖

15.陶瓷零件垫片 零件垫片 垫圈 华司 零件垫座 IC座 桥式整流座 跳线座 线圈座 滤波器垫片 绝缘柱 螺丝垫片 滚轮 PC板垫片 球击缓冲垫片 尼龙垫圈 尼龙弹簧垫片 散热陶瓷垫片

16.功率IC盖 桥式整流盖 保护盖 开关盖 硅胶盖 绝缘盖 电池盖 末端套管 软质端子保护套PC端子保护套 喇叭座 拉柄箱扣 线圈固定座 DRAM固定带 十字型插件式固定器 轨道固定器

17.孔塞 扣式孔塞 扣式塞头 DVI防尘盖 螺丝孔孔塞 螺丝塞头 螺纹孔塞

18.电源线扣 电线固定夹 护线环 橡胶圈 护线圈 开口式护线环 橡胶线环 硅胶线环 硅胶护线环 天线护线环 方型护线环 U型护线环 抗震护线环 防震线环 抗震线环用插销 抗震线环用螺丝 硬盘驱动器防震座 透气压力平衡固定头 透气平衡压力固定扣

19.把手 机箱把手 仪器门拉手 纸箱把手 纸箱配件 打包扣 外箱护脚垫 纸箱外箱扣

20.阻尼齿轮 阻尼器 缓冲齿轮

21.电线扎带 电线束线带 固定带 扎线 电源线收线带 珠型扎带 水管座 扎带座 扎带扣 吊勾粘扣带 绑线带

22.USB座护盖 USB端口保护盖 USB端口防尘盖 MICRO USB防尘盖 MINI USB座护盖USB Type-C防尘盖 USB防尘盖 RJ-45防尘盖 RJ-11防尘盖 RJ-12防尘盖 RJ-22防尘盖 电源插头防尘盖 电源插头保护座 电源插头防尘座 电源插头防尘盖 光纤连接器护盖 光纤连接器护套 光纤防尘盖 PC板金手指防尘盖 HDMI防尘盖 Mini数位端子防尘盖 汽车点烟器防尘盖BBU防尘盖 DVI防尘盖 连接器盖 SIM Card Cap防尘盖 SD防尘盖 KVM防尘盖 CF防尘盖 防尘盖 端子盖 S端子盖 平衡端子盖 BNC绝缘座 SATA防尘盖 ESATA护盖 DP端子防尘盖 Mini D.P数位端子防尘盖 D.Type防尘盖 VGA防尘盖 IDE Connector防尘盖 PC端子防尘盖 端子防尘盖 1394端子防尘盖 零件盖 电源盖 机板电源保护盖 连接器座 PCMIC卡保护盖 面板 DDR防尘盖 D-Sub保护盖 高压防尘盖 SD保护盖 Micoro SD卡保护盖 SIM卡保护盖 防水帽盖 帽盖连接带 防水圈 电脑风扇防护盖 电脑风扇防尘座 电脑风扇框护垫 电脑风扇支架 开关遮板 光纤晶体座

电子电脑塑胶五金零件目录

23.插销 铆钉 尼龙铆钉 螺丝铆钉 散热片铆钉 塑料铆钉 电脑风扇铆钉 散热片扣件 弹簧铆钉 螺丝固定座 膨胀螺栓 墙塞 无帽鱼型膨胀管 墙面固定座 石膏板固定座

24.固定扣 门扣开关 机器门扣开关 弹簧固定座 旋转型门扣 门扣碰珠 磁铁门扣

55.工具 线扣工具 进口束线枪 旗型端子工具 国产束线枪 非绝缘端子工具 绝缘端子工具



电子电脑塑胶五金零件目录



1.LED间隔柱



2.LED导光柱



3.LED座



4.90°LED灯座



5.PC板间隔柱



6.塑料铜柱



7.排线固定座



8.PC板端子



9.仪表脚垫



10.塑料螺丝



11.PC板拉柄导槽



12.晶体管盖



13.电容器垫片



14.热敏电阻座



15.陶瓷零件垫片



16.功率IC盖



电子电脑塑胶五金零件目录



17.孔塞



18.电源线扣



19.机箱把手



20.阻尼齿轮



21.电线扎带



22.USB座护盖



23.尼龙铆钉



24.门扣开关



55.工具



选型手册总目录

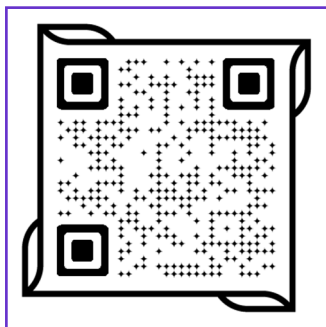
本公司保留因质量改进、后续开发或生产要求引起的设计更改权力。本产品目录为元件的详细说明，不能做担保依据。使用者有义务审核该元件是否符合应用范围的规定。



微信



QQ



网站

南京诺金电气有限公司

Nanjing Nowking Electric Co., Ltd

- ◆ Tel: 025-85422485 85436028 85437901
- ◆ Wechat/Mobile :13770725488
- ◆ QQ:260678075
- ◆ E-mail: nk@nowking.com
- ◆ Http://www.nowking.com
- ◆ Http://www.kyphe.com