

# LED导光柱 LED PIPE



用途：使LED导光于机壳面板上，使光度均匀、柔和。

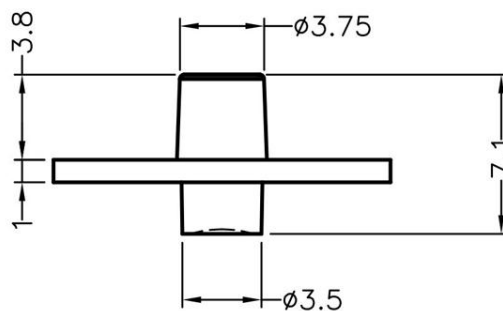
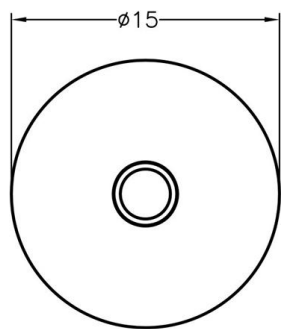
MATERIAL : PC(UL)

FLAME CLASS : 94V-0,94V-2

COLOR : TRANSPARENT

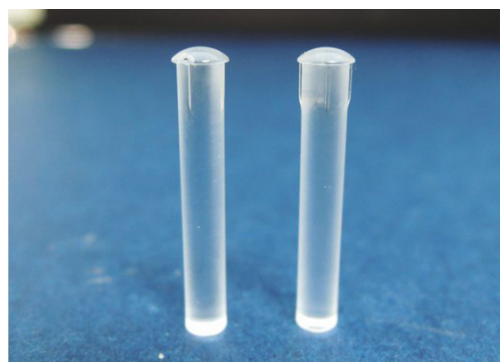
UNIT : mm

2



PART NO	PACKAGE
LEDLP-040	1000

# LED导光柱 LED PIPE



用途： 用于LED按键导光柱

MATERIAL : PC(UL)

FLAME CLASS : 94V-0,94V-2

COLOR : TRANSPARENT

UNIT : mm

HOLE IN THICKNESS  $\phi 3.0$

PART NO	A	PACKAGE
LEDLP-041	18.0	2000
LEDLP-221	7.2	1000
LEDLP-220	12.2	1000

