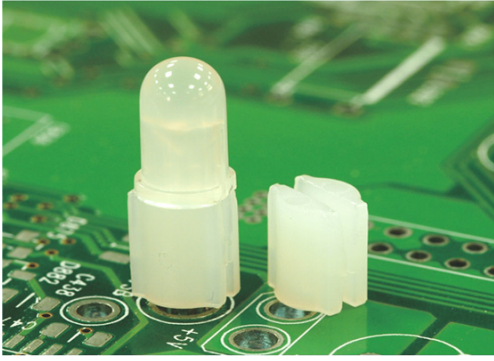


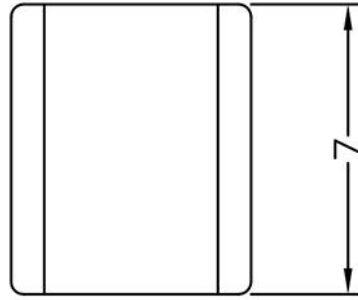
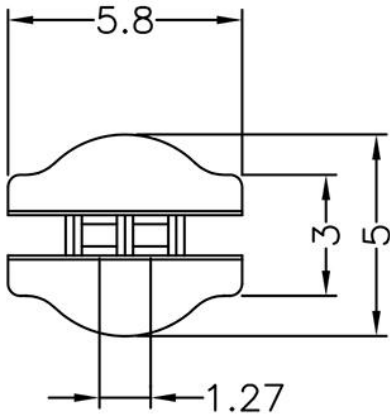
LED间隔柱 LED SPACER SUPPORT



用途：保护变色 LED4PIN固定PC板上，使接脚不会弯曲、折断、短路，并使LED高度一致。

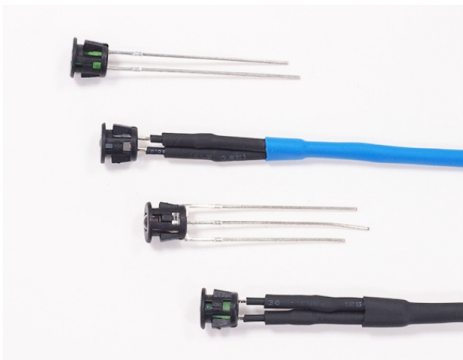
MATERIAL : NYLON 66(UL)
 FLAME CLASS : 94V-0,94V-2
 COLOR : BLACK,NATURAL
 UNIT : mm

1



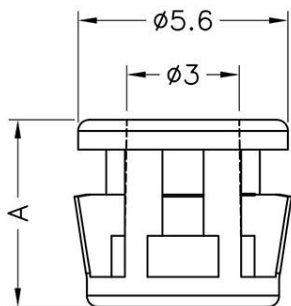
PART NO	PACKAGE
LEDSS-416	2000

LED间隔柱 LED SPACER SUPPORT



用途：可快速将LED固定于机器面板上

MATERIAL : NYLON 66(UL)
 FLAME CLASS : 94V-0,94V-2
 COLOR : BLACK,NATURAL
 UNIT : mm



PART NO	A	D	E	F	PACKAGE
LEDSS-417	5.0	∅5.2	∅5.2	1.1	1000
LEDSS-418	5.2	∅4.95	∅5.0	0.8	1000

HOLE IN CHASSIS : ∅B
 THICKNESS: T

(规格 / 尺寸) 代码说明：

- E : 装配孔
- F : 装配板厚